

28506.4

KDS-SR 1-4 BK

KDS-SR 1-4 BK



Cable entry with foamed-in seal, Mounting type: Screws, Length: 81 mm, Width: 70 mm, IP 66, Colour: Black

RAL: 9005

Business data

| | |
|--|-------------|
| Product description | Cable Entry |
| Packaging unit | 1 |
| Quantity unit | PC |
| Weight per piece (not including packaging) | 40.4 |
| Weight per piece (including packaging) | 59.4 |
| Unit of weight | G |
| Customs number | 39259020 |
| Country of origin | DE |

28506.4

KDS-SR 1-4 BK

KDS-SR 1-4 BK

Technical Data

Dimensions

| | |
|-----------------------------|---------|
| Length | 81 mm |
| Length of wall cutout | 46 mm |
| Width | 70 mm |
| Width of wall cutout | 46 mm |
| Height | 19.6 mm |
| Installation height | 19.6 mm |
| Diameter of the screw holes | 5.5 mm |

Materials

| | |
|---------------------------|-----------------------------------|
| Material | Polyamide 6.6 |
| Glass-fibre reinforced | ✓ |
| Flammability class UL 94 | V-0 |
| Working temperature, min. | -40 °C |
| Working temperature, max. | 120 °C |
| Sealing material | Polyurethane-based |
| Type of seal | Sealing and moulded flexible foam |
| Halogen-free | ✓ |
| Silicone-free | ✓ |

28506.4

KDS-SR 1-4 BK

KDS-SR 1-4 BK

Technical Data

Further technical data

| | |
|-----------------------------|--------------------------|
| Mounting type | Screws |
| Protection | IP66 |
| NEMA Type | 4x |
| Number of screw holes | 4 |
| Fixing screws | M 5 (ISO 4762 / DIN 912) |
| Torque of the fixing screws | 3 Nm |

28506.4

KDS-SR 1-4 BK

KDS-SR 1-4 BK

Approvals

cUL Recognized

| | |
|----------------|-----------------|
| cUL Recognized | C22.2 No. 14-95 |
|----------------|-----------------|

| | |
|----------------|---|
| cUL Recognized | ✓ |
|----------------|---|

UL Recognized

| | |
|---------------|--------|
| UL Recognized | UL 508 |
|---------------|--------|

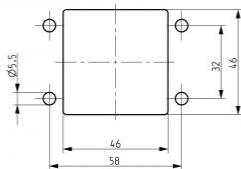
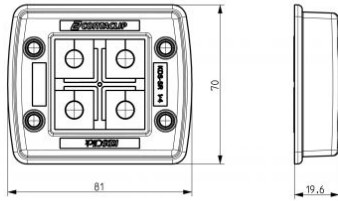
| | |
|-----------------------|---|
| UL Recognized granted | ✓ |
|-----------------------|---|

28506.4

KDS-SR 1-4 BK

KDS-SR 1-4 BK

Media



28506.4

KDS-SR 1-4 BK

KDS-SR 1-4 BK

Accessories

Inlays



Cable entry, Inlay, Mounting type: Plug in, IP 66,
Colour: Black

In general

| Order number | Article designation | GTIN (EAN) | Packaging unit |
|--------------|---------------------|---------------|----------------|
| 28516.4 | KDS-Inlay 1 | 4044211210847 | 5 PC |



Cable entry, Inlay, Mounting type: Plug in, IP 66,
Colour: Black

In general

| Order number | Article designation | GTIN (EAN) | Packaging unit |
|--------------|---------------------|---------------|----------------|
| 28517.4 | KDS-Inlay 2 | 4044211210854 | 5 PC |

28506.4

KDS-SR 1-4 BK

KDS-SR 1-4 BK

Accessories

Inlays



Cable entry, Inlay, Mounting type: Plug in, IP 66, Colour: Black

In general

| Order number | Article designation | GTIN (EAN) | Packaging unit |
|--------------|---------------------|---------------|----------------|
| 28518.4 | KDS-Inlay 4 | 4044211210861 | 5 PC |

Dichtelemente klein



Seal, Mounting type: Plug in, Length x width: 20.3 mm, Max. cable diameter: 5 mm, IP 66, Colour: Black

In general

| Order number | Article designation | GTIN (EAN) | Packaging unit |
|--------------|---------------------|---------------|----------------|
| 28555.4 | KDS-DE 2X4-5 | 4044211215620 | 10 PC |

28506.4

KDS-SR 1-4 BK

KDS-SR 1-4 BK

Accessories

Dichtelemente klein



Seal, Mounting type: Plug in, Length x width: 20.3 mm, Max. cable diameter: 10 mm, IP 66, Colour: Grey

In general

| Order number | Article designation | GTIN (EAN) | Packaging unit |
|--------------|---------------------|---------------|----------------|
| 28570.6 | KDS-DE 9-10 | 4044211211080 | 10 PC |



Seal, Mounting type: Plug in, Length x width: 20.3 mm, Max. cable diameter: 8 mm, IP 66, Colour: Grey

In general

| Order number | Article designation | GTIN (EAN) | Packaging unit |
|--------------|---------------------|---------------|----------------|
| 28692.6 | KDS-DE 2x8 | 4044211220846 | 10 PC |

28506.4

KDS-SR 1-4 BK

KDS-SR 1-4 BK

Accessories

Dichtelemente klein



Seal, Mounting type: Plug in, Length x width: 20.3 mm, Max. cable diameter: 3 mm, IP 66, Colour: Grey

In general

| Order number | Article designation | GTIN (EAN) | Packaging unit |
|--------------|---------------------|---------------|----------------|
| 28698.6 | KDS-DE 3 | 4044211220907 | 10 PC |



Seal, Mounting type: Plug in, Length x width: 20.3 mm, Max. cable diameter: 13 mm, IP 66, Colour: Black

In general

| Order number | Article designation | GTIN (EAN) | Packaging unit |
|--------------|---------------------|---------------|----------------|
| 28532.4 | KDS-DE 12-13 | 4044211210984 | 10 PC |

28506.4

KDS-SR 1-4 BK

KDS-SR 1-4 BK

Accessories

Dichtelemente klein



Seal, Mounting type: Plug in, Length x width: 20.3 mm, Max. cable diameter: 4 mm, IP 66, Colour: Black

In general

| Order number | Article designation | GTIN (EAN) | Packaging unit |
|--------------|---------------------|---------------|----------------|
| 28558.4 | KDS-DE 4X3-4 | 4044211215651 | 10 PC |



Seal, Mounting type: Plug in, Length x width: 20.3 mm, Max. cable diameter: 3 mm, IP 66, Colour: Grey

In general

| Order number | Article designation | GTIN (EAN) | Packaging unit |
|--------------|---------------------|---------------|----------------|
| 28563.6 | KDS-DE 2-3 | 4044211211011 | 10 PC |

28506.4

KDS-SR 1-4 BK

KDS-SR 1-4 BK

Accessories

Dichtelemente klein



Seal, Mounting type: Plug in, Length x width: 20.3 mm, Max. cable diameter: 5 mm, IP 66, Colour: Grey

In general

| Order number | Article designation | GTIN (EAN) | Packaging unit |
|--------------|---------------------|---------------|----------------|
| 28565.6 | KDS-DE 4-5 | 4044211211035 | 10 PC |



Seal, Mounting type: Plug in, Length x width: 20.3 mm, Max. cable diameter: 12 mm, IP 66, Colour: Grey

In general

| Order number | Article designation | GTIN (EAN) | Packaging unit |
|--------------|---------------------|---------------|----------------|
| 28572.6 | KDS-DE 11-12 | 4044211211103 | 10 PC |

28506.4

KDS-SR 1-4 BK

KDS-SR 1-4 BK

Accessories

Dichtelemente klein



Seal, Mounting type: Plug in, Length x width: 20.3 mm, Max. cable diameter: 6 mm, IP 66, Colour: Grey

In general

| Order number | Article designation | GTIN (EAN) | Packaging unit |
|--------------|---------------------|---------------|----------------|
| 28596.6 | KDS-DE 2X5-6 | 4044211215699 | 10 PC |



Seal, Mounting type: Plug in, Length x width: 20.3 mm, Max. cable diameter: 3 mm, IP 66, Colour: Grey

In general

| Order number | Article designation | GTIN (EAN) | Packaging unit |
|--------------|---------------------|---------------|----------------|
| 28597.6 | KDS-DE 4X2-3 | 4044211215705 | 10 PC |

28506.4

KDS-SR 1-4 BK

KDS-SR 1-4 BK

Accessories

Dichtelemente klein



Seal, Mounting type: Plug in, Length x width: 20.3 mm,
Max. cable diameter: 8 mm, IP 66, Colour: Black

In general

| Order number | Article designation | GTIN (EAN) | Packaging unit |
|--------------|---------------------|---------------|----------------|
| 28691.4 | KDS-DE 2x8 | 4044211220839 | 10 PC |



In general

| Order number | Article designation | GTIN (EAN) | Packaging unit |
|--------------|---------------------|------------|----------------|
| 28762.6 | KDS-DE 4X6 | | 10 PC |

28506.4

KDS-SR 1-4 BK

KDS-SR 1-4 BK

Accessories

Dichtelemente klein



In general

| Order number | Article designation | GTIN (EAN) | Packaging unit |
|--------------|---------------------|------------|----------------|
| 28763.4 | KDS-DE 4X6 | - | 10 PC |



Seal, Mounting type: Plug in, Length x width: 20.3 mm, Max. cable diameter: 7 mm, IP 66, Colour: Black

In general

| Order number | Article designation | GTIN (EAN) | Packaging unit |
|--------------|---------------------|---------------|----------------|
| 28526.4 | KDS-DE 6-7 | 4044211210922 | 10 PC |

28506.4

KDS-SR 1-4 BK

KDS-SR 1-4 BK

Accessories

Dichtelemente klein



Seal, Mounting type: Plug in, Length x width: 20.3 mm, Max. cable diameter: 9 mm, IP 66, Colour: Grey

In general

| Order number | Article designation | GTIN (EAN) | Packaging unit |
|--------------|---------------------|---------------|----------------|
| 28569.6 | KDS-DE 8-9 | 4044211211073 | 10 PC |



Seal, Mounting type: Plug in, Length x width: 20.3 mm, Max. cable diameter: 4.5 mm, IP 66, Colour: Grey

In general

| Order number | Article designation | GTIN (EAN) | Packaging unit |
|--------------|---------------------|---------------|----------------|
| 28606.6 | KDS-DE 4x4,5 | 4044211216252 | 10 PC |

28506.4

KDS-SR 1-4 BK

KDS-SR 1-4 BK

Accessories

Dichtelemente klein



Seal, Mounting type: Plug in, Length x width: 20.3 mm, Max. cable diameter: 6.5 mm, IP 66, Colour: Black

In general

| Order number | Article designation | GTIN (EAN) | Packaging unit |
|--------------|---------------------|---------------|----------------|
| 28682.4 | KDS-DE 2x6,5 | 4044211219536 | 10 PC |



Seal, Mounting type: Plug in, Length x width: 20.3 mm, Max. cable diameter: 6 mm, IP 66, Colour: Grey

In general

| Order number | Article designation | GTIN (EAN) | Packaging unit |
|--------------|---------------------|---------------|----------------|
| 28688.6 | KDS-DE 3x5-6 | 4044211220518 | 10 PC |

28506.4

KDS-SR 1-4 BK

KDS-SR 1-4 BK

Accessories

Dichtelemente klein



Seal, Mounting type: Plug in, Length x width: 20.3 mm,
Max. cable diameter: 7 mm, IP 66, Colour: Black

In general

| Order number | Article designation | GTIN (EAN) | Packaging unit |
|--------------|---------------------|---------------|----------------|
| 28689.4 | KDS-DE 2x7 | 4044211220815 | 10 PC |



Seal, Mounting type: Plug in, Length x width: 20.3 mm,
Max. cable diameter: 1.5 mm, IP 66, Colour: Black

In general

| Order number | Article designation | GTIN (EAN) | Packaging unit |
|--------------|---------------------|---------------|----------------|
| 28693.4 | KDS-DE 1,5 | 4044211220853 | 10 PC |

28506.4

KDS-SR 1-4 BK

KDS-SR 1-4 BK

Accessories

Dichtelemente klein



Seal, Mounting type: Plug in, Length x width: 20.3 mm,
Max. cable diameter: 2 mm, IP 66, Colour: Black

In general

| Order number | Article designation | GTIN (EAN) | Packaging unit |
|--------------|---------------------|---------------|----------------|
| 28695.4 | KDS-DE 2 | 4044211220877 | 10 PC |



Seal, Mounting type: Plug in, Length x width: 20.3 mm,
Max. cable diameter: 2 mm, IP 66, Colour: Grey

In general

| Order number | Article designation | GTIN (EAN) | Packaging unit |
|--------------|---------------------|---------------|----------------|
| 28696.6 | KDS-DE 2 | 4044211220884 | 10 PC |

28506.4

KDS-SR 1-4 BK

KDS-SR 1-4 BK

Accessories

Dichtelemente klein



Seal, Mounting type: Plug in, Length x width: 20.3 mm,
Max. cable diameter: 3 mm, IP 66, Colour: Black

In general

| Order number | Article designation | GTIN (EAN) | Packaging unit |
|--------------|---------------------|---------------|----------------|
| 28697.4 | KDS-DE 3 | 4044211220891 | 10 PC |



Seal, Mounting type: Plug in, Length x width: 20.3 mm,
Max. cable diameter: 14 mm, IP 66, Colour: Black

In general

| Order number | Article designation | GTIN (EAN) | Packaging unit |
|--------------|---------------------|---------------|----------------|
| 28533.4 | KDS-DE 13-14 | 4044211210991 | 10 PC |

28506.4

KDS-SR 1-4 BK

KDS-SR 1-4 BK

Accessories

Dichtelemente klein



Seal, Mounting type: Plug in, Length x width: 20.3 mm, Max. cable diameter: 6 mm, IP 66, Colour: Black

In general

| Order number | Article designation | GTIN (EAN) | Packaging unit |
|--------------|---------------------|---------------|----------------|
| 28556.4 | KDS-DE 2X5-6 | 4044211215637 | 10 PC |



Seal, Mounting type: Plug in, Length x width: 20.3 mm, Max. cable diameter: 2 mm, IP 66, Colour: Grey

In general

| Order number | Article designation | GTIN (EAN) | Packaging unit |
|--------------|---------------------|---------------|----------------|
| 28562.6 | KDS-DE 1,5-2 | 4044211209988 | 10 PC |

28506.4

KDS-SR 1-4 BK

KDS-SR 1-4 BK

Accessories

Dichtelemente klein



Seal, Mounting type: Plug in, Length x width: 20.3 mm,
Max. cable diameter: 7 mm, IP 66, Colour: Grey

In general

| Order number | Article designation | GTIN (EAN) | Packaging unit |
|--------------|---------------------|---------------|----------------|
| 28567.6 | KDS-DE 6-7 | 4044211211059 | 10 PC |



Seal, Mounting type: Plug in, Length x width: 20.3 mm,
Max. cable diameter: 11 mm, IP 66, Colour: Grey

In general

| Order number | Article designation | GTIN (EAN) | Packaging unit |
|--------------|---------------------|---------------|----------------|
| 28571.6 | KDS-DE 10-11 | 4044211211097 | 10 PC |

28506.4

KDS-SR 1-4 BK

KDS-SR 1-4 BK

Accessories

Dichtelemente klein



Seal, Mounting type: Plug in, Length x width: 20.3 mm, Max. cable diameter: 14 mm, IP 66, Colour: Grey

In general

| Order number | Article designation | GTIN (EAN) | Packaging unit |
|--------------|---------------------|---------------|----------------|
| 28574.6 | KDS-DE 13-14 | 4044211215231 | 10 PC |



Seal, Mounting type: Plug in, Length x width: 20.3 mm, Max. cable diameter: 5 mm, IP 66, Colour: Grey

In general

| Order number | Article designation | GTIN (EAN) | Packaging unit |
|--------------|---------------------|---------------|----------------|
| 28595.6 | KDS-DE 2X4-5 | 4044211215682 | 10 PC |

28506.4

KDS-SR 1-4 BK

KDS-SR 1-4 BK

Accessories

Dichtelemente klein



Seal, Mounting type: Plug in, Length x width: 20.3 mm, Max. cable diameter: 4 mm, IP 66, Colour: Grey

In general

| Order number | Article designation | GTIN (EAN) | Packaging unit |
|--------------|---------------------|---------------|----------------|
| 28598.6 | KDS-DE 4X3-4 | 4044211215712 | 10 PC |



Seal, Mounting type: Plug in, Length x width: 20.3 mm, Max. cable diameter: 15 mm, IP 66, Colour: Grey

In general

| Order number | Article designation | GTIN (EAN) | Packaging unit |
|--------------|---------------------|---------------|----------------|
| 28609.6 | KDS-DE 14-15 | 4044211219307 | 10 PC |

28506.4

KDS-SR 1-4 BK

KDS-SR 1-4 BK

Accessories

Dichtelemente klein



Seal, Mounting type: Plug in, Length x width: 20.3 mm,
Max. cable diameter: 1.5 mm, IP 66, Colour: Grey

In general

| Order number | Article designation | GTIN (EAN) | Packaging unit |
|--------------|---------------------|---------------|----------------|
| 28694.6 | KDS-DE 1,5 | 4044211220860 | 10 PC |



Seal, Mounting type: Plug in, Length x width: 20.3 mm,
Max. cable diameter: 2 mm, IP 66, Colour: Black

In general

| Order number | Article designation | GTIN (EAN) | Packaging unit |
|--------------|---------------------|---------------|----------------|
| 28521.4 | KDS-DE 1,5-2 | 4044211210007 | 10 PC |

28506.4

KDS-SR 1-4 BK

KDS-SR 1-4 BK

Accessories

Dichtelemente klein



Seal, Mounting type: Plug in, Length x width: 20.3 mm, Max. cable diameter: 10 mm, IP 66, Colour: Black

In general

| Order number | Article designation | GTIN (EAN) | Packaging unit |
|--------------|---------------------|---------------|----------------|
| 28529.4 | KDS-DE 9-10 | 4044211210953 | 10 PC |



Seal, Mounting type: Plug in, Length x width: 20.3 mm, Max. cable diameter: 13 mm, IP 66, Colour: Grey

In general

| Order number | Article designation | GTIN (EAN) | Packaging unit |
|--------------|---------------------|---------------|----------------|
| 28573.6 | KDS-DE 12-13 | 4044211215224 | 10 PC |

28506.4

KDS-SR 1-4 BK

KDS-SR 1-4 BK

Accessories

Dichtelemente klein



Seal, Mounting type: Plug in, Length x width: 20.3 mm,
Max. cable diameter: 15 mm, IP 66, Colour: Black

In general

| Order number | Article designation | GTIN (EAN) | Packaging unit |
|--------------|---------------------|---------------|----------------|
| 28608.4 | KDS-DE 14-15 | 4044211219314 | 10 PC |



Seal, Mounting type: Plug in, Length x width: 20.3 mm,
Max. cable diameter: 16 mm, IP 66, Colour: Black

In general

| Order number | Article designation | GTIN (EAN) | Packaging unit |
|--------------|---------------------|---------------|----------------|
| 28670.4 | KDS-DE 15-16 | 4044211219321 | 10 PC |

28506.4

KDS-SR 1-4 BK

KDS-SR 1-4 BK

Accessories

Dichtelemente klein



Seal, Mounting type: Plug in, Length x width: 20.3 mm, Max. cable diameter: 17 mm, IP 66, Colour: Grey

In general

| Order number | Article designation | GTIN (EAN) | Packaging unit |
|--------------|---------------------|---------------|----------------|
| 28671.6 | KDS-DE 15-16 | 4044211219338 | 10 PC |



Seal, Mounting type: Plug in, Length x width: 20.3 mm, Max. cable diameter: 5 mm, IP 66, Colour: Black

In general

| Order number | Article designation | GTIN (EAN) | Packaging unit |
|--------------|---------------------|---------------|----------------|
| 28672.4 | KDS-DE 4X5 | 4044211219345 | 10 PC |

28506.4

KDS-SR 1-4 BK

KDS-SR 1-4 BK

Accessories

Dichtelemente klein



Seal, Mounting type: Plug in, Length x width: 20.3 mm, Max. cable diameter: 5 mm, IP 66, Colour: Grey

In general

| Order number | Article designation | GTIN (EAN) | Packaging unit |
|--------------|---------------------|---------------|----------------|
| 28673.6 | KDS-DE 4X5 | 4044211219352 | 10 PC |



Seal, Mounting type: Plug in, Length x width: 20.3 mm, Max. cable diameter: 4.5 mm, IP 66, Colour: Black

In general

| Order number | Article designation | GTIN (EAN) | Packaging unit |
|--------------|---------------------|---------------|----------------|
| 28681.4 | KDS-DE 4x4,5 | 4044211219543 | 10 PC |

28506.4

KDS-SR 1-4 BK

KDS-SR 1-4 BK

Accessories

Dichtelemente klein



Seal, Mounting type: Plug in, Length x width: 20.3 mm, Max. cable diameter: 6.5 mm, IP 66, Colour: Black

In general

| Order number | Article designation | GTIN (EAN) | Packaging unit |
|--------------|---------------------|---------------|----------------|
| 28687.4 | KDS-DE 3x5-6 | 4044211220501 | 10 PC |



Seal dummy, Mounting type: Plug in, Length x width: 20.3 mm, IP 66, Colour: Black

In general

| Order number | Article designation | GTIN (EAN) | Packaging unit |
|--------------|---------------------|---------------|----------------|
| 28520.4 | KDS-DE/B | 4044211210878 | 10 PC |

28506.4

KDS-SR 1-4 BK

KDS-SR 1-4 BK

Accessories

Dichtelemente klein



Seal, Mounting type: Plug in, Length x width: 20.3 mm,
Max. cable diameter: 6 mm, IP 66, Colour: Black

In general

| Order number | Article designation | GTIN (EAN) | Packaging unit |
|--------------|---------------------|---------------|----------------|
| 28525.4 | KDS-DE 5-6 | 4044211210915 | 10 PC |



Seal, Mounting type: Plug in, Length x width: 20.3 mm,
Max. cable diameter: 9 mm, IP 66, Colour: Black

In general

| Order number | Article designation | GTIN (EAN) | Packaging unit |
|--------------|---------------------|---------------|----------------|
| 28528.4 | KDS-DE 8-9 | 4044211210946 | 10 PC |

28506.4

KDS-SR 1-4 BK

KDS-SR 1-4 BK

Accessories

Dichtelemente klein



Seal, Mounting type: Plug in, Length x width: 20.3 mm,
Max. cable diameter: 11 mm, IP 66, Colour: Black

In general

| Order number | Article designation | GTIN (EAN) | Packaging unit |
|--------------|---------------------|---------------|----------------|
| 28530.4 | KDS-DE 10-11 | 4044211210960 | 10 PC |



Seal, Mounting type: Plug in, Length x width: 20.3 mm,
Max. cable diameter: 15 mm, IP 66, Colour: Black

In general

| Order number | Article designation | GTIN (EAN) | Packaging unit |
|--------------|---------------------|---------------|----------------|
| 28553.4 | KDS-DE/K 2-15 | 4044211216092 | 10 PC |

28506.4

KDS-SR 1-4 BK

KDS-SR 1-4 BK

Accessories

Dichtelemente klein



Seal, Mounting type: Plug in, Length x width: 20.3 mm, Max. cable diameter: 3 mm, IP 66, Colour: Black

In general

| Order number | Article designation | GTIN (EAN) | Packaging unit |
|--------------|---------------------|---------------|----------------|
| 28557.4 | KDS-DE 4X2-3 | 4044211215644 | 10 PC |



Seal, Mounting type: Plug in, Length x width: 20.3 mm, IP 66, Colour: Black

In general

| Order number | Article designation | GTIN (EAN) | Packaging unit |
|--------------|---------------------|---------------|----------------|
| 28560.4 | KDS-DE/2XASI | 4044211215675 | 10 PC |

28506.4

KDS-SR 1-4 BK

KDS-SR 1-4 BK

Accessories

Dichtelemente klein



Seal, Mounting type: Plug in, Length x width: 20.3 mm, Max. cable diameter: 4 mm, IP 66, Colour: Grey

In general

| Order number | Article designation | GTIN (EAN) | Packaging unit |
|--------------|---------------------|---------------|----------------|
| 28564.6 | KDS-DE 3-4 | 4044211211028 | 10 PC |



Seal, Mounting type: Plug in, Length x width: 20.3 mm, Max. cable diameter: 8 mm, IP 66, Colour: Grey

In general

| Order number | Article designation | GTIN (EAN) | Packaging unit |
|--------------|---------------------|---------------|----------------|
| 28568.6 | KDS-DE 7-8 | 4044211211066 | 10 PC |

28506.4

KDS-SR 1-4 BK

KDS-SR 1-4 BK

Accessories

Dichtelemente klein



Seal, Mounting type: Plug in, Length x width: 20.3 mm, IP 66, Colour: Grey

In general

| Order number | Article designation | GTIN (EAN) | Packaging unit |
|--------------|---------------------|---------------|----------------|
| 28600.6 | KDS-DE/2XASI | 4044211215736 | 10 PC |



Seal, Mounting type: Plug in, Length x width: 20.3 mm, Max. cable diameter: 3 mm, IP 66, Colour: Black

In general

| Order number | Article designation | GTIN (EAN) | Packaging unit |
|--------------|---------------------|---------------|----------------|
| 28522.4 | KDS-DE 2-3 | 4044211210885 | 10 PC |

28506.4

KDS-SR 1-4 BK

KDS-SR 1-4 BK

Accessories

Dichtelemente klein



Seal, Mounting type: Plug in, Length x width: 20.3 mm,
Max. cable diameter: 4 mm, IP 66, Colour: Black

In general

| Order number | Article designation | GTIN (EAN) | Packaging unit |
|--------------|---------------------|---------------|----------------|
| 28523.4 | KDS-DE 3-4 | 4044211210892 | 10 PC |



Seal, Mounting type: Plug in, Length x width: 20.3 mm,
Max. cable diameter: 5 mm, IP 66, Colour: Black

In general

| Order number | Article designation | GTIN (EAN) | Packaging unit |
|--------------|---------------------|---------------|----------------|
| 28524.4 | KDS-DE 4-5 | 4044211210908 | 10 PC |

28506.4

KDS-SR 1-4 BK

KDS-SR 1-4 BK

Accessories

Dichtelemente klein



Seal, Mounting type: Plug in, Length x width: 20.3 mm, Max. cable diameter: 12 mm, IP 66, Colour: Black

In general

| Order number | Article designation | GTIN (EAN) | Packaging unit |
|--------------|---------------------|---------------|----------------|
| 28531.4 | KDS-DE 11-12 | 4044211210977 | 10 PC |



Seal, Mounting type: Plug in, Length x width: 20.3 mm, IP 66, Colour: Black

In general

| Order number | Article designation | GTIN (EAN) | Packaging unit |
|--------------|---------------------|---------------|----------------|
| 28559.4 | KDS-DE/1XASI | 4044211215668 | 10 PC |

28506.4

KDS-SR 1-4 BK

KDS-SR 1-4 BK

Accessories

Dichtelemente klein



Seal dummy, Mounting type: Plug in, Length x width: 20.3 mm, IP 66, Colour: Grey

In general

| Order number | Article designation | GTIN (EAN) | Packaging unit |
|--------------|---------------------|---------------|----------------|
| 28561.6 | KDS-DE/B | 4044211211004 | 10 PC |



Seal, Mounting type: Plug in, Length x width: 20.3 mm, Max. cable diameter: 6 mm, IP 66, Colour: Grey

In general

| Order number | Article designation | GTIN (EAN) | Packaging unit |
|--------------|---------------------|---------------|----------------|
| 28566.6 | KDS-DE 5-6 | 4044211211042 | 10 PC |

28506.4

KDS-SR 1-4 BK

KDS-SR 1-4 BK

Accessories

Dichtelemente klein



Seal, Mounting type: Plug in, Length x width: 20.3 mm, Max. cable diameter: 6.5 mm, IP 66, Colour: Grey

In general

| Order number | Article designation | GTIN (EAN) | Packaging unit |
|--------------|---------------------|---------------|----------------|
| 28607.6 | KDS-DE 2x6,5 | 4044211216238 | 10 PC |



Seal, Mounting type: Plug in, Length x width: 20.3 mm, Max. cable diameter: 7 mm, IP 66, Colour: Grey

In general

| Order number | Article designation | GTIN (EAN) | Packaging unit |
|--------------|---------------------|---------------|----------------|
| 28690.6 | KDS-DE 2x7 | 4044211220822 | 10 PC |

28506.4

KDS-SR 1-4 BK

KDS-SR 1-4 BK

Accessories

Dichtelemente klein



Seal, Mounting type: Plug in, Length x width: 20.3 mm,
Max. cable diameter: 8 mm, IP 66, Colour: Black

In general

| Order number | Article designation | GTIN (EAN) | Packaging unit |
|--------------|---------------------|---------------|----------------|
| 28527.4 | KDS-DE 7-8 | 4044211210939 | 10 PC |

Dichtelemente groß



Seal, Mounting type: Plug in, Length x width: 42.8 mm,
Max. cable diameter: 15 mm, IP 66, Colour: Black

In general

| Order number | Article designation | GTIN (EAN) | Packaging unit |
|--------------|---------------------|---------------|----------------|
| 28535.4 | KDS-DEG 14-15 | 4044211209995 | 10 PC |

28506.4

KDS-SR 1-4 BK

KDS-SR 1-4 BK

Accessories

Dichtelemente groß



Seal, Mounting type: Plug in, Length x width: 42.8 mm,
Max. cable diameter: 21 mm, IP 66, Colour: Black

In general

| Order number | Article designation | GTIN (EAN) | Packaging unit |
|--------------|---------------------|---------------|----------------|
| 28541.4 | KDS-DEG 20-21 | 4044211215378 | 10 PC |



Seal, Mounting type: Plug in, Length x width: 42.8 mm,
Max. cable diameter: 23 mm, IP 66, Colour: Black

In general

| Order number | Article designation | GTIN (EAN) | Packaging unit |
|--------------|---------------------|---------------|----------------|
| 28543.4 | KDS-DEG 22-23 | 4044211215415 | 10 PC |

28506.4

KDS-SR 1-4 BK

KDS-SR 1-4 BK

Accessories

Dichtelemente groß



Seal, Mounting type: Plug in, Length x width: 42.8 mm, Max. cable diameter: 32 mm, IP 66, Colour: Black

In general

| Order number | Article designation | GTIN (EAN) | Packaging unit |
|--------------|---------------------|---------------|----------------|
| 28552.4 | KDS-DEG 31-32 | 4044211215590 | 10 PC |



Seal, Mounting type: Plug in, Length x width: 42.8 mm, Max. cable diameter: 19 mm, IP 66, Colour: Grey

In general

| Order number | Article designation | GTIN (EAN) | Packaging unit |
|--------------|---------------------|---------------|----------------|
| 28580.6 | KDS-DEG 18-19 | 4044211215323 | 10 PC |

28506.4

KDS-SR 1-4 BK

KDS-SR 1-4 BK

Accessories

Dichtelemente groß



Seal, Mounting type: Plug in, Length x width: 42.8 mm,
Max. cable diameter: 20 mm, IP 66, Colour: Grey

In general

| Order number | Article designation | GTIN (EAN) | Packaging unit |
|--------------|---------------------|---------------|----------------|
| 28581.6 | KDS-DEG 19-20 | 4044211215347 | 10 PC |



Seal, Mounting type: Plug in, Length x width: 42.8 mm,
Max. cable diameter: 21 mm, IP 66, Colour: Grey

In general

| Order number | Article designation | GTIN (EAN) | Packaging unit |
|--------------|---------------------|---------------|----------------|
| 28582.6 | KDS-DEG 20-21 | 4044211215361 | 10 PC |

28506.4

KDS-SR 1-4 BK

KDS-SR 1-4 BK

Accessories

Dichtelemente groß



Seal, Mounting type: Plug in, Length x width: 42.8 mm,
Max. cable diameter: 29 mm, IP 66, Colour: Grey

In general

| Order number | Article designation | GTIN (EAN) | Packaging unit |
|--------------|---------------------|---------------|----------------|
| 28590.6 | KDS-DEG 28-29 | 4044211215521 | 10 PC |



Seal, Mounting type: Plug in, Length x width: 42.8 mm,
Max. cable diameter: 32 mm, IP 66, Colour: Grey

In general

| Order number | Article designation | GTIN (EAN) | Packaging unit |
|--------------|---------------------|---------------|----------------|
| 28593.6 | KDS-DEG 31-32 | 4044211215583 | 10 PC |

28506.4

KDS-SR 1-4 BK

KDS-SR 1-4 BK

Accessories

Dichtelemente groß



Seal dummy, Mounting type: Plug in, Length x width: 42.8 mm, IP 66, Colour: Black

In general

| Order number | Article designation | GTIN (EAN) | Packaging unit |
|--------------|---------------------|---------------|----------------|
| 28534.4 | KDS-DEG/B | 4044211215255 | 10 PC |



Seal, Mounting type: Plug in, Length x width: 42.8 mm, Max. cable diameter: 16 mm, IP 66, Colour: Black

In general

| Order number | Article designation | GTIN (EAN) | Packaging unit |
|--------------|---------------------|---------------|----------------|
| 28536.4 | KDS-DEG 15-16 | 4044211215279 | 10 PC |

28506.4

KDS-SR 1-4 BK

KDS-SR 1-4 BK

Accessories

Dichtelemente groß



Seal, Mounting type: Plug in, Length x width: 42.8 mm,
Max. cable diameter: 20 mm, IP 66, Colour: Black

In general

| Order number | Article designation | GTIN (EAN) | Packaging unit |
|--------------|---------------------|---------------|----------------|
| 28540.4 | KDS-DEG 19-20 | 4044211215354 | 10 PC |



Seal, Mounting type: Plug in, Length x width: 42.8 mm,
Max. cable diameter: 27 mm, IP 66, Colour: Black

In general

| Order number | Article designation | GTIN (EAN) | Packaging unit |
|--------------|---------------------|---------------|----------------|
| 28547.4 | KDS-DEG 26-27 | 4044211215491 | 10 PC |

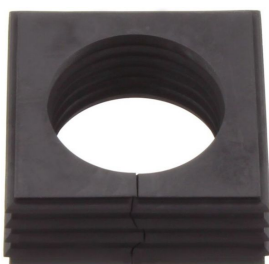
28506.4

KDS-SR 1-4 BK

KDS-SR 1-4 BK

Accessories

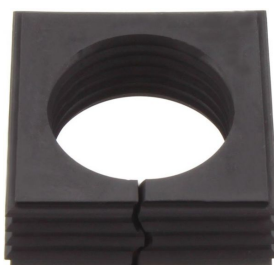
Dichtelemente groß



Seal, Mounting type: Plug in, Length x width: 42.8 mm, Max. cable diameter: 30 mm, IP 66, Colour: Black

In general

| Order number | Article designation | GTIN (EAN) | Packaging unit |
|--------------|---------------------|---------------|----------------|
| 28550.4 | KDS-DEG 29-30 | 4044211215552 | 10 PC |



Seal, Mounting type: Plug in, Length x width: 42.8 mm, Max. cable diameter: 31 mm, IP 66, Colour: Black

In general

| Order number | Article designation | GTIN (EAN) | Packaging unit |
|--------------|---------------------|---------------|----------------|
| 28551.4 | KDS-DEG 30-31 | 4044211215576 | 10 PC |

28506.4

KDS-SR 1-4 BK

KDS-SR 1-4 BK

Accessories

Dichtelemente groß



Seal, Mounting type: Plug in, Length x width: 42.8 mm,
Max. cable diameter: 17 mm, IP 66, Colour: Grey

In general

| Order number | Article designation | GTIN (EAN) | Packaging unit |
|--------------|---------------------|---------------|----------------|
| 28578.6 | KDS-DEG 16-17 | 4044211215286 | 10 PC |



Seal, Mounting type: Plug in, Length x width: 42.8 mm,
Max. cable diameter: 18 mm, IP 66, Colour: Grey

In general

| Order number | Article designation | GTIN (EAN) | Packaging unit |
|--------------|---------------------|---------------|----------------|
| 28579.6 | KDS-DEG 17-18 | 4044211215309 | 10 PC |

28506.4

KDS-SR 1-4 BK

KDS-SR 1-4 BK

Accessories

Dichtelemente groß



Seal, Mounting type: Plug in, Length x width: 42.8 mm,
Max. cable diameter: 23 mm, IP 66, Colour: Grey

In general

| Order number | Article designation | GTIN (EAN) | Packaging unit |
|--------------|---------------------|---------------|----------------|
| 28584.6 | KDS-DEG 22-23 | 4044211215408 | 10 PC |



Seal, Mounting type: Plug in, Length x width: 42.8 mm,
Max. cable diameter: 31 mm, IP 66, Colour: Grey

In general

| Order number | Article designation | GTIN (EAN) | Packaging unit |
|--------------|---------------------|---------------|----------------|
| 28592.6 | KDS-DEG 30-31 | 4044211215569 | 10 PC |

28506.4

KDS-SR 1-4 BK

KDS-SR 1-4 BK

Accessories

Dichtelemente groß



Seal, Mounting type: Plug in, Length x width: 42.8 mm, Max. cable diameter: 17 mm, IP 66, Colour: Black

In general

| Order number | Article designation | GTIN (EAN) | Packaging unit |
|--------------|---------------------|---------------|----------------|
| 28537.4 | KDS-DEG 16-17 | 4044211215293 | 10 PC |



Seal, Mounting type: Plug in, Length x width: 42.8 mm, Max. cable diameter: 24 mm, IP 66, Colour: Black

In general

| Order number | Article designation | GTIN (EAN) | Packaging unit |
|--------------|---------------------|---------------|----------------|
| 28544.4 | KDS-DEG 23-24 | 4044211215439 | 10 PC |

28506.4

KDS-SR 1-4 BK

KDS-SR 1-4 BK

Accessories

Dichtelemente groß



Seal, Mounting type: Plug in, Length x width: 42.8 mm,
Max. cable diameter: 26 mm, IP 66, Colour: Black

In general

| Order number | Article designation | GTIN (EAN) | Packaging unit |
|--------------|---------------------|---------------|----------------|
| 28546.4 | KDS-DEG 25-26 | 4044211215460 | 10 PC |



Seal, Mounting type: Plug in, Length x width: 42.8 mm,
Max. cable diameter: 34 mm, IP 66, Colour: Black

In general

| Order number | Article designation | GTIN (EAN) | Packaging unit |
|--------------|---------------------|---------------|----------------|
| 28554.4 | KDS-DEG/K 15-34 | 4044211216108 | 10 PC |

28506.4

KDS-SR 1-4 BK

KDS-SR 1-4 BK

Accessories

Dichtelemente groß



Seal dummy, Mounting type: Plug in, Length x width: 42.8 mm, IP 66, Colour: Grey

In general

| Order number | Article designation | GTIN (EAN) | Packaging unit |
|--------------|---------------------|---------------|----------------|
| 28575.6 | KDS-DEG/B | 4044211215248 | 10 PC |



Seal, Mounting type: Plug in, Length x width: 42.8 mm, Max. cable diameter: 15 mm, IP 66, Colour: Grey

In general

| Order number | Article designation | GTIN (EAN) | Packaging unit |
|--------------|---------------------|---------------|----------------|
| 28576.6 | KDS-DEG 14-15 | 4044211209971 | 10 PC |

28506.4

KDS-SR 1-4 BK

KDS-SR 1-4 BK

Accessories

Dichtelemente groß



Seal, Mounting type: Plug in, Length x width: 42.8 mm,
Max. cable diameter: 25 mm, IP 66, Colour: Grey

In general

| Order number | Article designation | GTIN (EAN) | Packaging unit |
|--------------|---------------------|---------------|----------------|
| 28586.6 | KDS-DEG 24-25 | 4044211215446 | 10 PC |



Seal, Mounting type: Plug in, Length x width: 42.8 mm,
Max. cable diameter: 27 mm, IP 66, Colour: Grey

In general

| Order number | Article designation | GTIN (EAN) | Packaging unit |
|--------------|---------------------|---------------|----------------|
| 28588.6 | KDS-DEG 26-27 | 4044211215484 | 10 PC |

28506.4

KDS-SR 1-4 BK

KDS-SR 1-4 BK

Accessories

Dichtelemente groß



Seal, Mounting type: Plug in, Length x width: 42.8 mm, Max. cable diameter: 33 mm, IP 66, Colour: Black

In general

| Order number | Article designation | GTIN (EAN) | Packaging unit |
|--------------|---------------------|---------------|----------------|
| 28730.4 | KDS-DEG 33-34 | 4044211220969 | 10 PC |



Seal, Mounting type: Plug in, Length x width: 42.8 mm, Max. cable diameter: 33 mm, IP 66, Colour: Black

In general

| Order number | Article designation | GTIN (EAN) | Packaging unit |
|--------------|---------------------|---------------|----------------|
| 28732.4 | KDS-DEG 34-35 | 4044211220983 | 10 PC |

28506.4

KDS-SR 1-4 BK

KDS-SR 1-4 BK

Accessories

Dichtelemente groß



Seal, Mounting type: Plug in, Length x width: 42.8 mm, Max. cable diameter: 18 mm, IP 66, Colour: Black

In general

| Order number | Article designation | GTIN (EAN) | Packaging unit |
|--------------|---------------------|---------------|----------------|
| 28538.4 | KDS-DEG 17-18 | 4044211215316 | 10 PC |



Seal, Mounting type: Plug in, Length x width: 42.8 mm, Max. cable diameter: 19 mm, IP 66, Colour: Black

In general

| Order number | Article designation | GTIN (EAN) | Packaging unit |
|--------------|---------------------|---------------|----------------|
| 28539.4 | KDS-DEG 18-19 | 4044211215330 | 10 PC |

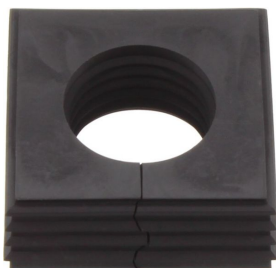
28506.4

KDS-SR 1-4 BK

KDS-SR 1-4 BK

Accessories

Dichtelemente groß



Seal, Mounting type: Plug in, Length x width: 42.8 mm, Max. cable diameter: 25 mm, IP 66, Colour: Black

In general

| Order number | Article designation | GTIN (EAN) | Packaging unit |
|--------------|---------------------|---------------|----------------|
| 28545.4 | KDS-DEG 24-25 | 4044211215453 | 10 PC |



Seal, Mounting type: Plug in, Length x width: 42.8 mm, Max. cable diameter: 29 mm, IP 66, Colour: Black

In general

| Order number | Article designation | GTIN (EAN) | Packaging unit |
|--------------|---------------------|---------------|----------------|
| 28549.4 | KDS-DEG 28-29 | 4044211215538 | 10 PC |

28506.4

KDS-SR 1-4 BK

KDS-SR 1-4 BK

Accessories

Dichtelemente groß



Seal, Mounting type: Plug in, Length x width: 42.8 mm, Max. cable diameter: 16 mm, IP 66, Colour: Grey

In general

| Order number | Article designation | GTIN (EAN) | Packaging unit |
|--------------|---------------------|---------------|----------------|
| 28577.6 | KDS-DEG 15-16 | 4044211215262 | 10 PC |



Seal, Mounting type: Plug in, Length x width: 42.8 mm, Max. cable diameter: 24 mm, IP 66, Colour: Grey

In general

| Order number | Article designation | GTIN (EAN) | Packaging unit |
|--------------|---------------------|---------------|----------------|
| 28585.6 | KDS-DEG 23-24 | 4044211215422 | 10 PC |

28506.4

KDS-SR 1-4 BK

KDS-SR 1-4 BK

Accessories

Dichtelemente groß



Seal, Mounting type: Plug in, Length x width: 42.8 mm, Max. cable diameter: 26 mm, IP 66, Colour: Grey

In general

| Order number | Article designation | GTIN (EAN) | Packaging unit |
|--------------|---------------------|---------------|----------------|
| 28587.6 | KDS-DEG 25-26 | 4044211215477 | 10 PC |



Seal, Mounting type: Plug in, Length x width: 42.8 mm, Max. cable diameter: 30 mm, IP 66, Colour: Grey

In general

| Order number | Article designation | GTIN (EAN) | Packaging unit |
|--------------|---------------------|---------------|----------------|
| 28591.6 | KDS-DEG 29-30 | 4044211215545 | 10 PC |

28506.4

KDS-SR 1-4 BK

KDS-SR 1-4 BK

Accessories

Dichtelemente groß



Seal, Mounting type: Plug in, Length x width: 42.8 mm, Max. cable diameter: 33 mm, IP 66, Colour: Grey

In general

| Order number | Article designation | GTIN (EAN) | Packaging unit |
|--------------|---------------------|---------------|----------------|
| 28594.6 | KDS-DEG 32-33 | 4044211215606 | 10 PC |



In general

| Order number | Article designation | GTIN (EAN) | Packaging unit |
|--------------|---------------------|---------------|----------------|
| 28731.6 | KDS-DEG 33-34 | 4044211220976 | 10 PC |

28506.4

KDS-SR 1-4 BK

KDS-SR 1-4 BK

Accessories

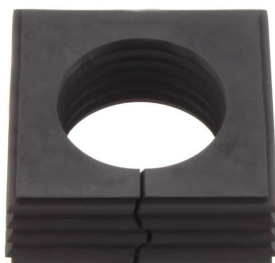
Dichtelemente groß



Seal, Mounting type: Plug in, Length x width: 42.8 mm, Max. cable diameter: 22 mm, IP 66, Colour: Black

In general

| Order number | Article designation | GTIN (EAN) | Packaging unit |
|--------------|---------------------|---------------|----------------|
| 28542.4 | KDS-DEG 21-22 | 4044211215392 | 10 PC |



Seal, Mounting type: Plug in, Length x width: 42.8 mm, Max. cable diameter: 28 mm, IP 66, Colour: Black

In general

| Order number | Article designation | GTIN (EAN) | Packaging unit |
|--------------|---------------------|---------------|----------------|
| 28548.4 | KDS-DEG 27-28 | 4044211215514 | 10 PC |

28506.4

KDS-SR 1-4 BK

KDS-SR 1-4 BK

Accessories

Dichtelemente groß



Seal, Mounting type: Plug in, Length x width: 42.8 mm, Max. cable diameter: 22 mm, IP 66, Colour: Grey

In general

| Order number | Article designation | GTIN (EAN) | Packaging unit |
|--------------|---------------------|---------------|----------------|
| 28583.6 | KDS-DEG 21-22 | 4044211215385 | 10 PC |



Seal, Mounting type: Plug in, Length x width: 42.8 mm, Max. cable diameter: 28 mm, IP 66, Colour: Grey

In general

| Order number | Article designation | GTIN (EAN) | Packaging unit |
|--------------|---------------------|---------------|----------------|
| 28589.6 | KDS-DEG 27-28 | 4044211215507 | 10 PC |

28506.4

KDS-SR 1-4 BK

KDS-SR 1-4 BK

Accessories

Dichtelemente groß



Seal, Mounting type: Plug in, Length x width: 42.8 mm, Max. cable diameter: 33 mm, IP 66, Colour: Black

In general

| Order number | Article designation | GTIN (EAN) | Packaging unit |
|--------------|---------------------|---------------|----------------|
| 28601.4 | KDS-DEG 32-33 | 4044211215613 | 10 PC |



Seal, Mounting type: Plug in, Length x width: 42.8 mm, Max. cable diameter: 33 mm, IP 66, Colour: Grey

In general

| Order number | Article designation | GTIN (EAN) | Packaging unit |
|--------------|---------------------|---------------|----------------|
| 28733.6 | KDS-DEG 34-35 | 4044211220990 | 10 PC |

28506.4

KDS-SR 1-4 BK

KDS-SR 1-4 BK

Accessories

Actuating tool

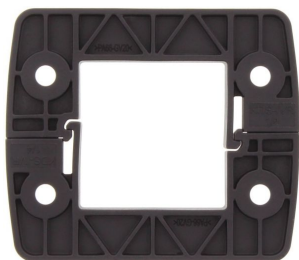


Actuating tool, Material: Polyamide

In general

| Order number | Article designation | GTIN (EAN) | Packaging unit |
|--------------|---------------------|---------------|----------------|
| 28622.0 | KDS BW 1 | 4044211216597 | 1 PC |

Locking frames



Inner locking frame, Length: 80 mm, Height: 11.5 mm,
Colour: Black

In general

| Order number | Article designation | GTIN (EAN) | Packaging unit |
|--------------|---------------------|---------------|----------------|
| 28507.4 | KDS-IVR 1-4 | 4044211210830 | 10 PC |

28506.4

KDS-SR 1-4 BK

KDS-SR 1-4 BK

Accessories

EMV-Bügel



Shield-connection rail enabling mounting of shield connection clips directly on cable entry system KDS, Mounting type: Screw, Length: 35,3 mm, Width: 68 mm, Height: 16 mm, Profile: 10x3 mm

In general

| Order number | Article designation | GTIN (EAN) | Packaging unit |
|--------------|---------------------|---------------|----------------|
| 28623.0 | KDS-EMV-SAB 1-4 | 4044211219628 | 1 PC |
