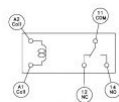
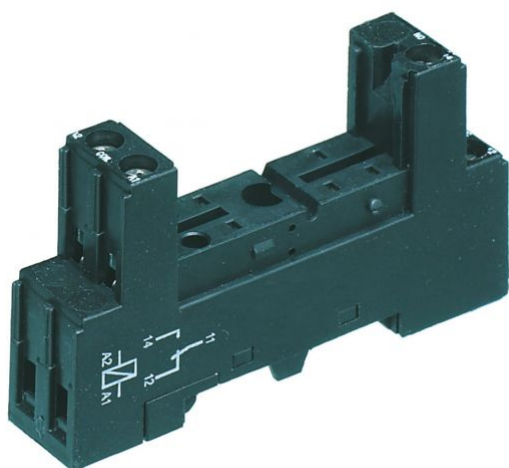


15135.2

PRS 1

PRS 1



Relay socket base PRS, for miniature power relay with 1 CO contact, Screw connection, Plug-in option for input/suppression modules, Mounting type: Mounting rail TS 35

## Business data

Product description	Relay socket base with screw connection
Packaging unit	1
Quantity unit	PC
Weight per piece (not including packaging)	33.7
Weight per piece (including packaging)	38.2
Unit of weight	G
Customs number	85366990
Country of origin	CN

15135.2

PRS 1

PRS 1

## Technical Data

---

### Dimensions

---

Length	76 mm
Width	15.8 mm
Height TS 35 / 7.5 with BA	46 mm

### Ratings

---

Overvoltage category	III
Contamination degree	2

### Connection data

---

Connection principle	Screw connection
Wire cross-section single core (rigid), min.	0.2 mm <sup>2</sup>
Wire cross-section single-core (rigid), max.	2.5 mm <sup>2</sup>
Wire cross-section stranded, min.	0.2 mm <sup>2</sup>
Wire cross-section stranded, max.	2.5 mm <sup>2</sup>
Wire cross-section stranded with wire-end ferrules, min.	0.2 mm <sup>2</sup>
Wire cross-section stranded with wire-end ferrules, max.	2.5 mm <sup>2</sup>
Stripping length	8 mm
Torque	0.8 Nm

### Output data

---

Switching voltage / switching voltage max.	230 / 400 VAC
Continuous current max. / Inrush current max.	12 A
Contact configuration	1 CO contact

### Materials

---

Flammability class UL 94	V-0
Working temperature, min.	-25 °C
Working temperature, max.	80 °C

### Further technical data

---

Protection

Creation date 08.06.2010 10:53:26  
Subject to technical modifications

Insulation voltage coil/contact

IP20  
4 kV

Further technical data

# Datasheet



Insulation voltage contact/contact

1 kV

15135.2

Pinning

3,5 mm

PRS 1

PRS 1

## Technical Data

---

15135.2

PRS 1

PRS 1

## Approvals

---

## Standards and regulations

---

CE compliant

✓

15135.2

PRS 1

PRS 1

Media

---

