

NEW

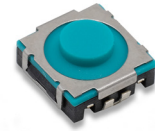
TLS Series Soft Sound Tact Switch

Features/Benefits

- New soft sound
- Soft actuator
- IP54
- Long life
- J terminations
- Tape & reel

Typical Applications

- Automotive interior controls
- Automatic gear shift paddle
- Steering wheel
- Window lifter
- Seat adjustment module



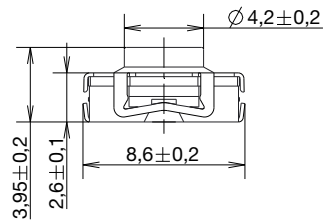
Type	Force (N)	Tactile Feeling (%)	Travel (mm)	Life (cycles)
TLS A 040J LFS	4 ± 0.8	50 ± 15	0.9 ± 0.3	500,000
TLS A 070J LFS	7 ± 1.5			500,000
TLS A 100J LFS	10 ± 2			300,000
TLS A 040 T3J LFS	4 ± 0.8	30 ± 15		500,000
TLS A 070 T3J LFS	7 ± 1.5			500,000
TLS A 100 T3J LFS	10 ± 2			300,000

POWER: 10μ VA min. / 0.8 VA max.

VOLTAGE: DC 1V min. / 16 V max.

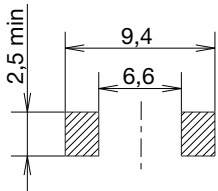
CURRENT: 10μA min. / 50 mA max.

OPERATING TEMPERATURE: -40°C / +90°C

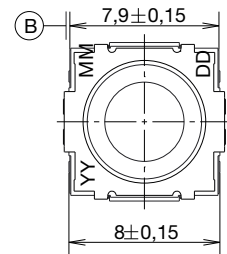
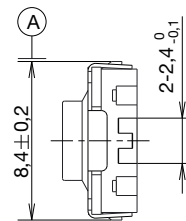


Tactile Switches

PCB LAYOUT



CIRCUIT DIAGRAM



Packaging

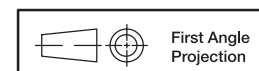
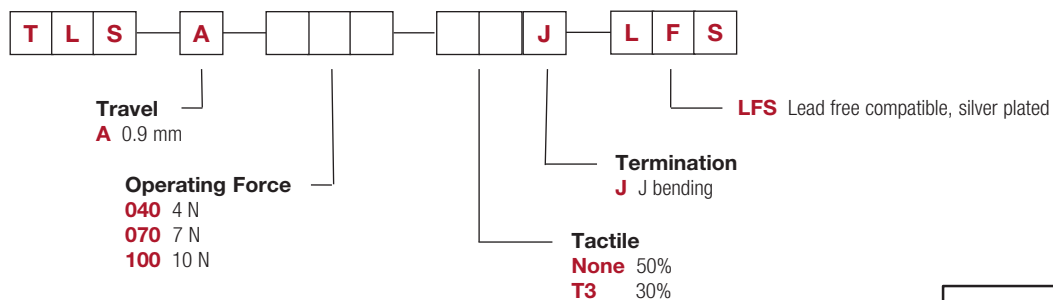
Switches in reels of 900 pieces.

Dimensions of reels according to EIA 481B. External diameter 330 mm.

How To Order

Our easy build-a-switch concept allows you to mix and match options to create the switch you need. To order, select desired option from each category and place it in the appropriate box.

For any part number different from those listed above, please consult your local representative.



Dimensions are shown: mm
Specifications and dimensions subject to change



26 Mar 20