

Alubos



Detailed product information
can be found on
www.bopla.de



- 4 profile variants
- 9 profile cross-sections
- Standard lengths ex warehouse
- Special lengths available at short notice
- Functional diecast aluminium end covers
- Good EMC shielding
- Design seals in 5 colours
- Wide range of accessories
- Good heat dissipation in combination with IP 65

Colour:

Black, similar to RAL 9005; special colours on request

Protection class:

ABP, ABPH: up to IP 65/DIN EN 60529; ABPU: IP 40/DIN EN 60529

Enclosure material:

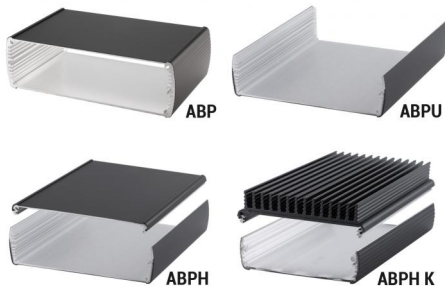
Extruded profiles: Al Mg Si 0.5 powder-coated; diecast lid: GB Al Si 12, powder-coated; seal: TPE; for details see Technical Information



BOPLA

A Phoenix Mecano Company

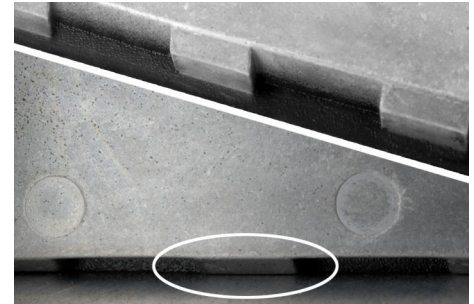
Universal aluminium profile enclosure, IP 65



The flexible length and profile variants closed (ABP), horizontally-divided (ABPH), horizontally-divided with heat-sink (ABPH K) or open on one side (ABPU) offer the right enclosure for every application.



The recessed profile sides are suitable for fitting membrane keypads. The side surfaces are ergonomically designed.



Good EMC protection by means of contact surfaces which contact the lid to the profile. EMC seals are available if greater protection is required.



ABD – end cover with a recessed area for fitting front membranes or membrane keypads.



ABM...AL – mounting lid with a recessed mounting area. An aluminium cap with seal can be snapped on to achieve IP 65 protection.



ABM...SAL – Mounting lid with a hinged aluminium flap, IP 65



ABM...IR – mounting lid with a recessed mounting area. An infrared-permissive plastic cap can be snapped on to achieve IP 65 protection.

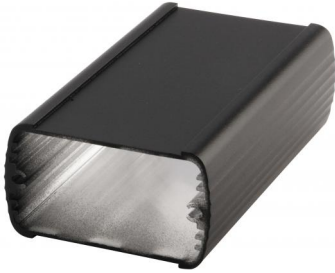


DI... – a black seal is included with all lids. Coloured seals and an EMC or UL 94 V0 seal are also available.



Various optional accessory components such as impact protection, wall brackets, tip-up and standard handles are available.

Alubos 600 | Enclosure profiles



Enclosure profiles, closed

Model	Order no.	A	B	C
ABP 600-0100	84060100	57	32	100
ABP 600-0150	84060150	57	32	150
ABP 600-0200	84060200	57	32	200
ABP 600-1000	84060000	57	32	1000

Scope Of Delivery: Enclosure profile

Notes: C = profile length, special lengths on request.



Enclosure profiles, horizontally-divided

Model	Order no.	A	B	C
ABPH 600-0100	84066100	57	32	100
ABPH 600-0150	84066150	57	32	150
ABPH 600-0200	84066200	57	32	200
ABPH 600-1000	84066001	57	32	1000

Scope Of Delivery: Enclosure profile, two parts including profile seal

Notes: C = profile length, special lengths on request.

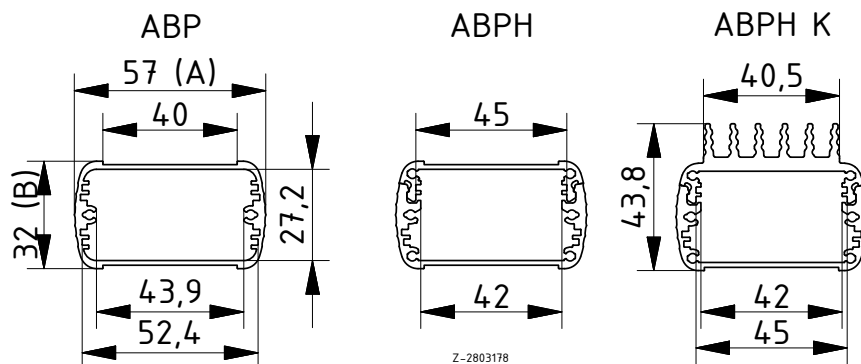


Enclosure profiles with cooling element, horizontally divided

Model	Order no.	A	B	C
ABPH 600-0100 K	84506100	57	32	100
ABPH 600-0150 K	84506150	57	32	150
ABPH 600-0200 K	84506200	57	32	200

Scope Of Delivery: Enclosure profile, two parts including profile seal

Notes: C = profile length, special lengths on request.



Z-2803178

* = Available on request

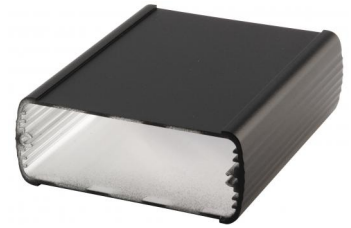
Alubos 800 | Enclosure profiles

Enclosure profiles, closed

Model	Order no.	A	B	C
ABP 800-0100	84080100	82	32	100
ABP 800-0150	84080150	82	32	150
ABP 800-0200	84080200	82	32	200
ABP 800-1000	84080000	82	32	1000

Scope Of Delivery: Enclosure profile

Notes: C = profile length, special lengths on request.

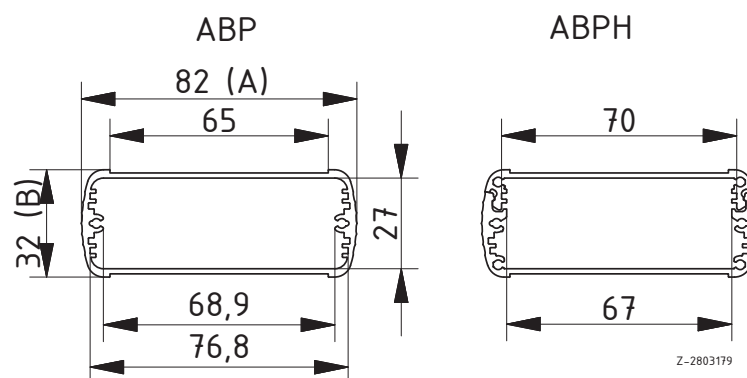
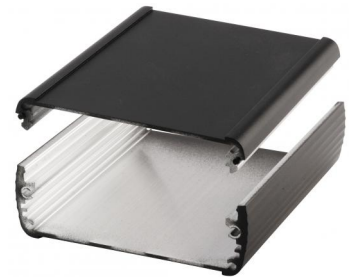


Enclosure profiles, horizontally-divided

Model	Order no.	A	B	C
ABPH 800-0100	84086100	82	32	100
ABPH 800-0150	84086150	82	32	150
ABPH 800-0200	84086200	82	32	200
ABPH 800-1000	84086001	82	32	1000

Scope Of Delivery: Enclosure profile, two parts including profile seal

Notes: C = profile length, special lengths on request.



Z-2803179

For accessories, please see the end of the chapter

Alubos 820 | Enclosure profiles



Enclosure profiles, closed

Model	Order no.	A	B	C
ABP 820-0100	84820100	82	22	100
ABP 820-0150	84820150	82	22	150
ABP 820-0200	84820200	82	22	200
ABP 820-1000	84820000	82	22	1000

Scope Of Delivery: Enclosure profile

Notes: C = profile length, special lengths on request.

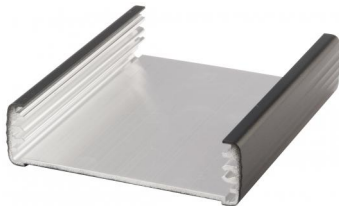


Enclosure profiles, horizontally-divided

Model	Order no.	A	B	C
ABPH 820-0100	84826100	82	22	100
ABPH 820-0150	84826150	82	22	150
ABPH 820-0200	84826200	82	22	200
ABPH 820-1000	84826000	82	22	1000

Scope Of Delivery: Enclosure profile, two parts including profile seal

Notes: C = profile length, special lengths on request.

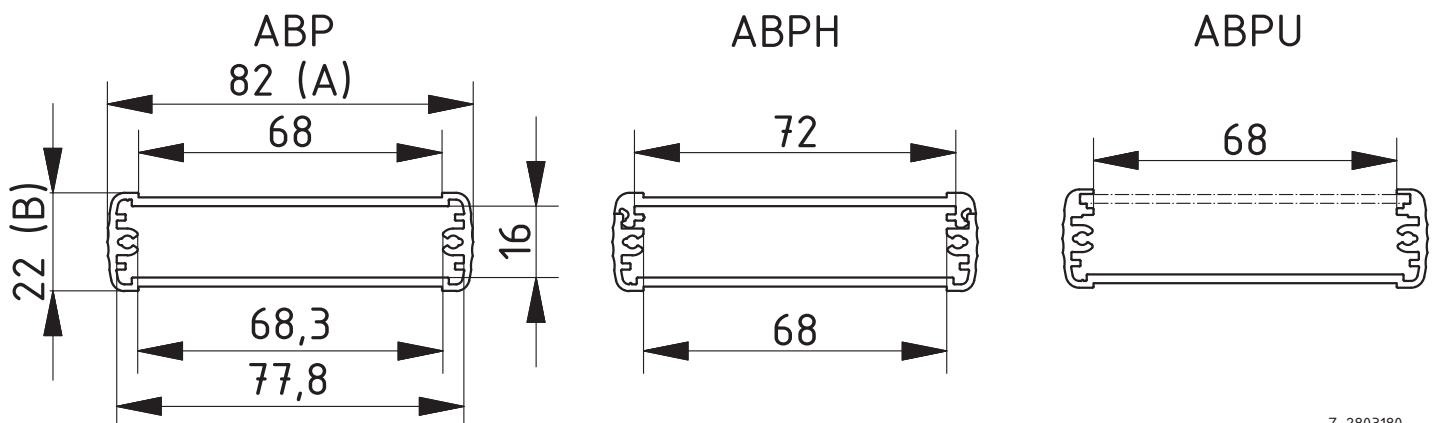


Enclosure profiles, open on one side

Model	Order no.	A	B	C
ABPU 820-0100	84827100	82	22	100
ABPU 820-0150	84827150	82	22	150
ABPU 820-0200	84827200	82	22	200
ABPU 820-1000	84827000	82	22	1000

Scope Of Delivery: Enclosure profile. Please order front panel for ABPU separately.

Notes: C = profile length, special lengths on request.



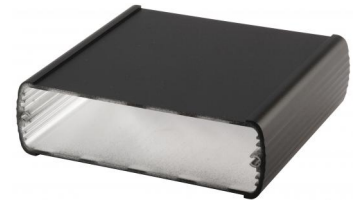
Alubos 1000 | Enclosure profiles

Enclosure profiles, closed

Model	Order no.	A	B	C
ABP 1000-0100	84100100	106	32	100
ABP 1000-0150	84100150	106	32	150
ABP 1000-0200	84100200	106	32	200
ABP 1000-1000	84100000	106	32	1000

Scope Of Delivery: Enclosure profile

Notes: C = profile length, special lengths on request.

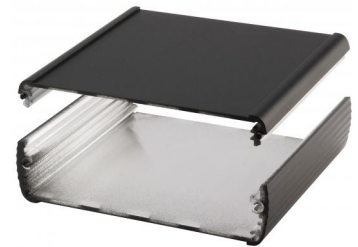


Enclosure profiles, horizontally-divided

Model	Order no.	A	B	C
ABPH 1000-0100	84106100	106	32	100
ABPH 1000-0150	84106150	106	32	150
ABPH 1000-0200	84106200	106	32	200
ABPH 1000-1000	84106001	106	32	1000

Scope Of Delivery: Enclosure profile, two parts including profile seal

Notes: C = profile length, special lengths on request.

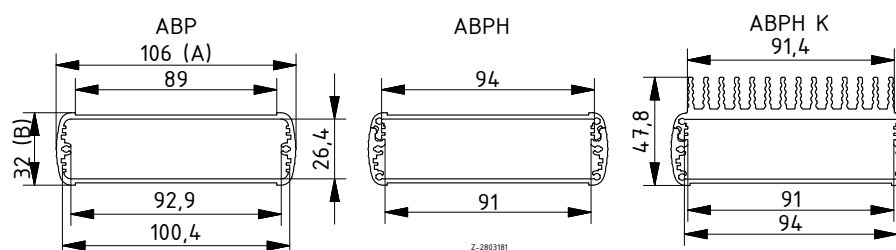


Enclosure profiles with cooling element, horizontally divided

Model	Order no.	A	B	C
ABPH 1000-0100 K	84510100	106	32	100
ABPH 1000-0150 K	84510150	106	32	150
ABPH 1000-0200 K	84510200	106 <td 32	200	

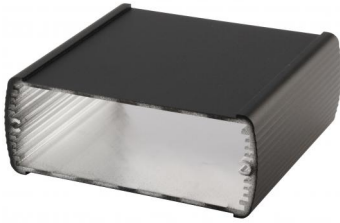
Scope Of Delivery: Enclosure profile, two parts including profile seal

Notes: C = profile length, special lengths on request.



For accessories, please see the end of the chapter

Alubos 1040 | Enclosure profiles



Enclosure profiles, closed

Model	Order no.	A	B	C
ABP 1040-0100	84040100	108	42	100
ABP 1040-0150	84040150	108	42	150
ABP 1040-0200	84040200	108	42	200
ABP 1040-1000	84040000	108	42	1000

Scope Of Delivery: Enclosure profile

Notes: C = profile length, special lengths on request.



Enclosure profiles, horizontally-divided

Model	Order no.	A	B	C
ABPH 1040-0100	84046100	108	42	100
ABPH 1040-0150	84046150	108	42	150
ABPH 1040-0200	84046200	108	42	200
ABPH 1040-1000	84046000	108	42	1000

Scope Of Delivery: Enclosure profile, two parts including profile seal

Notes: C = profile length, special lengths on request.

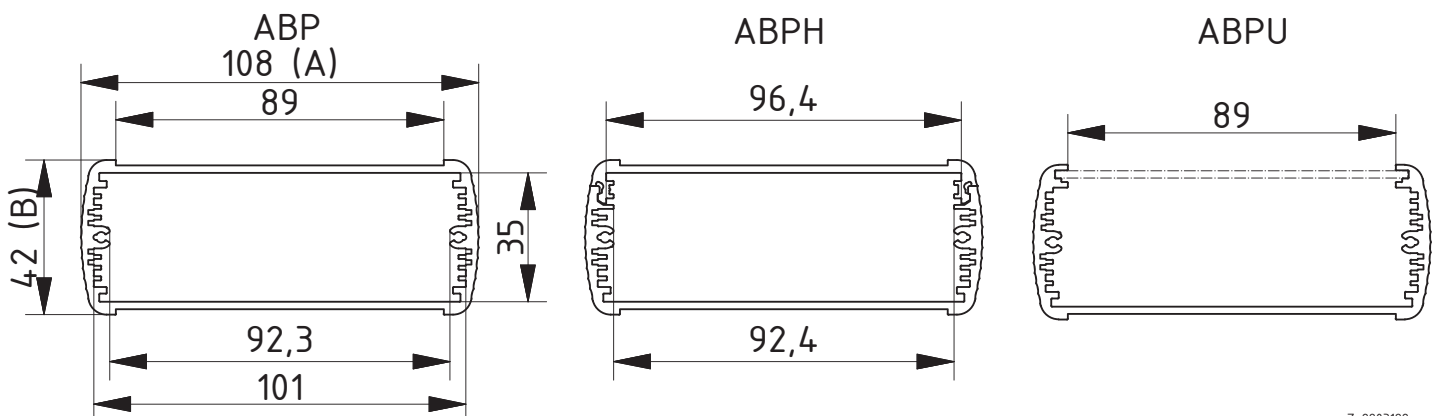


Enclosure profiles, open on one side

Model	Order no.	A	B	C
ABPU 1040-0100	84047100	108	42	100
ABPU 1040-0150	84047150	108	42	150
ABPU 1040-0200	84047200	108	42	200
ABPU 1040-1000	84047000	108	42	1000

Scope Of Delivery: Enclosure profile. Please order front panel for ABPU separately.

Notes: C = profile length, special lengths on request.



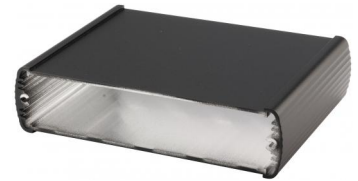
Alubos 1300 | Enclosure profiles

Enclosure profiles, closed

Model	Order no.	A	B	C
ABP 1300-0100	84130100	138	34	100
ABP 1300-0150	84130150	138	34	150
ABP 1300-0200	84130200	138	34	200
ABP 1300-1000	84130000	138	34	1000

Scope Of Delivery: Enclosure profile

Notes: C = profile length, special lengths on request.



Enclosure profiles, horizontally-divided

Model	Order no.	A	B	C
ABPH 1300-0100	84136100	138	34	100
ABPH 1300-0150	84136150	138	34	150
ABPH 1300-0200	84136200	138	34	200
ABPH 1300-1000	84136000	138	34	1000

Scope Of Delivery: Enclosure profile, two parts including profile seal

Notes: C = profile length, special lengths on request.

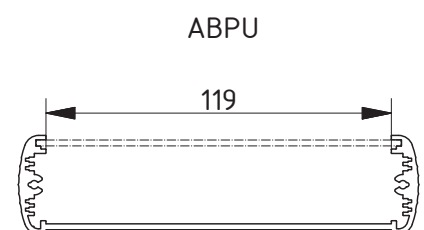
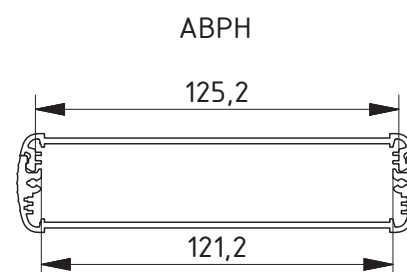
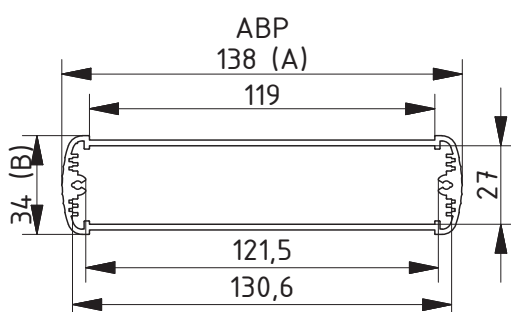


Enclosure profiles, open on one side

Model	Order no.	A	B	C
ABPU 1300-0100	84137100	138	34	100
ABPU 1300-0150	84137150	138	34	150
ABPU 1300-0200	84137200	138	34	200
ABPU 1300-1000	84137000	138	34	1000

Scope Of Delivery: Enclosure profile. Please order front panel for ABPU separately.

Notes: C = profile length, special lengths on request.



For accessories, please see the end of the chapter

Alubos 1600 | Enclosure profiles

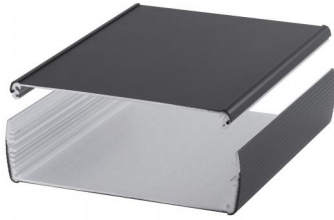


Enclosure profiles, closed

Model	Order no.	A	B	C
ABP 1600-0100	84160100	169	52	100
ABP 1600-0150	84160150	169	52	150
ABP 1600-0200	84160200	169	52	200
ABP 1600-1000	84160001	169	52	1000

Scope Of Delivery: Enclosure profile

Notes: C = profile length, special lengths on request.



Enclosure profiles, horizontally-divided

Model	Order no.	A	B	C
ABPH 1600-0100	84166100	169	52	100
ABPH 1600-0150	84166150	169	52	150
ABPH 1600-0200	84166200	169	52	200
ABPH 1600-1000	84166001	169	52	1000

Scope Of Delivery: Enclosure profile, two parts including profile seal

Notes: C = profile length, special lengths on request.

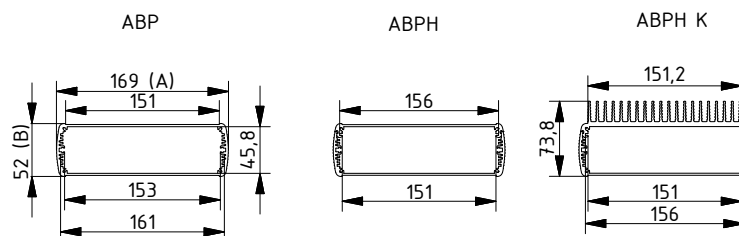


Enclosure profiles with cooling element, horizontally divided

Model	Order no.	A	B	C
ABPH 1600-0100 K	84516100	169	52	100
ABPH 1600-0150 K	84516150	169	52	150
ABPH 1600-0200 K	84516200	169	52	200

Scope Of Delivery: Enclosure profile, two parts including profile seal

Notes: C = profile length, special lengths on request.



* = Available on request

Z-2893184



BOPLA

A Phoenix Mecano Company

Alubos 1680 | Enclosure profiles

Enclosure profiles, closed

Model	Order no.	A	B	C
ABP 1680-0100	84680100	169	82	100
ABP 1680-0150	84680150	169	82	150
ABP 1680-0200	84680200	169	82	200
ABP 1680-1000	84680000	169	82	1000

Scope Of Delivery: Enclosure profile

Notes: C = profile length, special lengths on request.



Enclosure profiles, horizontally-divided

Model	Order no.	A	B	C
ABPH 1680-0100	84686100	169	82	100
ABPH 1680-0150	84686150	169	82	150
ABPH 1680-0200	84686200	169	82	200
ABPH 1680-1000	84686000	169	82	1000

Scope Of Delivery: Enclosure profile, two parts including profile seal

Notes: C = profile length, special lengths on request.

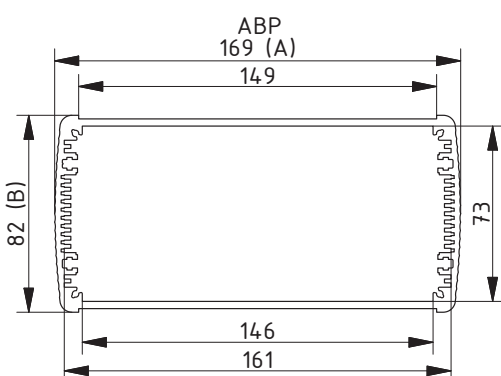


Enclosure profiles, open on one side

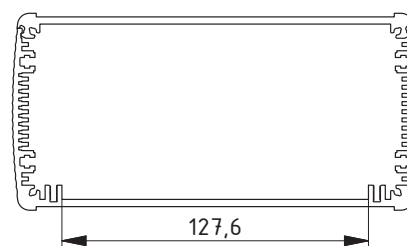
Model	Order no.	A	B	C
ABPU 1680-0100	84687100	169	82	100
ABPU 1680-0150	84687150	169 <td 82	150	
ABPU 1680-0200	84687200	169	82	200
ABPU 1680-1000	84687000	169	82	1000

Scope Of Delivery: Enclosure profile. Please order front panel for ABPU separately.

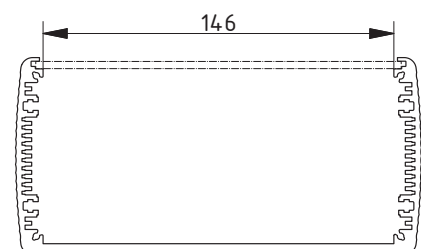
Notes: C = profile length, special lengths on request.



ABPH



ABPU



For accessories, please see the end of the chapter

Alubos 2070 | Enclosure profiles

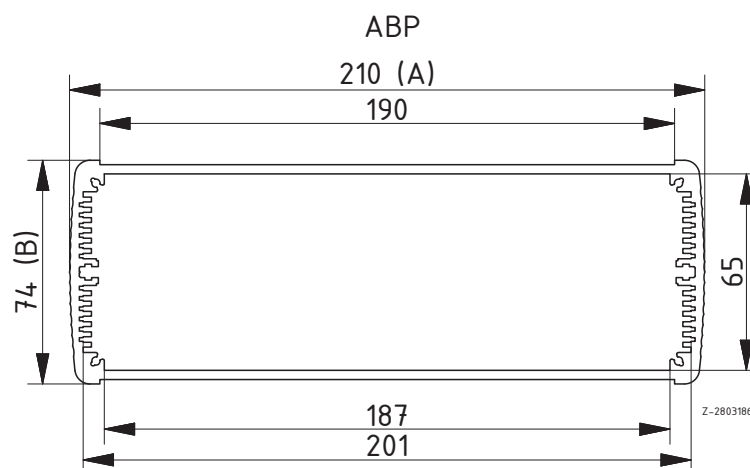


Enclosure profiles, closed

Model	Order no.	A	B	C
ABP 2070-0100	84207100	210	74	100
ABP 2070-0150	84207150	210	74	150
ABP 2070-0200	84207200	210	74	200
ABP 2070-1000	84207000	210	74	1000

Scope Of Delivery: Enclosure profile

Notes: C = profile length, special lengths on request.



* = Available on request

Alubos | Accessories

End cover

Model	Order no.	Note
ABD 600	84061000	For AB 600
ABD 800	84081000	For AB 800
ABD 820	84821000	For AB 820
ABD 1000	84101000	For AB 1000
ABD 1040	84041000	For AB 1040
ABD 1300	84131000	For AB 1300
ABD 1600	84161000	For AB 1600
ABD 1680	84168100	For AB 1680
ABD 2070	84271000	For AB 2070

Scope Of Delivery: Lid, black seal, screws, black screw covers



Mounting lid with removable aluminium cap

Model	Order no.	Note
ABM 600 AL	84062000	For AB 600
ABM 800 AL	84082000	For AB 800
ABM 1000 AL	84102000	For AB 1000

Scope Of Delivery: Mounting lid, aluminium profile cap, black seal, screws, black screw covers



Mounting lid with hinged aluminium flap

Model	Order no.	Note
ABM 600 SAL	84064000	For AB 600
ABM 800 SAL	84084000	For AB 800
ABM 1000 SAL	84104000	For AB 1000
ABM 1040 SAL	84044000	For AB 1040
ABM 1300 SAL	84134000	For AB 1300

Scope Of Delivery: Mounting lid, hinged aluminium flap, black seal, screws, black screw covers



Mounting lid with removable aluminium cap and compartment for 9V block battery

Model	Order no.	Note
ABM 600 AL BE	84062100	For AB 600
ABM 800 AL BE	84082100	For AB 800
ABM 1000 AL BE	84102100	For AB 1000

Scope Of Delivery: Mounting lid, aluminium profile cap, compartment for 9V block battery (6LR61, 6AM6, 522), black seal, screws, black screw covers

Notes: Additional battery compartments available on request.



Mounting lid with hinged aluminium flap and compartment for 9V block battery

Model	Order no.	Note
ABM 600 SAL-BE	84064100	For AB 600
ABM 800 SAL-BE	84084100	For AB 800
ABM 1000 SAL-BE	84104100	For AB 1000

Scope Of Delivery: Mounting lid, hinged aluminium flap, compartment for 9 V block battery (6LR61, 6AM6, 522), black seal, screws, black screw covers

Notes: Additional battery compartments available on request.



Alubos | Accessories



Mounting lid with infrared-permissive plastic cap

Model	Order no.	Note
ABM 600 IR	84063000	For AB 600
ABM 800 IR	84083000	For AB 800
ABM 1000 IR	84103000	For AB 1000

Scope Of Delivery: Mounting lid, infrared-permissive plastic cap, black seal, screws, black screw covers
Notes: Additional battery compartments available on request.



Mounting lid with infrared-permissive plastic cap and compartment for 9V block battery

Model	Order no.	Note
ABM 600 IR BE	84063100*	For AB 600
ABM 800 IR BE	84083100*	For AB 800
ABM 1000 IR BE	84103100*	For AB 1000

Scope Of Delivery: Mounting lid, infrared-permissive plastic cap, compartment for 9 V block battery (6LR61, 6AM6, 522), black seal, screws, black screw covers
Notes: Additional battery compartments available on request.



Impact protection seals, fire red

Model	Order no.	Note
DI-S 1040-3000	84200430	For ABD 1040

Scope Of Delivery: 2 seals



EMC seals

Model	Order no.	Note
DI 600-EMV	84200615	For AB 600
DI 800-EMV	84200815	For AB 800
DI 820-EMV	84208215	For AB 820
DI 1000-EMV	84201015	For AB 1000
DI 1040-EMV	84200415	For AB 1040
DI 1300-EMV	84201315	For AB 1300
DI 1600-EMV	84201615	For AB 1600
DI 1680-EMV	84206815	For AB 1680
DI 2070-EMV	84202715	For AB 2070

Scope Of Delivery: 10 seals



Seals, ultramarine

Model	Order no.	Note
DI 600-5002	84200614	For AB 600
DI 800-5002	84200814	For AB 800
DI 820-5002	84208214	For AB 820
DI 1000-5002	84201014	For AB 1000
DI 1040-5002	84200414	For AB 1040
DI 1300-5002	84201314	For AB 1300
DI 1600-5002	84201614	For AB 1600
DI 1680-5002	84206814	For AB 1680
DI 2070-5002	84202714	For AB 2070

Scope Of Delivery: 10 seals

Alubos | Accessories

Seals, fire red

Model	Order no.	Note
DI 600-3000	84200611	For AB 600
DI 800-3000	84200811	For AB 800
DI 820-3000	84208211	For AB 820
DI 1000-3000	84201011	For AB 1000
DI 1040-3000	84200411	For AB 1040
DI 1300-3000	84201311	For AB 1300
DI 1600-3000	84201616	For AB 1600
DI 1680-3000	84206811	For AB 1680
DI 2070-3000	84202711	For AB 2070

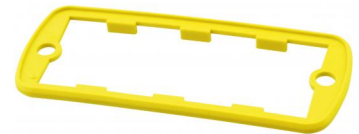
Scope Of Delivery: 10 seals



Seals, rape yellow

Model	Order no.	Note
DI 600-1021	84200612	For AB 600
DI 800-1021	84200812	For AB 800
DI 820-1021	84208212	For AB 820
DI 1000-1021	84201012	For AB 1000
DI 1040-1021	84200412	For AB 1040
DI 1300-1021	84201312	For AB 1300
DI 1600-1021	84201612	For AB 1600
DI 1680-1021	84206812	For AB 1680
DI 2070-1021	84202712	For AB 2070

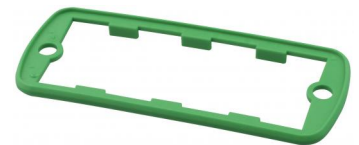
Scope Of Delivery: 10 seals



Seals, patina green

Model	Order no.	Note
DI 600-6000	84200613	For AB 600
DI 800-6000	84200813	For AB 800
DI 820-6000	84208213	For AB 820
DI 1000-6000	84201013	For AB 1000
DI 1040-6000	84200413	For AB 1040
DI 1300-6000	84201313	For AB 1300
DI 1600-6000	84201613	For AB 1600
DI 1680-6000	84206813	For AB 1680
DI 2070-6000	84202713	For AB 2070

Scope Of Delivery: 10 seals



Seals UL 94 V0

Model	Order no.	Note
DI 600-V0	84200619*	For AB 600
DI 800-V0	84200819*	For AB 800
DI 820-V0	84208219*	For AB 820
DI 1000-V0	84201019*	For AB 1000
DI 1040-V0	84200419*	For AB 1040
DI 1300-V0	84201319*	For AB 1300
DI 1600-V0	84201619*	For AB 1600
DI 1680-V0	84206819*	For AB 1680
DI 2070-V0	84202719*	For AB 2070

Scope Of Delivery: 10 seals



Alubos | Accessories



Wall brackets, sheet steel

Model	Order no.	Note
AB-WL	84005000	For AB 600/800/1000/1300
AB-WL1	84006001	For AB 820
AB-WL2	84007000	For AB 1040
AB-WL 3	84008000	For AB 1600/1680/2070

Scope Of Delivery: Wall brackets, sealing rings, screws



Wall brackets, adjustable, sheet steel

Model	Order no.	Note
AB-600 WL V	84065000	For AB 600
AB-800 WL V	84085000	For AB 800/820
AB-1000 WL V	84105000	For AB 1000/1040

Scope Of Delivery: Wall brackets (2 top parts, 2 bottom parts), 2 metric screws, 2 serrated lock washers, 4 sealing rings, 4 screws 18mm long for ABD lid, 4 screws (22mm long for ABM lid)

Notes: The enclosures can be tilted at angles between 0° and 90° (80° with AB 1040).



Handle / Tip-up bow, hinged

Model	Order no.	Note
AB 1600 HS	84162000	For AB 1600/1680
AB 2000 HS	84200000	For AB 2070

Scope Of Delivery: Handle side parts (PA6), seals, screws

Scope of delivery HSP: profile (aluminium)

Notes: Fixed 30° handle locking position. The necessary processing, plus versions for fitting to the lids, on request. The maximum load is 300 N.



Front panels, natural-coloured anodised aluminium

Model	Order no.	Note
ABPU 820-0100 FP2	84828100	For ABPU 820-0100, 2 mm
ABPU 820-0150 FP2	84828150	For ABPU 820-0150, 2 mm
ABPU 820-0200 FP2	84828200	For ABPU 820-0200
ABPU 820-1000 FP2	84828000	For ABPU 820-1000, 2 mm
ABPU 1040-0100 FP2	84048100	For ABPU 1040-0100, 2 mm
ABPU 1040-0150 FP2	84048150	For ABPU 1040-0150, 2 mm
ABPU 1040-0200 FP2	84048200	For ABPU 1040-0200, 2 mm
ABPU 1040-1000 FP2	84048000	For ABPU 1040-1000, 2 mm
ABPU 1300-0100 FP2	84138100	For ABPU 1300-0100
ABPU 1300-0150 FP2	84138150	For ABPU 1300-0150, 2 mm
ABPU 1300-0200 FP2	84138200	For ABPU 1300-0200, 2 mm
ABPU 1300-1000 FP2	84138000	For ABPU 1300-1000, 2 mm
ABPU 1680-0100 FP3	84689100	For ABPU 1680-0100, 3 mm
ABPU 1680-0150 FP3	84689150	For ABPU 1680-0150, 3 mm
ABPU 1680-0200 FP3	84689200	For ABPU 1680-0200, 3 mm
ABPU 1680-1000 FP3	84689000	For ABPU 1680-1000, 3 mm

Scope Of Delivery: 1 front panel

Alubos | Accessories

Mounting clamps

Model	Order no.	Note
AB 600 MKL	84006600	For AB 600
AB 800 MKL	84006400	For AB 800
AB 1000 MKL	84006500	For AB 1000
AB 1040 MKL	84006510	For AB 1040
AB-MKL	84006300	For AB 600/800/1000

Scope Of Delivery: 1 mounting clamp (stainless spring steel)

Notes: We recommend using two clamps for profile lengths of 150 mm and over. Direct wall mounting of the clamps is possible with all versions. On request, the mounting clamps can also be supplied coated. Mounting clamp for other profile sizes on request.



Self-adhesive rubber feet, black

Model	Order no.	Colour	Note
AB - GF	84006700	Black	Polyurethane, 65-75 Shore

Scope Of Delivery: 4 rubber feet

