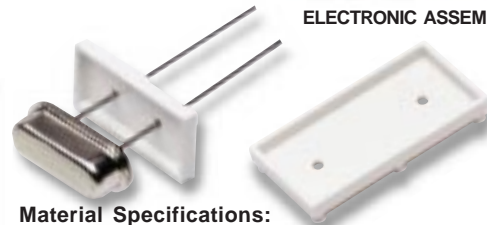
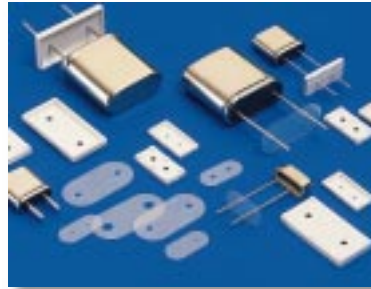
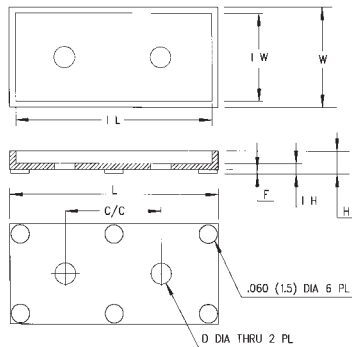


Crystal Mount Series



Material Specifications:

Nylon, per ASTM D 4066 PA111, U.L. Rated 94V-2



Oxygen Rating Index: Over 28%

Standard Drawing Tolerances, unless otherwise indicated:

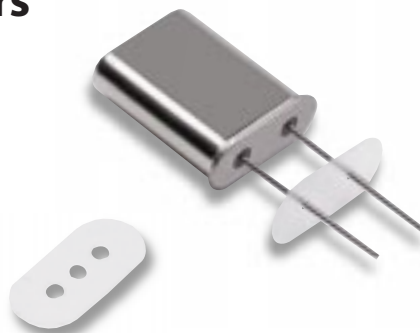
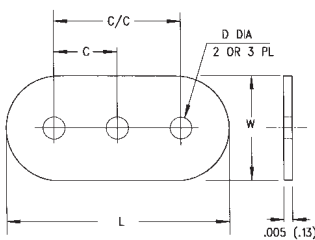
Fractions: = ± 1/64 (.40)

.X = ± 1/64 (.40) .XX = ± .010 (.254) .XXX = ± .005 (.127)

Color: White

PART NO.	L	IL	W	IW	C/C	D	IH	F	CASE H	STYLE	PRICE CODE
470-015	.495 (12.6)	.455 (11.6)	.245 (6.2)	.205 (5.2)	.192 (4.9)	.028 (.71)	.015 (.38)	.000	.050 (1.3)	I	H
470-025	.495 (12.6)	.455 (11.6)	.245 (6.2)	.205 (5.2)	.192 (5.2)	.028 (.71)	.025 (.64)	.010 (.25)	.060 (1.5)	I	H
470-035	.495 (12.6)	.455 (11.6)	.245 (6.2)	.205 (5.2)	.192 (4.9)	.028 (.71)	.035 (.89)	.020 (.51)	.070 (1.8)	I	H
470-045	.495 (12.6)	.455 (11.6)	.245 (6.2)	.205 (5.2)	.192 (4.9)	.028 (.71)	.045 (.71)	.030 (.76)	.080 (2.0)	I	H
471-015	.495 (12.6)	.455 (12.6)	.245 (6.2)	.205 (5.2)	.192 (4.9)	.050 (1.3)	.015 (.38)	.000	.050 (1.3)	II	H
471-025	.495 (12.6)	.455 (11.6)	.245 (6.2)	.205 (5.2)	.192 (4.9)	.050 (1.3)	.025 (.64)	.010 (.25)	.060 (1.5)	II	H
471-035	.495 (12.6)	.455 (11.6)	.245 (6.2)	.205 (6.2)	.192 (4.9)	.050 (1.3)	.035 (.89)	.020 (.51)	.070 (1.8)	II	H
471-045	.495 (12.6)	.455 (11.6)	.245 (6.2)	.205 (5.2)	.192 (4.9)	.050 (1.3)	.045 (1.1)	.030 (.76)	.080 (2.0)	II	H
472-015	.825 (21.0)	.775 (19.7)	.425 (10.8)	.375 (9.5)	.486 (12.3)	.040 (1.0)	.015 (.38)	.000	.075 (1.9)	III	J
472-025	.825 (21.0)	.775 (19.7)	.425 (10.8)	.375 (9.5)	.486 (12.3)	.040 (1.0)	.025 (.64)	.010 (.25)	.085 (2.2)	III	J
472-035	.825 (21.0)	.775 (19.7)	.425 (10.8)	.375 (9.5)	.486 (12.3)	.040 (1.0)	.035 (.89)	.020 (.51)	.095 (2.4)	III	J
472-045	.825 (21.0)	.775 (19.7)	.425 (10.8)	.375 (9.5)	.486 (12.3)	.040 (1.0)	.045 (1.1)	.030 (.76)	.105 (2.7)	III	J
473-015	.825 (21.0)	.775 (19.7)	.425 (10.8)	.375 (9.5)	.486 (12.3)	.060 (1.5)	.015 (.38)	.000	.075 (1.9)	IV	J
473-025	.825 (21.0)	.775 (19.7)	.425 (10.8)	.375 (9.5)	.486 (12.3)	.060 (1.5)	.025 (.64)	.010 (.25)	.085 (2.2)	IV	J
473-035	.825 (21.0)	.775 (19.7)	.425 (10.8)	.375 (9.5)	.486 (12.3)	.060 (1.5)	.035 (.89)	.020 (.51)	.095 (2.4)	IV	J
473-045	.825 (21.0)	.775 (19.7)	.425 (10.8)	.375 (9.5)	.486 (12.3)	.060 (1.5)	.045 (1.1)	.030 (.76)	.105 (2.7)	IV	J
474-015	.825 (21.0)	.775 (19.7)	.425 (10.8)	.375 (9.5)	.486 (12.3)	.110 (2.8)	.015 (.38)	.000	.075 (1.9)	V	J
474-025	.825 (21.0)	.775 (19.7)	.425 (10.8)	.375 (9.5)	.486 (12.3)	.110 (2.8)	.025 (.64)	.010 (.25)	.085 (2.2)	V	J
474-035	.825 (21.0)	.775 (19.7)	.425 (10.8)	.375 (9.5)	.486 (12.3)	.110 (2.8)	.035 (.89)	.020 (.51)	.095 (2.4)	V	J
474-045	.825 (21.0)	.775 (19.7)	.425 (10.8)	.375 (9.5)	.486 (12.3)	.110 (2.8)	.045 (1.1)	.030 (.76)	.105 (2.7)	V	J

Crystal Insulators



Material Specifications:

Dupont, Mylar EL-21 with U.L. Rated 94V-2



Oxygen Rating Index: Over 21.1%

Standard Drawing Tolerances, unless otherwise indicated:

Fractions: = ± 1/64 (.40)

.X = ± 1/64 (.40) .XX = ± .010 (.254) .XXX = ± .005 (.127)

Color: Clear

CI Series

PART NO.	C	C/C	L	D	W	CASE STYLE	PRICE CODE	USE WITH
CI-148-028	-	.148 (3.8)	.325 (8.3)	.028 (.71)	.145 (3.7)	VI	X	HC-80/U
CI-148-028 SR*	-	.148 (3.8)	.325 (8.3)	*	.145 (3.7)	VI	X	HC-80/U
CI-148-028-3	.074 (1.9)	.148 (3.8)	.325 (8.3)	.028 (.71)	.145 (3.7)	VI	X	HC-80/U
CI-148-028-3 SR*	.074 (1.9)	.148 (3.8)	.325 (8.3)	*	.145 (3.7)	VI	X	HC-80/U
CI-192-028	-	.192 (4.9)	.465 (11.8)	.028 (.71)	.219 (5.6)	I	X	HC-18/U, HC-43/U & HC-49/U
CI-192-028 SR*	-	.192 (4.9)	.465 (11.8)	*	.219 (5.6)	I	X	HC-18/U, HC-43/U & HC-49/U
CI-192-028-3	.096 (2.4)	.192 (4.9)	.465 (11.8)	.028 (.71)	.219 (5.6)	I	X	HC-18/U, HC-43/U & HC-49/U
CI-192-028-3 SR*	.096 (2.4)	.192 (4.9)	.465 (11.8)	*	.219 (5.6)	I	X	HC-18/U, HC-43/U & HC-49/U
CI-192-050	-	.192 (4.9)	.465 (11.8)	.050 (1.3)	.219 (5.6)	II	X	HC-25/U, HC-42/U & HC-50/U
CI-192-050-3	.096 (2.4)	.192 (4.9)	.465 (11.8)	.050 (1.3)	.219 (5.6)	II	X	HC-25/U, HC-42/U & HC-50/U

* SR Stands for Self Retaining.

Note: Available by special order in Kapton High Temp.