

POWER

AIT00ZPFC-01NL

150 Watts

Data Sheet

Total Power: 150 Watts
Input Voltage: 100 - 122 Vac
of Outputs: Single

SPECIAL FEATURES

- Unity power factor
- High efficiency - up to 92%
- Civil / Aviation supply frequency range (50 / 60 / 360 - 800 Hz)
- Up to 150 W output power
- Negative enable function
- RTCA-DO 160 compliant
- IEC1000-3-2 compliance at 50 Hz to 800 Hz input
- 100 °C baseplate operating temperature
- DC Input option
- Enable output to control DC-DC Converter
- Internal active switch bypassing external inrush current components

SAFETY

- UL cUL 60950 Recognized
- TUV EN60950 Licensed



Electrical Specifications

Input

Input range	100 - 122 Vac
Input Surge	170 Vac / 500 ms
Input Frequency	50 Hz/60 Hz / 360 - 800 Hz
Efficiency	91% @ 115 Vac, 400 Hz 150 W (typical)
Total harmonic	RTCA-DO 160 Compliant
Power factor	0.99 typical (115 Vac; 50 Hz to 360 Hz; 150 W) 0.98 typical (115 Vac; 800 Hz; 150 W)

Control

LD enable	Direct drive output to opto-isolator
PFC enable	Neg TTL compatible
Voltage adjust	78% to 100% Vo

Output

Output voltage	393 V typical
Overvoltage Protection	430 V max
Power Limit for AC input	Vin = 115 Vac, Pmax = 180 W Vin = 95 Vac, Pmax = 120 W

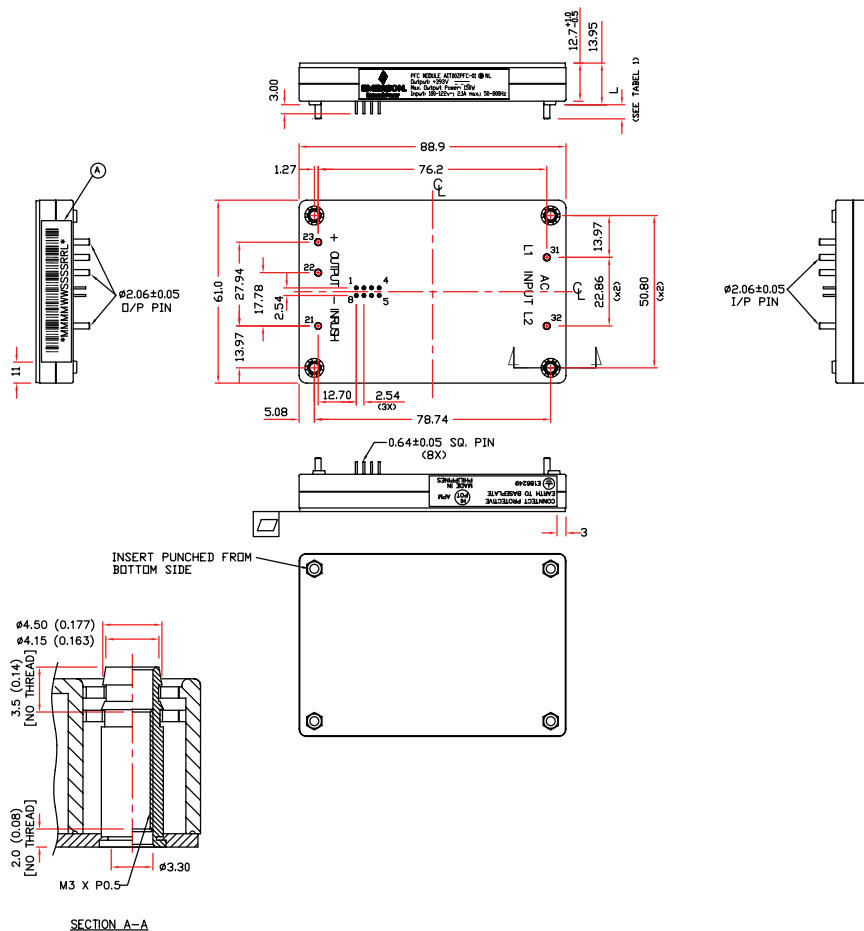
Isolation

I/O isolation	None
Input to baseplate	2700 Vdc
Output to baseplate	2700 Vdc
Leakage current	< 3 mA at 800 Hz input frequency

Environmental Specifications

Operating temperature	-20 °C to +100 °C (baseplate temperature)
Start-up temperature	-40 °C
Storage temperature	-40 °C to +120 °C
Overtemperature protection	120 °C max
MTBF	> 1 million hours

Mechanical Drawings



Pin Assignments		
Input (AC)	Output (DC)	Control Pins
31. L1	21. Inrush	1. NC
32. L1	22. Negative	2. NC
	23. Positive	3. LE Adj
		4. Temp Mon
		5. LD Enable
		6. V Adj
		7. PF Enable
		8. GND

WORLDWIDE OFFICES

Americas

2900 South Diablo Way
Suite B100
Tempe, AZ 85282, USA
+1 888 412 7832

Europe (UK)

Ground Floor Offices, Barbary House
4 Harbour Buildings, Waterfront West
Brierley Hill, West Midlands
DY5 1LN, UK
+44 (0) 1384 842 211

Asia (HK)

14/F, Lu Plaza
2 Wing Yip Street
Kwun Tong, Kowloon
Hong Kong
+852 2176 3333

ARTESYNTM
An Advanced Energy Company

www.artesyn.com

Artesyn Embedded Technologies, Artesyn Embedded Power, Artesyn, and all Artesyn related logos are trademarks and service marks of Artesyn Embedded Technologies, Inc. All other names and logos referred to are trade names, trademarks, or registered trademarks of their respective owners. Specifications are subject to change without notice. © 2019 Artesyn Embedded Technologies, Inc. All rights reserved. For full legal terms and conditions, please visit www.artesyn.com/legal.

For more information: www.artesyn.com
For support: productsupport.ep@artesyn.com