

### FEATURES

- 1.8 V analog supply operation**
- 1.8 V to 3.3 V output supply**
- SNR = 69.5 dBc (70.5 dBFS) to 70 MHz input**
- SFDR = 85 dBc to 70 MHz input**
- Low power: 395 mW @ 125 MSPS**
- Differential input with 650 MHz bandwidth**
- On-chip voltage reference and sample-and-hold amplifier**
- DNL =  $\pm 0.15$  LSB**
- Flexible analog input: 1 V p-p to 2 V p-p range**
- Offset binary, Gray code, or twos complement data format**
- Clock duty cycle stabilizer**
- Data output clock**
- Serial port control**
  - Built-in selectable digital test pattern generation**
  - Programmable clock and data alignment**

### APPLICATIONS

- Ultrasound equipment**
- IF sampling in communications receivers**
  - IS-95, CDMA-One, IMT-2000**
- Battery-powered instruments**
- Hand-held scopemeters**
- Low cost digital oscilloscopes**

### GENERAL DESCRIPTION

The AD9233 is a monolithic, single 1.8 V supply, 12-bit, 80 MSPS/105 MSPS/125 MSPS analog-to-digital converter (ADC), featuring a high performance sample-and-hold amplifier (SHA) and on-chip voltage reference. The product uses a multistage differential pipeline architecture with output error correction logic to provide 12-bit accuracy at 125 MSPS data rates and guarantees no missing codes over the full operating temperature range.

The wide bandwidth, truly differential SHA allows a variety of user-selectable input ranges and offsets, including single-ended applications. It is suitable for multiplexed systems that switch full-scale voltage levels in successive channels and for sampling single-channel inputs at frequencies well beyond the Nyquist rate. Combined with power and cost savings over previously available ADCs, the AD9233 is suitable for applications in communications, imaging, and medical ultrasound.

A differential clock input controls all internal conversion cycles. A duty cycle stabilizer (DCS) compensates for wide variations in the clock duty cycle while maintaining excellent overall ADC performance.

#### Rev. A

Information furnished by Analog Devices is believed to be accurate and reliable. However, no responsibility is assumed by Analog Devices for its use, nor for any infringements of patents or other rights of third parties that may result from its use. Specifications subject to change without notice. No license is granted by implication or otherwise under any patent or patent rights of Analog Devices. Trademarks and registered trademarks are the property of their respective owners.

### FUNCTIONAL BLOCK DIAGRAM

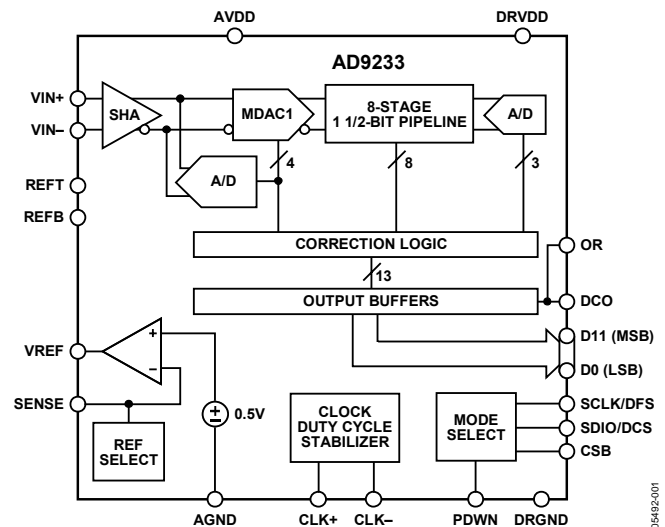


Figure 1.

The digital output data is presented in offset binary, Gray code, or twos complement formats. A data output clock (DCO) is provided to ensure proper latch timing with receiving logic.

The AD9233 is available in a 48-lead LFCSP and is specified over the industrial temperature range ( $-40^{\circ}\text{C}$  to  $+85^{\circ}\text{C}$ ).

### PRODUCT HIGHLIGHTS

1. The AD9233 operates from a single 1.8 V power supply and features a separate digital output driver supply to accommodate 1.8 V to 3.3 V logic families.
2. The patented SHA input maintains excellent performance for input frequencies up to 225 MHz.
3. The clock DCS maintains overall ADC performance over a wide range of clock pulse widths.
4. A standard serial port interface supports various product features and functions, such as data formatting (offset binary, twos complement, or Gray coding), enabling the clock DCS, power-down, and voltage reference mode.
5. The AD9233 is pin compatible with the AD9246, allowing a simple migration from 12 bits to 14 bits.

**TABLE OF CONTENTS**

|  |    |  |    |
|--|----|--|----|
| Features .....                                   | 1  | Timing .....   | 22 |
| Applications.....                                | 1  | Serial Port Interface (SPI).....                     | 23 |
| General Description .....                        | 1  | Configuration Using the SPI.....                     | 23 |
| Functional Block Diagram .....                   | 1  | Hardware Interface.....                              | 23 |
| Product Highlights .....                         | 1  | Configuration Without the SPI .....                  | 23 |
| Revision History .....                           | 3  | Memory Map .....                                     | 24 |
| Specifications.....                              | 4  | Reading the Memory Map Table.....                    | 24 |
| DC Specifications .....                          | 4  | Layout Considerations.....                           | 27 |
| AC Specifications.....                           | 5  | Power and Ground Recommendations .....               | 27 |
| Digital Specifications .....                     | 6  | CML .....  | 27 |
| Switching Specifications .....                   | 7  | RBIAS.....   | 27 |
| Timing Diagram .....                             | 7  | Reference Decoupling.....                            | 27 |
| Absolute Maximum Ratings.....                    | 8  | Evaluation Board .....                               | 28 |
| Thermal Resistance .....                         | 8  | Power Supplies.....                                  | 28 |
| ESD Caution.....                                 | 8  | Input Signals.....                                   | 28 |
| Pin Configuration and Function Descriptions..... | 9  | Output Signals .....                                 | 28 |
| Equivalent Circuits .....                        | 10 | Default Operation and Jumper Selection Settings..... | 29 |
| Typical Performance Characteristics .....        | 11 | Alternative Clock Configurations.....                | 29 |
| Theory of Operation .....                        | 15 | Alternative Analog Input Drive Configuration.....    | 30 |
| Analog Input Considerations.....                 | 15 | Schematics .....                                     | 31 |
| Voltage Reference .....                          | 17 | Evaluation Board Layouts .....                       | 36 |
| Clock Input Considerations .....                 | 18 | Bill of Materials (BOM).....                         | 39 |
| Jitter Considerations .....                      | 19 | Outline Dimensions .....                             | 42 |
| Power Dissipation and Standby Mode.....          | 20 | Ordering Guide .....                                 | 42 |
| Digital Outputs .....                            | 21 |  |    |

**REVISION HISTORY****8/06—Rev. 0 to Rev. A**

|   |           |
|---|-----------|
| Updated Format.....   | Universal |
| Added 80 MSPS .....   | Universal |
| Deleted Figure 19, Figure 20, Figure 22, and Figure 23;   |           |
| Renumbered Sequentially .....   | 11        |
| Deleted Figure 24, Figure 25, and Figure 27 to Figure 29;   |           |
| Renumbered Sequentially .....   | 12        |
| Deleted Figure 31 and Figure 34; Renumbered Sequentially ....                                     |           |
| Deleted Figure 37, Figure 38, Figure 40, and Figure 41;   |           |
| Renumbered Sequentially .....   | 14        |
| Deleted Figure 46; Renumbered Sequentially .....  |           |
| Deleted Figure 52; Renumbered Sequentially .....  | 16        |
| Changes to Figure 40 .....  |           |
| Changes to Figure 46 .....  | 18        |
| Inserted Figure 54; Renumbered Sequentially .....   |           |
| Changes to Digital Outputs Section .....  | 21        |
| Changes to Timing Section.....  | 22        |
| Added Data Clock Output (DCO) Section.....  |           |
| Changes to Configuration Using the SPI Section and<br>Configuration Without the SPI Section ..... | 23        |
| Changes to Table 15 .....   | 25        |
| Changes to Table 16 .....   | 39        |
| Changes to Ordering Guide.....  | 42        |

**4/06—Revision 0: Initial Version**

## SPECIFICATIONS

### DC SPECIFICATIONS

AVDD = 1.8 V; DRVDD = 2.5 V, maximum sample rate, 2 V p-p differential input, 1.0 V internal reference; AIN = -1.0 dBFS, DCS enabled, unless otherwise noted.

Table 1.

| Parameter                                    | Temp | AD9233BCPZ-80 |      |     | AD9233BCPZ-105 |      |     | AD9233BCPZ-125 |      |       | Unit    |    |
|--|------|---------------|------|-----|----------------|------|-----|----------------|------|-------|---------|----|
|  |      | Min           | Typ  | Max | Min            | Typ  | Max | Min            | Typ  | Max   |         |    |
| RESOLUTION                                   | Full | 12            |      |     | 12             |      |     | 12             |      |       | Bits    |    |
| ACCURACY                                     |      | Guaranteed    |      |     | Guaranteed     |      |     | Guaranteed     |      |       |         |    |
| No Missing Codes                             | Full | Guaranteed    |      |     | Guaranteed     |      |     | Guaranteed     |      |       |         |    |
| Offset Error                                 | Full | ±0.3          | ±0.5 |     | ±0.3           | ±0.8 |     | ±0.3           | ±0.8 | % FSR |         |    |
| Gain Error                                   | Full | ±0.2          | ±4.7 |     | ±0.2           | ±4.9 |     | ±0.2           | ±3.9 | % FSR |         |    |
| Differential Nonlinearity (DNL) <sup>1</sup> | Full |               | ±0.3 |     |                | ±0.5 |     |                | ±0.5 | LSB   |         |    |
|  | 25°C | ±0.2          |      |     | ±0.2           |      |     | ±0.2           |      | LSB   |         |    |
| Integral Nonlinearity (INL) <sup>1</sup>     | Full |               | ±1.2 |     |                | ±1.2 |     |                | ±1.2 | LSB   |         |    |
|  | 25°C | ±0.5          |      |     | ±0.5           |      |     | ±0.5           |      | LSB   |         |    |
| TEMPERATURE DRIFT                            |      |               |      |     |                |      |     |                |      |       |         |    |
| Offset Error                                 | Full | ±15           |      |     | ±15            |      |     | ±15            |      |       | ppm/°C  |    |
| Gain Error                                   | Full | ±95           |      |     | ±95            |      |     | ±95            |      |       | ppm/°C  |    |
| INTERNAL VOLTAGE REFERENCE                   |      |               |      |     |                |      |     |                |      |       |         |    |
| Output Voltage Error (1 V Mode)              | Full | ±5            | ±20  |     | ±5             | ±35  |     | ±5             | ±35  | mV    |         |    |
| Load Regulation @ 1.0 mA                     | Full | 7             |      |     | 7              |      |     | 7              |      |       | mV      |    |
| INPUT REFERRED NOISE                         |      |               |      |     |                |      |     |                |      |       |         |    |
| VREF = 1.0 V                                 | 25°C | 0.34          |      |     | 0.34           |      |     | 0.34           |      |       | LSB rms |    |
| ANALOG INPUT                                 |      |               |      |     |                |      |     |                |      |       |         |    |
| Input Span, VREF = 1.0 V                     | Full | 2             |      |     | 2              |      |     | 2              |      |       | V p-p   |    |
| Input Capacitance <sup>2</sup>               | Full | 8             |      |     | 8              |      |     | 8              |      |       | pF      |    |
| REFERENCE INPUT RESISTANCE                   | Full | 6             |      |     | 6              |      |     | 6              |      |       | kΩ      |    |
| POWER SUPPLIES                               |      |               |      |     |                |      |     |                |      |       |         |    |
| Supply Voltage                               |      |               |      |     |                |      |     |                |      |       |         |    |
| AVDD   | Full | 1.7           | 1.8  | 1.9 | 1.7            | 1.8  | 1.9 | 1.7            | 1.8  | 1.9   | V       |    |
| DRVDD  | Full | 1.7           | 3.3  | 3.6 | 1.7            | 3.3  | 3.6 | 1.7            | 3.3  | 3.6   | V       |    |
| Supply Current                               |      |               |      |     |                |      |     |                |      |       |         |    |
| IAVDD <sup>1</sup>                           | Full | 138           |      |     | 178            |      |     | 220            |      |       | 236     | mA |
| IDRVDD <sup>1</sup> (DRVDD = 1.8 V)          | Full | 7             |      |     | 8              |      |     | 10             |      |       | 17      | mA |
| IDRVDD <sup>1</sup> (DRVDD = 3.3 V)          | Full | 12            |      |     | 14             |      |     | 17             |      |       |         | mA |
| POWER CONSUMPTION                            |      |               |      |     |                |      |     |                |      |       |         |    |
| DC Input                                     | Full | 248           |      |     | 320            |      |     | 395            |      |       | 425     | mW |
| Sine Wave Input <sup>1</sup> (DRVDD = 1.8 V) | Full | 261           |      |     | 335            |      |     | 415            |      |       |         | mW |
| Sine Wave Input <sup>1</sup> (DRVDD = 3.3 V) | Full | 288           |      |     | 365            |      |     | 452            |      |       |         | mW |
| Standby <sup>3</sup>                         | Full | 40            |      |     | 40             |      |     | 40             |      |       |         | mW |
| Power-Down                                   | Full | 1.8           |      |     | 1.8            |      |     | 1.8            |      |       |         | mW |

<sup>1</sup> Measured with a low input frequency, full-scale sine wave, with approximately 5 pF loading on each output bit.

<sup>2</sup> Input capacitance refers to the effective capacitance between one differential input pin and AGND. Refer to Figure 4 for the equivalent analog input structure.

<sup>3</sup> Standby power is measured with a dc input, the CLK pin inactive (set to AVDD or AGND).

## AC SPECIFICATIONS

AVDD = 1.8 V; DRVDD = 2.5 V, maximum sample rate, 2 V p-p differential input, 1.0 V internal reference; AIN = -1.0 dBFS, DCS enabled, unless otherwise noted.

Table 2.

| Parameter <sup>1</sup>                          | Temp | AD9233BCPZ-80 |       |       | AD9233BCPZ-105 |       |       | AD9233BCPZ-125 |       |       | Unit |
|---|------|---------------|-------|-------|----------------|-------|-------|----------------|-------|-------|------|
|   |      | Min           | Typ   | Max   | Min            | Typ   | Max   | Min            | Typ   | Max   |      |
| SIGNAL-TO-NOISE-RATIO (SNR)                     |      |               |       |       |                |       |       |                |       |       |      |
| $f_{IN} = 2.4$ MHz                              | 25°C |               | 69.5  |       |                | 69.5  |       |                | 69.5  |       | dBc  |
| $f_{IN} = 70$ MHz                               | 25°C |               | 69.5  |       |                | 69.5  |       |                | 69.5  |       | dBc  |
|   | Full | 68.9          |       |       | 68.3           |       |       | 68.3           |       |       | dBc  |
| $f_{IN} = 100$ MHz                              | 25°C |               | 69.4  |       |                | 69.4  |       |                | 69.4  |       | dBc  |
| $f_{IN} = 170$ MHz                              | 25°C |               | 68.9  |       |                | 68.9  |       |                | 68.9  |       | dBc  |
| SIGNAL-TO-NOISE AND DISTORTION (SINAD)          |      |               |       |       |                |       |       |                |       |       |      |
| $f_{IN} = 2.4$ MHz                              | 25°C |               | 69.2  |       |                | 69.2  |       |                | 69.2  |       | dBc  |
| $f_{IN} = 70$ MHz                               | 25°C |               | 69.2  |       |                | 69.2  |       |                | 69.2  |       | dBc  |
|   | Full | 68.5          |       |       | 67.3           |       |       | 67.3           |       |       | dBc  |
| $f_{IN} = 100$ MHz                              | 25°C |               | 69.1  |       |                | 69.1  |       |                | 69.1  |       | dBc  |
| $f_{IN} = 170$ MHz                              | 25°C |               | 68.6  |       |                | 68.6  |       |                | 68.6  |       | dBc  |
| EFFECTIVE NUMBER OF BITS (ENOB)                 |      |               |       |       |                |       |       |                |       |       |      |
| $f_{IN} = 2.4$ MHz                              | 25°C |               | 11.4  |       |                | 11.4  |       |                | 11.4  |       | Bits |
| $f_{IN} = 70$ MHz                               | 25°C |               | 11.4  |       |                | 11.4  |       |                | 11.4  |       | Bits |
| $f_{IN} = 100$ MHz                              | 25°C |               | 11.4  |       |                | 11.4  |       |                | 11.4  |       | Bits |
| $f_{IN} = 170$ MHz                              | 25°C |               | 11.3  |       |                | 11.3  |       |                | 11.3  |       | Bits |
| WORST SECOND OR THIRD HARMONIC                  |      |               |       |       |                |       |       |                |       |       |      |
| $f_{IN} = 2.4$ MHz                              | 25°C |               | -90.0 |       |                | -90.0 |       |                | -90.0 |       | dBc  |
| $f_{IN} = 70$ MHz                               | 25°C |               | -85.0 |       |                | -85.0 |       |                | -85.0 |       | dBc  |
|   | Full |               |       | -76.0 |                |       | -73.0 |                |       | -73.0 | dBc  |
| $f_{IN} = 100$ MHz                              | 25°C |               | -85.0 |       |                | -85.0 |       |                | -85.0 |       | dBc  |
| $f_{IN} = 170$ MHz                              | 25°C |               | -83.5 |       |                | -83.5 |       |                | -83.5 |       | dBc  |
| SPURIOUS-FREE DYNAMIC RANGE (SFDR)              |      |               |       |       |                |       |       |                |       |       |      |
| $f_{IN} = 2.4$ MHz                              | 25°C |               | 90.0  |       |                | 90.0  |       |                | 90.0  |       | dBc  |
| $f_{IN} = 70$ MHz                               | 25°C |               | 85.0  |       |                | 85.0  |       |                | 85.0  |       | dBc  |
|   | Full | 76.0          |       |       | 73.0           |       |       | 73.0           |       |       | dBc  |
| $f_{IN} = 100$ MHz                              | 25°C |               | 85.0  |       |                | 85.0  |       |                | 85.0  |       | dBc  |
| $f_{IN} = 170$ MHz                              | 25°C |               | 83.5  |       |                | 83.5  |       |                | 83.5  |       | dBc  |
| WORST OTHER (HARMONIC OR SPUR)                  |      |               |       |       |                |       |       |                |       |       |      |
| $f_{IN} = 2.4$ MHz                              | 25°C |               | -90.0 |       |                | -90.0 |       |                | -90.0 |       | dBc  |
| $f_{IN} = 70$ MHz                               | 25°C |               | -90.0 |       |                | -90.0 |       |                | -90.0 |       | dBc  |
|   | Full |               |       | -85.0 |                |       | -81.0 |                |       | -81.0 | dBc  |
| $f_{IN} = 100$ MHz                              | 25°C |               | -90.0 |       |                | -90.0 |       |                | -90.0 |       | dBc  |
| $f_{IN} = 170$ MHz                              | 25°C |               | -90.0 |       |                | -90.0 |       |                | -90.0 |       | dBc  |
| TWO-TONE SFDR                                   |      |               |       |       |                |       |       |                |       |       |      |
| $f_{IN} = 30$ MHz (-7 dBFS), 31 MHz (-7 dBFS)   | 25°C |               | 87    |       |                | 87    |       |                | 85    |       | dBFS |
| $f_{IN} = 170$ MHz (-7 dBFS), 171 MHz (-7 dBFS) | 25°C |               | 83    |       |                | 83    |       |                | 84    |       | dBFS |
| ANALOG INPUT BANDWIDTH                          | 25°C |               | 650   |       |                | 650   |       |                | 650   |       | MHz  |

<sup>1</sup> See AN-835, *Understanding High Speed ADC Testing and Evaluation*, for a complete set of definitions.

# AD9233

## DIGITAL SPECIFICATIONS

AVDD = 1.8 V; DRVDD = 2.5 V, maximum sample rate, 2 V p-p differential input, 1.0 V internal reference; AIN = -1.0 dBFS, DCS enabled, unless otherwise noted.

Table 3.

| Parameter  | Temp | AD9233BCPZ-80/105/125 |     |             | Unit  |
|--|------|-----------------------|-----|-------------|-------|
|  |      | Min                   | Typ | Max         |       |
| DIFFERENTIAL CLOCK INPUTS (CLK+, CLK-)                                 |      |                       |     |             |       |
| Logic Compliance   |      | CMOS/LVDS/LVPECL      |     |             |       |
| Internal Common-Mode Bias  | Full |                       | 1.2 |             | V     |
| Differential Input Voltage   | Full | 0.2                   |     | 6           | V p-p |
| Input Voltage Range  | Full | AVDD - 0.3            |     | AVDD + 1.6  | V     |
| Input Common-Mode Range  | Full | 1.1                   |     | AVDD        | V     |
| High Level Input Voltage (V <sub>IH</sub> )                            | Full | 1.2                   |     | 3.6         | V     |
| Low Level Input Voltage (V <sub>IL</sub> )                             | Full | 0                     |     | 0.8         | V     |
| High Level Input Current (I <sub>IH</sub> )                            | Full | -10                   |     | +10         | μA    |
| Low Level Input Current (I <sub>IL</sub> )                             | Full | -10                   |     | +10         | μA    |
| Input Resistance   | Full | 8                     | 10  | 12          | kΩ    |
| Input Capacitance  | Full |                       | 4   |             | pF    |
| LOGIC INPUTS (SCLK/DFS, OE, PWDN)                                      |      |                       |     |             |       |
| High Level Input Voltage (V <sub>IH</sub> )                            | Full | 1.2                   |     | 3.6         | V     |
| Low Level Input Voltage (V <sub>IL</sub> )                             | Full | 0                     |     | 0.8         | V     |
| High Level Input Current (I <sub>IH</sub> )                            | Full | -50                   |     | -75         | μA    |
| Low Level Input Current (I <sub>IL</sub> )                             | Full | -10                   |     | +10         | μA    |
| Input Resistance   | Full |                       | 30  |             | kΩ    |
| Input Capacitance  | Full |                       | 2   |             | pF    |
| LOGIC INPUTS (CSB)   |      |                       |     |             |       |
| High Level Input Voltage (V <sub>IH</sub> )                            | Full | 1.2                   |     | 3.6         | V     |
| Low Level Input Voltage (V <sub>IL</sub> )                             | Full | 0                     |     | 0.8         | V     |
| High Level Input Current (I <sub>IH</sub> )                            | Full | -10                   |     | +10         | μA    |
| Low Level Input Current (I <sub>IL</sub> )                             | Full | +40                   |     | +135        | μA    |
| Input Resistance   | Full |                       | 26  |             | kΩ    |
| Input Capacitance  | Full |                       | 2   |             | pF    |
| LOGIC INPUTS (SDIO/DCS)  |      |                       |     |             |       |
| High Level Input Voltage (V <sub>IH</sub> )                            | Full | 1.2                   |     | DRVDD + 0.3 | V     |
| Low Level Input Voltage (V <sub>IL</sub> )                             | Full | 0                     |     | 0.8         | V     |
| High Level Input Current (I <sub>IH</sub> )                            | Full | -10                   |     | +10         | μA    |
| Low Level Input Current (I <sub>IL</sub> )                             | Full | +40                   |     | +130        | μA    |
| Input Resistance   | Full |                       | 26  |             | kΩ    |
| Input Capacitance  | Full |                       | 5   |             | pF    |
| DIGITAL OUTPUTS  |      |                       |     |             |       |
| DRVDD = 3.3 V  |      |                       |     |             |       |
| High Level Output Voltage (V <sub>OH</sub> , I <sub>OH</sub> = 50 μA)  | Full | 3.29                  |     |             | V     |
| High Level Output Voltage (V <sub>OH</sub> , I <sub>OH</sub> = 0.5 mA) | Full | 3.25                  |     |             | V     |
| Low Level Output Voltage (V <sub>OL</sub> , I <sub>OL</sub> = 1.6 mA)  | Full |                       |     | 0.2         | V     |
| Low Level Output Voltage (V <sub>OL</sub> , I <sub>OL</sub> = 50 μA)   | Full |                       |     | 0.05        | V     |
| DRVDD = 1.8 V  |      |                       |     |             |       |
| High Level Output Voltage (V <sub>OH</sub> , I <sub>OH</sub> = 50 μA)  | Full | 1.79                  |     |             | V     |
| High Level Output Voltage (V <sub>OH</sub> , I <sub>OH</sub> = 0.5 mA) | Full | 1.75                  |     |             | V     |
| Low Level Output Voltage (V <sub>OL</sub> , I <sub>OL</sub> = 1.6 mA)  | Full |                       |     | 0.2         | V     |
| Low Level Output Voltage (V <sub>OL</sub> , I <sub>OL</sub> = 50 μA)   | Full |                       |     | 0.05        | V     |

**SWITCHING SPECIFICATIONS**

AVDD = 1.8 V, DRVDD = 2.5 V, unless otherwise noted.

**Table 4.**

| Parameter <sup>1</sup>                           | Temp | AD9233BCPZ-80 |      |      | AD9233BCPZ-105 |      |      | AD9233BCPZ-125 |     |     | Unit   |
|--|------|---------------|------|------|----------------|------|------|----------------|-----|-----|--------|
|  |      | Min           | Typ  | Max  | Min            | Typ  | Max  | Min            | Typ | Max |        |
| <b>CLOCK INPUT PARAMETERS</b>                    |      |               |      |      |                |      |      |                |     |     |        |
| Conversion Rate, DCS Enabled                     | Full | 20            |      | 80   | 20             |      | 105  | 20             |     | 125 | MSPS   |
| Conversion Rate, DCS Disabled                    | Full | 10            |      | 80   | 10             |      | 105  | 10             |     | 125 | MSPS   |
| CLK Period                                       | Full | 12.5          |      |      | 9.5            |      |      | 8              |     |     | ns     |
| CLK Pulse Width High, DCS Enabled                | Full | 3.75          | 6.25 | 8.75 | 2.85           | 4.75 | 6.65 | 2.4            | 4   | 5.6 | ns     |
| CLK Pulse Width High, DCS Disabled               | Full | 5.63          | 6.25 | 6.88 | 4.28           | 4.75 | 5.23 | 3.6            | 4   | 4.4 | ns     |
| <b>DATA OUTPUT PARAMETERS</b>                    |      |               |      |      |                |      |      |                |     |     |        |
| Data Propagation Delay ( $t_{PD}$ ) <sup>2</sup> | Full | 3.1           | 3.9  | 4.8  | 3.1            | 3.9  | 4.8  | 3.1            | 3.9 | 4.8 | ns     |
| DCO Propagation Delay ( $t_{DCO}$ )              | Full |               | 4.4  |      |                | 4.4  |      |                | 4.4 |     | ns     |
| Setup Time ( $t_s$ )                             | Full | 4.9           | 5.7  |      | 3.4            | 4.3  |      | 2.6            | 3.5 |     | ns     |
| Hold Time ( $t_H$ )                              | Full | 5.9           | 6.8  |      | 4.4            | 5.3  |      | 3.7            | 4.5 |     | ns     |
| Pipeline Delay (Latency)                         | Full |               | 12   |      |                | 12   |      |                | 12  |     | cycles |
| Aperture Delay ( $t_A$ )                         | Full |               | 0.8  |      |                | 0.8  |      |                | 0.8 |     | ns     |
| Aperture Uncertainty (Jitter, $t_j$ )            | Full |               | 0.1  |      |                | 0.1  |      |                | 0.1 |     | ps rms |
| Wake-Up Time <sup>3</sup>                        | Full |               | 350  |      |                | 350  |      |                | 350 |     | ms     |
| <b>OUT-OF-RANGE RECOVERY TIME</b>                | Full |               | 2    |      |                | 2    |      |                | 3   |     | cycles |
| <b>SERIAL PORT INTERFACE<sup>4</sup></b>         |      |               |      |      |                |      |      |                |     |     |        |
| SCLK Period ( $t_{CLK}$ )                        | Full | 40            |      |      | 40             |      |      | 40             |     |     | ns     |
| SCLK Pulse Width High Time ( $t_{H1}$ )          | Full | 16            |      |      | 16             |      |      | 16             |     |     | ns     |
| SCLK Pulse Width Low Time ( $t_{L1}$ )           | Full | 16            |      |      | 16             |      |      | 16             |     |     | ns     |
| SDIO to SCLK Setup Time ( $t_{DS}$ )             | Full | 5             |      |      | 5              |      |      | 5              |     |     | ns     |
| SDIO to SCLK Hold Time ( $t_{DH}$ )              | Full | 2             |      |      | 2              |      |      | 2              |     |     | ns     |
| CSB to SCLK Setup Time ( $t_s$ )                 | Full | 5             |      |      | 5              |      |      | 5              |     |     | ns     |
| CSB to SCLK Hold Time ( $t_H$ )                  | Full | 2             |      |      | 2              |      |      | 2              |     |     | ns     |

<sup>1</sup> See AN-835, *Understanding High Speed ADC Testing and Evaluation*, for a complete set of definitions.  
<sup>2</sup> Output propagation delay is measured from CLK 50% transition to DATA 50% transition, with 5 pF load.  
<sup>3</sup> Wake-up time is dependant on the value of the decoupling capacitors, values shown with 0.1 μF capacitor across REFT and REFB.  
<sup>4</sup> See Figure 57 and the Serial Port Interface (SPI) section.

**TIMING DIAGRAM**

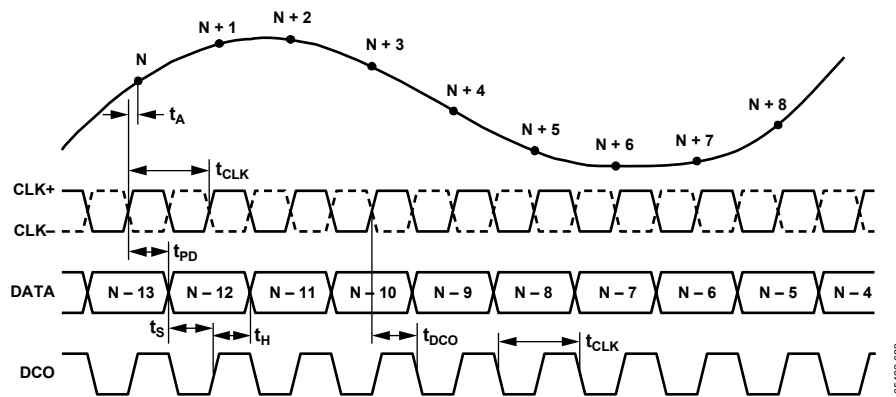


Figure 2. Timing Diagram

## ABSOLUTE MAXIMUM RATINGS

Table 5.

| Parameter                              | Rating                  |
|--|-------------------------|
| ELECTRICAL                             |                         |
| AVDD to AGND                           | -0.3 V to +2.0 V        |
| DRVDD to DRGND                         | -0.3 V to +3.9 V        |
| AGND to DRGND                          | -0.3 V to +0.3 V        |
| AVDD to DRVDD                          | -3.9 V to +2.0 V        |
| D0 through D11 to DRGND                | -0.3 V to DRVDD + 0.3 V |
| DCO to DRGND                           | -0.3 V to DRVDD + 0.3 V |
| OR to DRGND                            | -0.3 V to DRVDD + 0.3 V |
| CLK+ to AGND                           | -0.3 V to +3.9 V        |
| CLK- to AGND                           | -0.3 V to +3.9 V        |
| VIN+ to AGND                           | -0.3 V to AVDD + 1.3 V  |
| VIN- to AGND                           | -0.3 V to AVDD + 1.3 V  |
| VREF to AGND                           | -0.3 V to AVDD + 0.2 V  |
| SENSE to AGND                          | -0.3 V to AVDD + 0.2 V  |
| REFT to AGND                           | -0.3 V to AVDD + 0.2 V  |
| REFB to AGND                           | -0.3 V to AVDD + 0.2 V  |
| SDIO/DCS to DRGND                      | -0.3 V to DRVDD + 0.3 V |
| PDWN to AGND                           | -0.3 V to +3.9 V        |
| CSB to AGND                            | -0.3 V to +3.9 V        |
| SCLK/DFS to AGND                       | -0.3 V to +3.9 V        |
| OEB to AGND                            | -0.3 V to +3.9 V        |
| ENVIRONMENTAL                          |                         |
| Storage Temperature Range              | -65°C to +125°C         |
| Operating Temperature Range            | -40°C to +85°C          |
| Lead Temperature<br>(Soldering 10 Sec) | 300°C                   |
| Junction Temperature                   | 150°C                   |

Stresses above those listed under Absolute Maximum Ratings may cause permanent damage to the device. This is a stress rating only; functional operation of the device at these or any other conditions above those indicated in the operational section of this specification is not implied. Exposure to absolute maximum rating conditions for extended periods may affect device reliability.

### THERMAL RESISTANCE

The exposed paddle must be soldered to the ground plane for the LFCSP package. Soldering the exposed paddle to the customer board increases the reliability of the solder joints, maximizing the thermal capability of the package.

Table 6.

| Package Type            | $\theta_{JA}$ | $\theta_{JC}$ | Unit |
|-------------------------|---------------|---------------|------|
| 48-lead LFCSP (CP-48-3) | 26.4          | 2.4           | °C/W |

Typical  $\theta_{JA}$  and  $\theta_{JC}$  are specified for a 4-layer board in still air. Airflow increases heat dissipation, effectively reducing  $\theta_{JA}$ . In addition, metal in direct contact with the package leads from metal traces, and through holes, ground, and power planes, reduces the  $\theta_{JA}$ .

### ESD CAUTION

ESD (electrostatic discharge) sensitive device. Electrostatic charges as high as 4000 V readily accumulate on the human body and test equipment and can discharge without detection. Although this product features proprietary ESD protection circuitry, permanent damage may occur on devices subjected to high energy electrostatic discharges. Therefore, proper ESD precautions are recommended to avoid performance degradation or loss of functionality.





## PIN CONFIGURATION AND FUNCTION DESCRIPTIONS

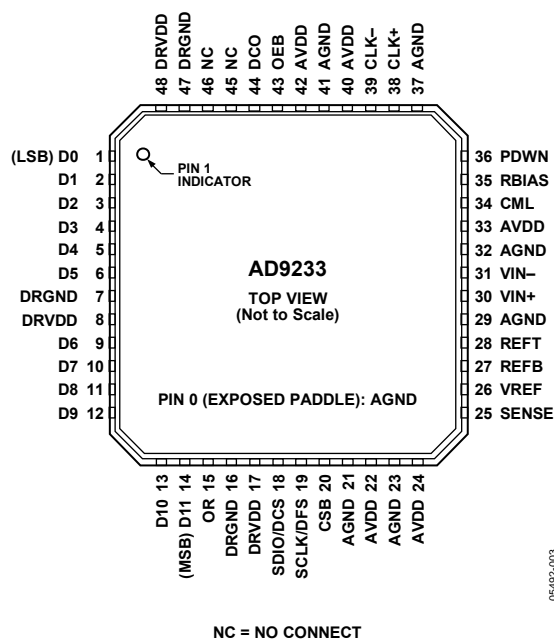


Figure 3. Pin Configuration

Table 7. Pin Function Description

| Pin No.                   | Mnemonic              | Description  |
|---------------------------|-----------------------|--|
| 0, 21, 23, 29, 32, 37, 41 | AGND                  | Analog Ground. (Pin 0 is the exposed thermal pad on the bottom of the package.)  |
| 1 to 6, 9 to 14           | D0 (LSB) to D11 (MSB) | Data Output Bits.  |
| 7, 16, 47                 | DRGND                 | Digital Output Ground.   |
| 8, 17, 48                 | DRVDD                 | Digital Output Driver Supply (1.8 V to 3.3 V).   |
| 15                        | OR                    | Out-of-Range Indicator.  |
| 18                        | SDIO/DCS              | Serial Port Interface (SPI) <sup>®</sup> Data Input/Output (Serial Port Mode); Duty Cycle Stabilizer Select (External Pin Mode). See Table 10. |
| 19                        | SCLK/DFS              | SPI Clock (Serial Port Mode); Data Format Select Pin (External Pin Mode). See Table 10.  |
| 20                        | CSB                   | SPI Chip Select (Active Low).  |
| 22, 24, 33, 40, 42        | AVDD                  | Analog Power Supply.   |
| 25                        | SENSE                 | Reference Mode Selection. See Table 9.   |
| 26                        | VREF                  | Voltage Reference Input/Output.  |
| 27                        | REF-                  | Differential Reference (-).  |
| 28                        | REF+                  | Differential Reference (+).  |
| 30                        | VIN+                  | Analog Input Pin (+).  |
| 31                        | VIN-                  | Analog Input Pin (-).  |
| 34                        | CML                   | Common-Mode Level Bias Output.   |
| 35                        | RBIAS                 | External Bias Resistor Connection. A 10 k $\Omega$ resistor must be connected between this pin and analog ground (AGND).                       |
| 36                        | PDWN                  | Power-Down Function Select.  |
| 38                        | CLK+                  | Clock Input (+).   |
| 39                        | CLK-                  | Clock Input (-).   |
| 43                        | OEB                   | Output Enable (Active Low).  |
| 44                        | DCO                   | Data Clock Output.   |
| 45, 46                    | NC                    | No Connection.   |

# EQUIVALENT CIRCUITS

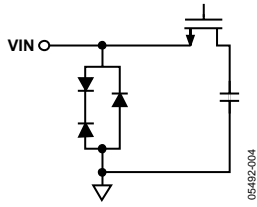


Figure 4. Equivalent Analog Input Circuit

05492-004

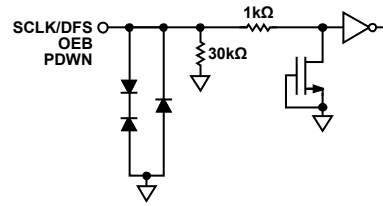


Figure 8. Equivalent SCLK/DFS, OEB, PDWN Input Circuit

05492-008

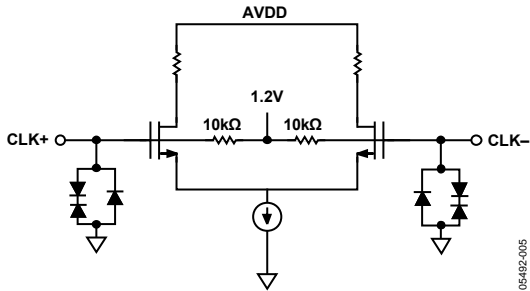


Figure 5. Equivalent Clock Input Circuit

05492-005

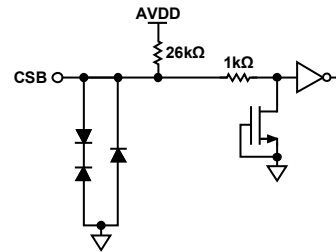


Figure 9. Equivalent CSB Input Circuit

05492-010

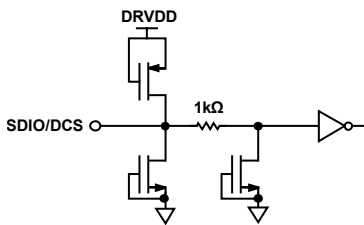


Figure 6. Equivalent SDIO/DCS Input Circuit

05492-006

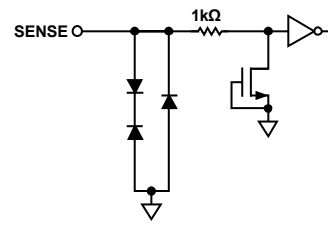


Figure 10. Equivalent SENSE Circuit

05492-011

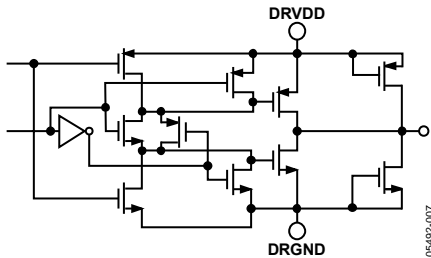


Figure 7. Equivalent Digital Output Circuit

05492-007

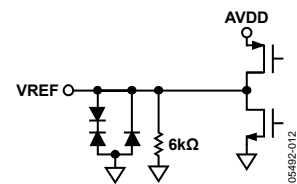


Figure 11. Equivalent VREF Circuit

05492-012

# TYPICAL PERFORMANCE CHARACTERISTICS

AVDD = 1.8 V; DRVDD = 2.5 V; maximum sample rate, DCS enabled, 1 V internal reference; 2 V p-p differential input; AIN = -1.0 dBFS; 64k sample; T<sub>A</sub> = 25°C, unless otherwise noted. All figures show typical performance for all speed grades.

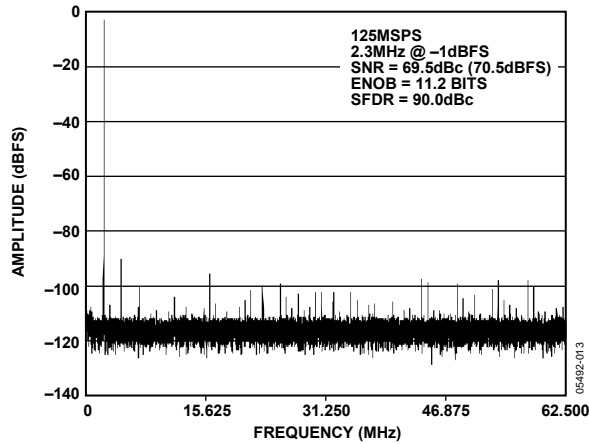


Figure 12. AD9233-125 Single-Tone FFT with  $F_{IN} = 2.3$  MHz

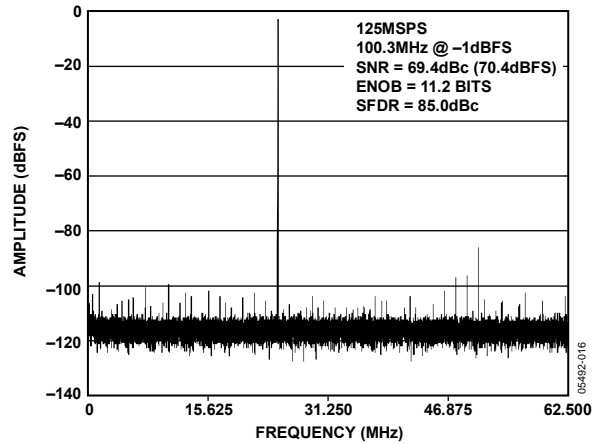


Figure 15. AD9233-125 Single-Tone FFT with  $F_{IN} = 100.3$  MHz

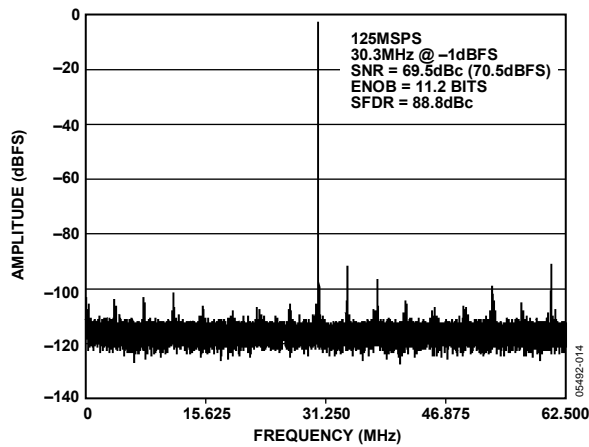


Figure 13. AD9233-125 Single-Tone FFT with  $F_{IN} = 30.3$  MHz

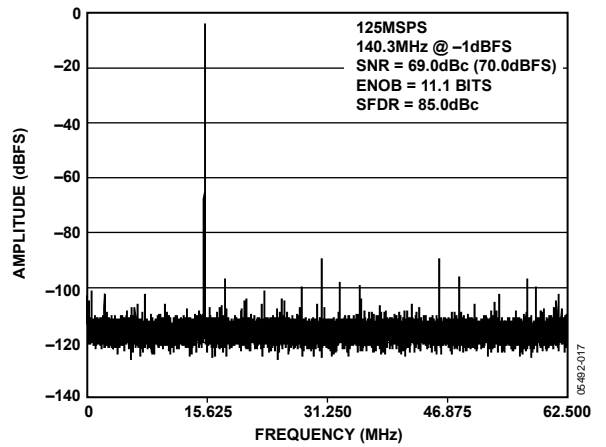


Figure 16. AD9233-125 Single-Tone FFT with  $F_{IN} = 140.3$  MHz

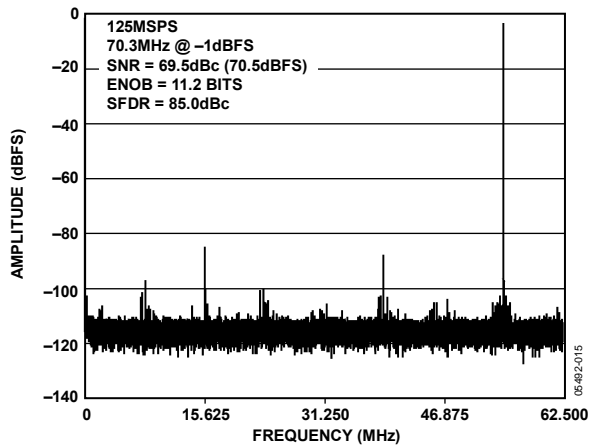


Figure 14. AD9233-125 Single-Tone FFT with  $F_{IN} = 70.3$  MHz

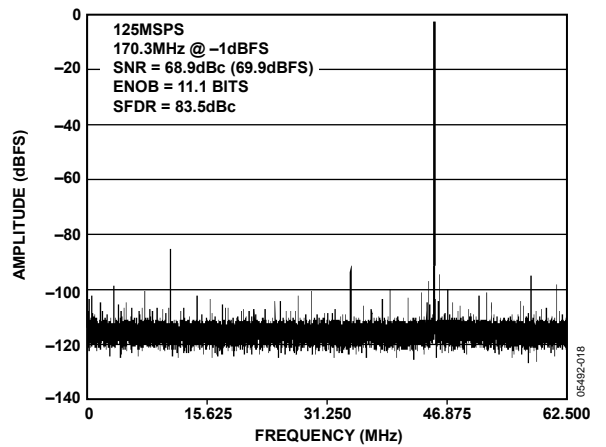


Figure 17. AD9233-125 Single-Tone FFT with  $F_{IN} = 170.3$  MHz

# AD9233

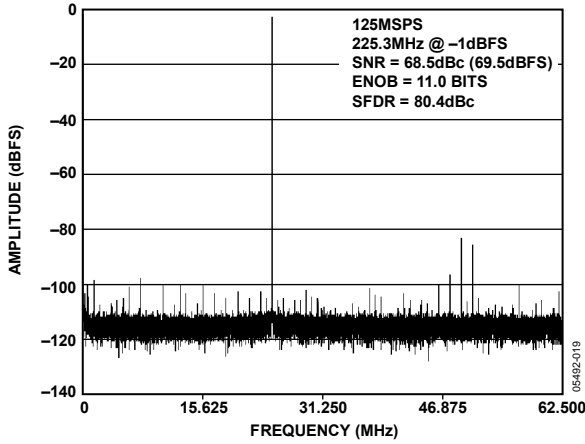


Figure 18. AD9233-125 Single-Tone FFT with  $F_{IN} = 225.3$  MHz

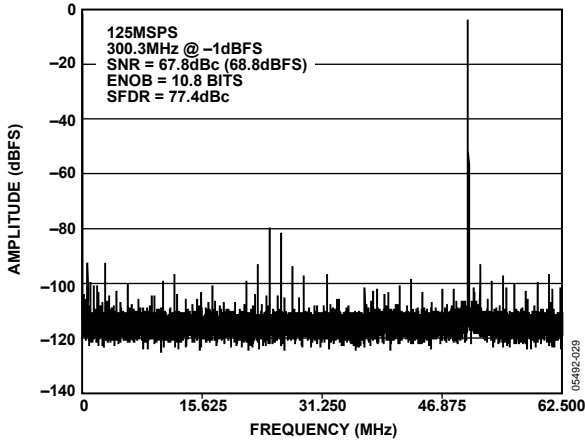


Figure 19. AD9233-125 Single-Tone FFT with  $F_{IN} = 300.3$  MHz

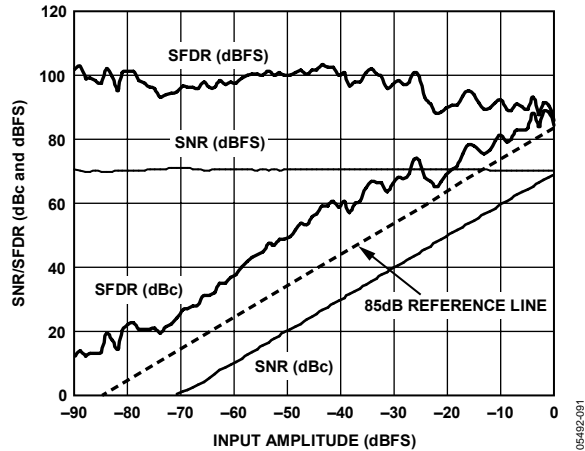


Figure 20. AD9233 Single-Tone SNR/SFDR vs. Input Amplitude ( $A_{IN}$ ) with  $F_{IN} = 2.4$  MHz

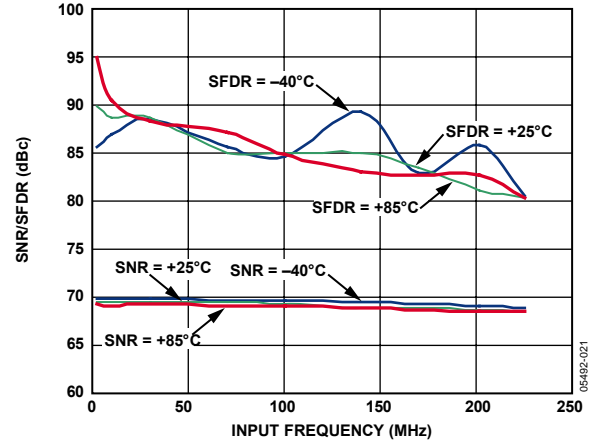


Figure 21. AD9233 Single-Tone SNR/SFDR vs. Input Frequency ( $F_{IN}$ ) and Temperature with 2 V p-p Full Scale

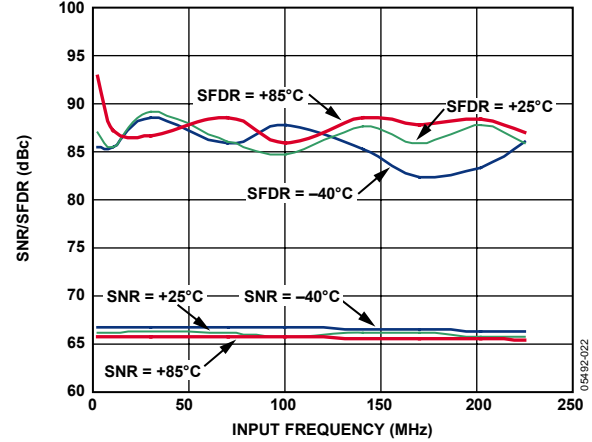


Figure 22. AD9233 Single-Tone SNR/SFDR vs. Input Frequency ( $F_{IN}$ ) and Temperature with 1 V p-p Full Scale

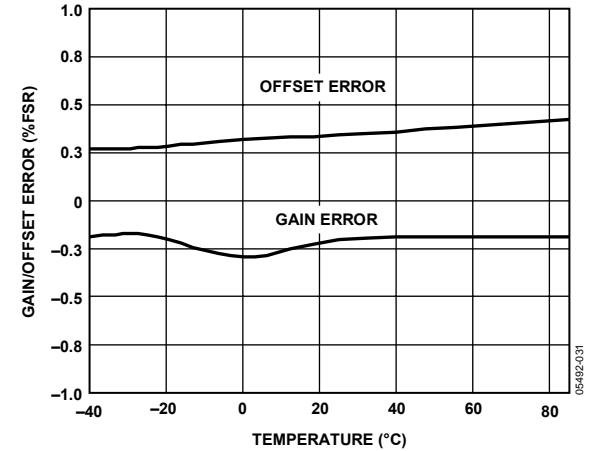


Figure 23. AD9233 Gain and Offset vs. Temperature

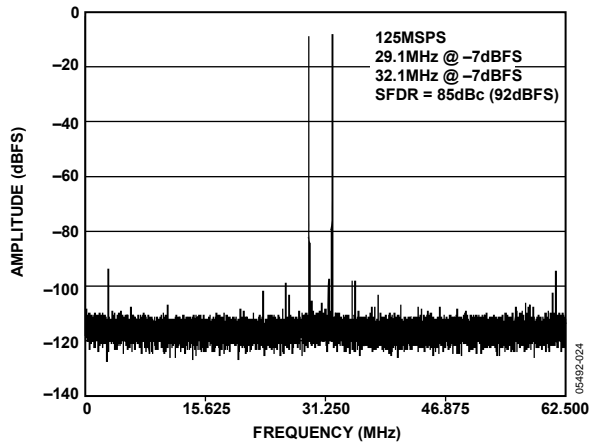


Figure 24. AD9233-125 Two-Tone FFT with  $F_{IN1} = 29.1$  MHz,  $F_{IN2} = 32.1$  MHz

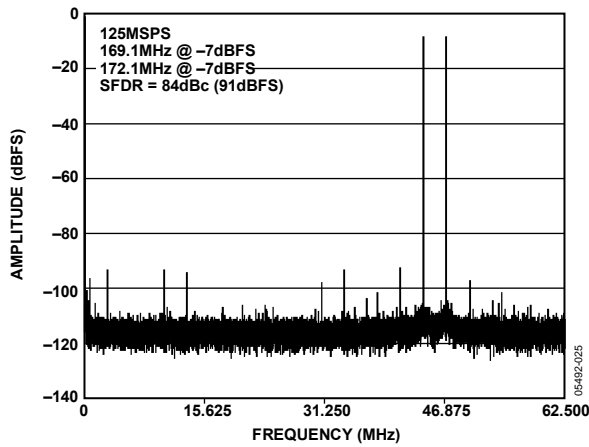


Figure 25. AD9233-125 Two-Tone FFT with  $F_{IN1} = 169.1$  MHz,  $F_{IN2} = 172.1$  MHz

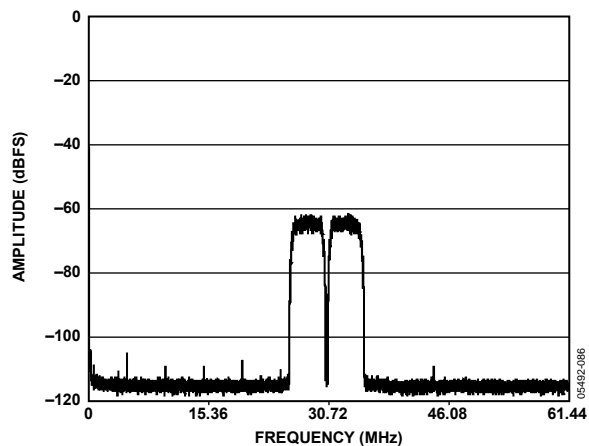


Figure 26. AD9233-125 Two 64k WCDMA Carriers with  $F_{IN} = 215.04$  MHz,  $F_S = 122.88$  MSPS

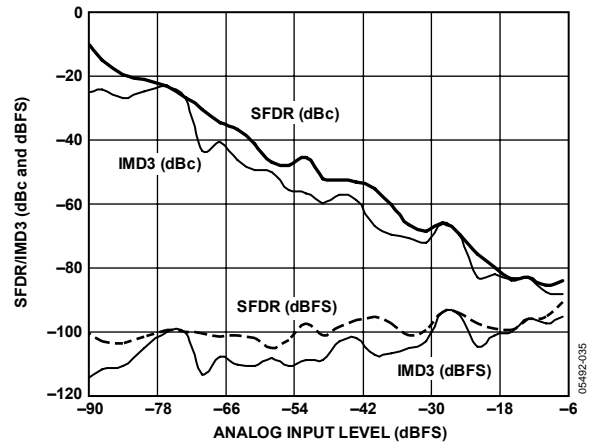


Figure 27. AD9233 Two-Tone SFDR/IMD vs. Input Amplitude ( $A_{IN}$ ) with  $F_{IN1} = 29.1$  MHz,  $F_{IN2} = 32.1$  MHz

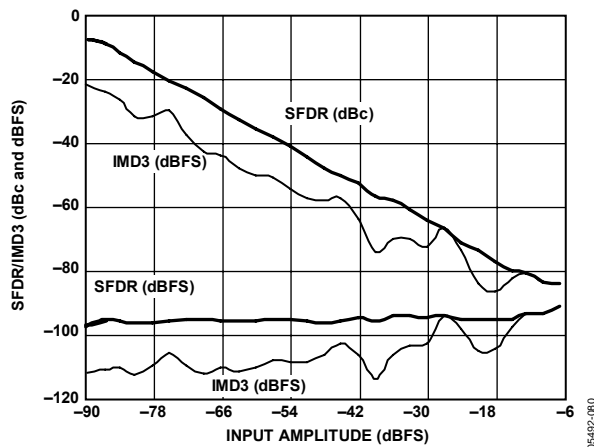


Figure 28. AD9233 Two-Tone SFDR/IMD vs. Input Amplitude ( $A_{IN}$ ) with  $F_{IN1} = 169.1$  MHz,  $F_{IN2} = 172.1$  MHz

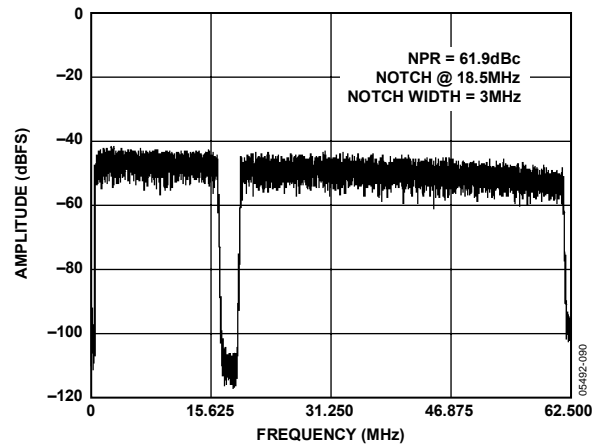


Figure 29. AD9233-125 Noise Power Ratio

# AD9233

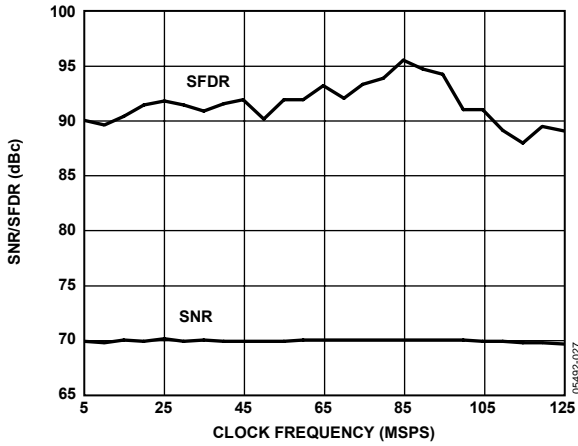


Figure 30. AD9233 Single-Tone SNR/SFDR vs. Clock Frequency ( $F_s$ ) with  $F_{IN} = 2.4$  MHz

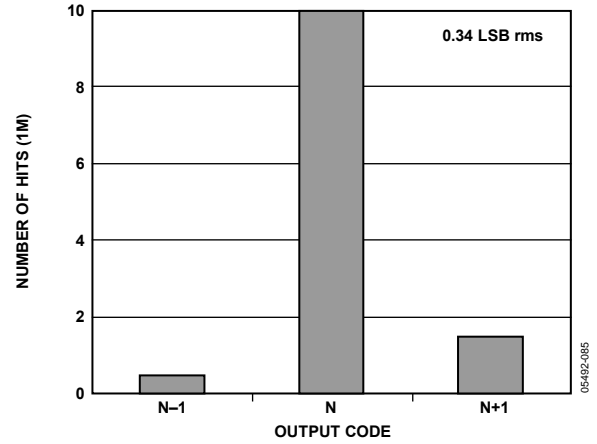


Figure 33. AD9233 Grounded Input Histogram

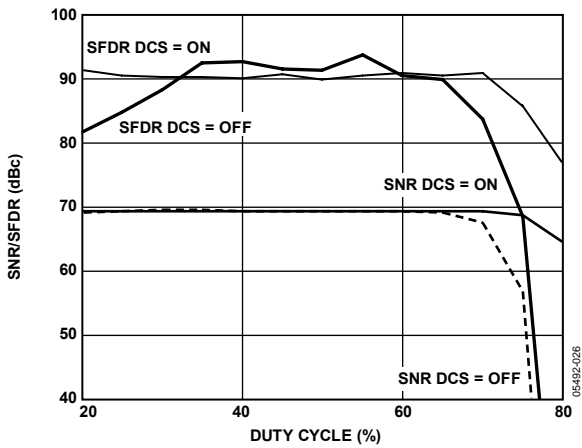


Figure 31. AD9233 SNR/SFDR vs. Duty Cycle with  $F_{IN} = 10.3$  MHz

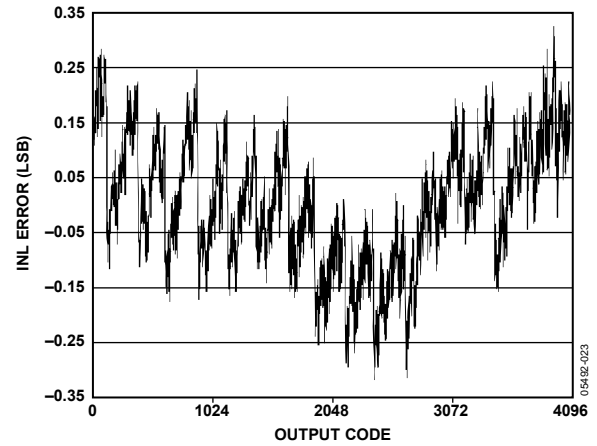


Figure 34. AD9233 INL with  $F_{IN} = 10.3$  MHz

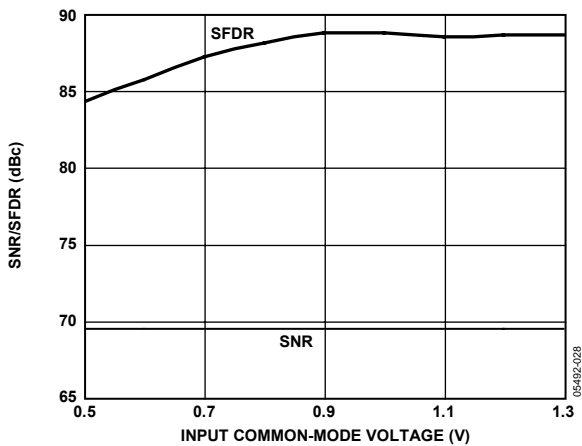


Figure 32. AD9233 SNR/SFDR vs. Input Common Mode ( $V_{CM}$ ) with  $F_{IN} = 30$  MHz

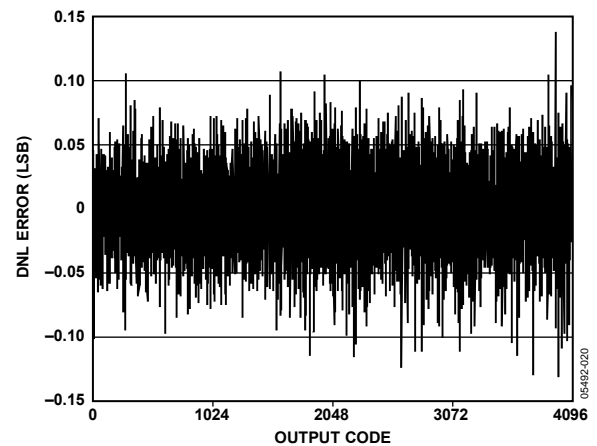


Figure 35. AD9233 DNL with  $F_{IN} = 10.3$  MHz

## THEORY OF OPERATION

The AD9233 architecture consists of a front-end SHA followed by a pipelined switched capacitor ADC. The quantized outputs from each stage are combined into a final 12-bit result in the digital correction logic. The pipelined architecture permits the first stage to operate on a new input sample, while the remaining stages operate on preceding samples. Sampling occurs on the rising edge of the clock.

Each stage of the pipeline, excluding the last, consists of a low resolution flash ADC connected to a switched capacitor DAC and interstage residue amplifier (MDAC). The residue amplifier magnifies the difference between the reconstructed DAC output and the flash input for the next stage in the pipeline. One bit of redundancy is used in each stage to facilitate digital correction of flash errors. The last stage simply consists of a flash ADC.

The input stage contains a differential SHA that can be ac- or dc-coupled in differential or single-ended modes. The output-staging block aligns the data, carries out the error correction, and passes the data to the output buffers. The output buffers are powered from a separate supply, allowing adjustment of the output voltage swing. During power-down, the output buffers proceed into a high impedance state.

### ANALOG INPUT CONSIDERATIONS

The analog input to the AD9233 is a differential switched capacitor SHA that has been designed for optimum performance while processing a differential input signal.

The clock signal alternately switches the SHA between sample mode and hold mode (see Figure 36). When the SHA is switched into sample mode, the signal source must be capable of charging the sample capacitors and settling within one-half of a clock cycle. A small resistor in series with each input can help reduce the peak transient current required from the output stage of the driving source.

A shunt capacitor can be placed across the inputs to provide dynamic charging currents. This passive network creates a low-pass filter at the ADC input; therefore, the precise values are dependant upon the application.

In IF undersampling applications, any shunt capacitors should be reduced. In combination with the driving source impedance, these capacitors limit the input bandwidth. See Application Notes [AN-742, Frequency Domain Response of Switched-Capacitor ADCs](#), and [AN-827, A Resonant Approach To Interfacing Amplifiers to Switched-Capacitor ADCs](#), and the *Analog Dialogue* article, “[Transformer-Coupled Front-End for Wideband A/D Converters](#)”, for more information.

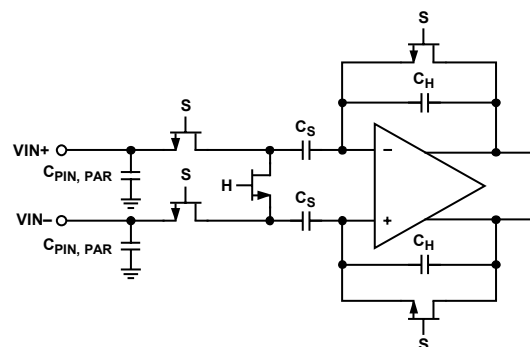


Figure 36. Switched-Capacitor SHA Input

For best dynamic performance, the source impedances driving VIN+ and VIN- should match such that common-mode settling errors are symmetrical. These errors are reduced by the common-mode rejection of the ADC.

An internal differential reference buffer creates two reference voltages used to define the input span of the ADC core. The span of the ADC core is set by the buffer to be  $2 \times V_{REF}$ . The reference voltages are not available to the user. Two bypass points, REFT and REFB, are brought out for decoupling to reduce the noise contributed by the internal reference buffer. It is recommended that REFT be decoupled to REFB by a  $0.1 \mu\text{F}$  capacitor, as described in the Layout Considerations section.

### Input Common Mode

The analog inputs of the AD9233 are not internally dc-biased. In ac-coupled applications, the user must provide this bias externally. Setting the device such that  $V_{CM} = 0.55 \times AV_{DD}$  is recommended for optimum performance; however, the device functions over a wider range with reasonable performance (see Figure 32). An on-board common-mode voltage reference is included in the design and is available from the CML pin. Optimum performance is achieved when the common-mode voltage of the analog input is set by the CML pin voltage (typically  $0.55 \times AV_{DD}$ ). The CML pin must be decoupled to ground by a  $0.1 \mu\text{F}$  capacitor, as described in the Layout Considerations section.

### Differential Input Configurations

Optimum performance is achieved by driving the AD9233 in a differential input configuration. For baseband applications, the [AD8138](#) differential driver provides excellent performance and a flexible interface to the ADC. The output common-mode voltage of the [AD8138](#) is easily set with the CML pin of the AD9233 (see Figure 37), and the driver can be configured in a Sallen-Key filter topology to provide band limiting of the input signal.

# AD9233

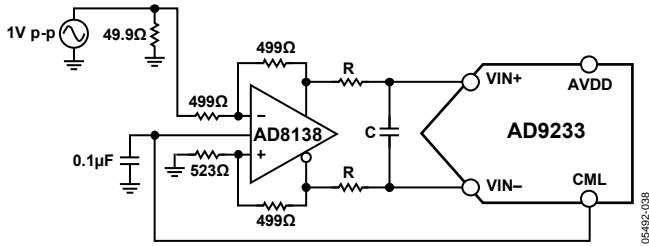


Figure 37. Differential Input Configuration Using the AD8138

For baseband applications where SNR is a key parameter, differential transformer coupling is the recommended input configuration. An example is shown in Figure 38. The CML voltage can be connected to the center tap of the secondary winding of the transformer to bias the analog input.

The signal characteristics must be considered when selecting a transformer. Most RF transformers saturate at frequencies below a few MHz, and excessive signal power can cause core saturation, which leads to distortion.

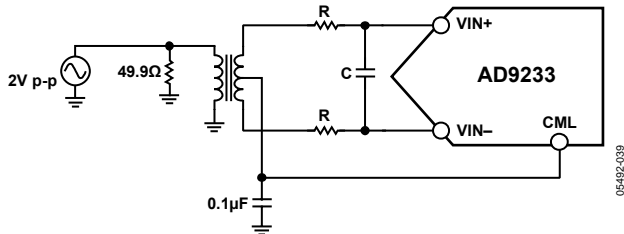


Figure 38. Differential Transformer-Coupled Configuration

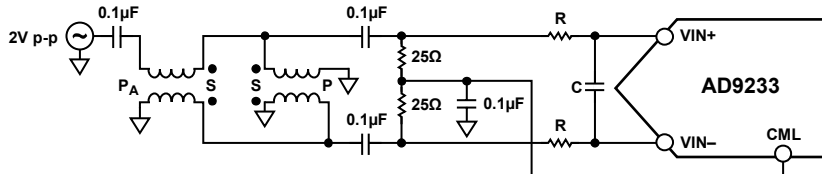


Figure 39. Differential Double Balun Input Configuration

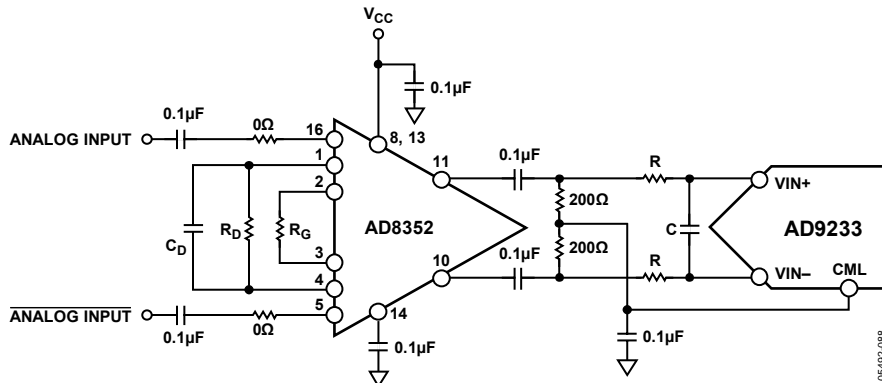


Figure 40. Differential Input Configuration Using the AD8352

At input frequencies in the second Nyquist zone and above, the noise performance of most amplifiers is not adequate to achieve the true SNR performance of the AD9233. For applications where SNR is a key parameter, transformer coupling is the recommended input. For applications where SFDR is a key parameter, differential double balun coupling is the recommended input configuration. An example is shown in Figure 39.

As an alternative to using a transformer-coupled input at frequencies in the second Nyquist zone, the AD8352 differential driver can be used. An example is shown in Figure 40.

In any configuration, the value of the shunt capacitor, C, is dependent on the input frequency and source impedance and may need to be reduced or removed. Table 8 displays recommended values to set the RC network. However, these values are dependant on the input signal and should only be used as a starting guide.

Table 8. RC Network Recommended Values

| Frequency Range (MHz) | R Series (Ω) | C Differential (pF) |
|-----------------------|--------------|---------------------|
| 0 to 70               | 33           | 15                  |
| 70 to 200             | 33           | 5                   |
| 200 to 300            | 15           | 5                   |
| >300                  | 15           | Open                |



### Single-Ended Input Configuration

Although not recommended, it is possible to operate the AD9233 in a single-ended input configuration, as long as the input voltage swing is within the AVDD supply. Single-ended operation can provide adequate performance in cost-sensitive applications. In this configuration, SFDR and distortion performance degrade due to the large input common-mode swing. If the source impedances on each input are matched, there should be little effect on SNR performance. Figure 41 details a typical single-ended input configuration.

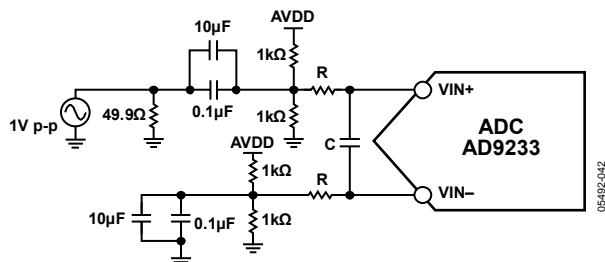


Figure 41. Single-Ended Input Configuration

### VOLTAGE REFERENCE

A stable and accurate voltage reference is built into the AD9233. The input range is adjustable by varying the reference voltage applied to the AD9233, using either the internal reference or an externally applied reference voltage. The input span of the ADC tracks reference voltage changes linearly. The various reference modes are summarized in the following sections. The Reference Decoupling section describes the best practices and requirements for PCB layout of the reference.

#### Internal Reference Connection

A comparator within the AD9233 detects the potential at the SENSE pin and configures the reference into four possible states, which are summarized in Table 9. If SENSE is grounded, the reference amplifier switch is connected to the internal resistor divider (see Figure 42), setting VREF to 1 V.

Connecting the SENSE pin to VREF switches the reference amplifier output to the SENSE pin, completing the loop and providing a 0.5 V reference output. If a resistor divider is connected external to the chip, as shown in Figure 43, the switch again sets to the SENSE pin.

This puts the reference amplifier in a noninverting mode with the VREF output defined as

$$V_{REF} = 0.5 \times \left( 1 + \frac{R_2}{R_1} \right)$$

If the SENSE pin is connected to the AVDD pin, the reference amplifier is disabled, and an external reference voltage can be applied to the VREF pin (see the External Reference Operation section).

The input range of the ADC always equals twice the voltage at the reference pin for either an internal or an external reference.

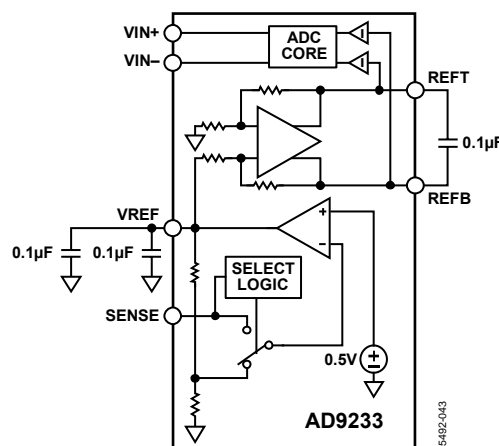


Figure 42. Internal Reference Configuration

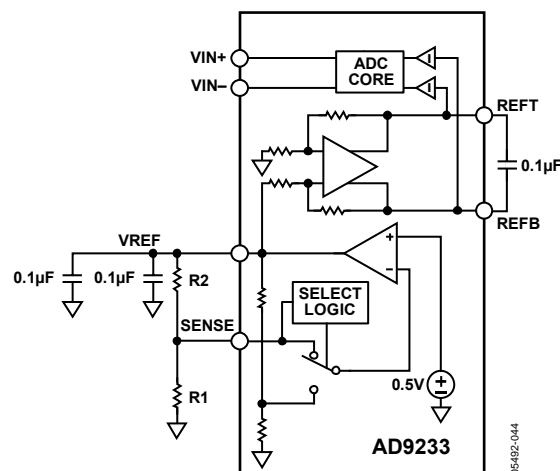


Figure 43. Programmable Reference Configuration

If the internal reference of the AD9233 is used to drive multiple converters to improve gain matching, the loading of the reference by the other converters must be considered. Figure 44 depicts how the internal reference voltage is affected by loading.

**Table 9. Reference Configuration Summary**

| Selected Mode            | SENSE Voltage | Resulting VREF (V)                       | Resulting Differential Span (V p-p) |
|--------------------------|---------------|--|-------------------------------------|
| External Reference       | AVDD          | N/A                                      | 2 × External Reference              |
| Internal Fixed Reference | VREF          | 0.5                                      | 1.0                                 |
| Programmable Reference   | 0.2 V to VREF | $0.5 \times (1 + R2/R1)$ (See Figure 43) | 2 × VREF                            |
| Internal Fixed Reference | AGND to 0.2 V | 1.0                                      | 2.0                                 |

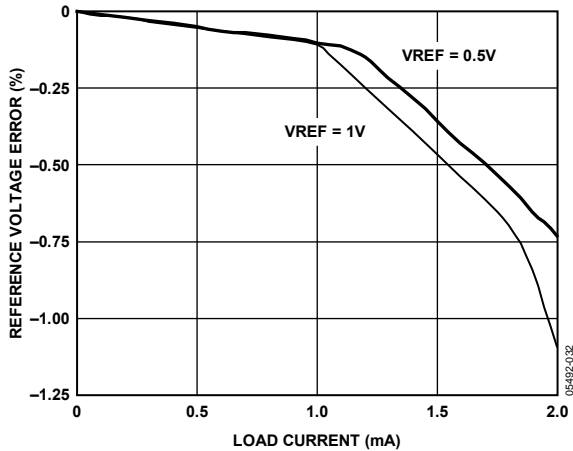


Figure 44. VREF Accuracy vs. Load

### External Reference Operation

The use of an external reference may be necessary to enhance the gain accuracy of the ADC or improve thermal drift characteristics. Figure 45 shows the typical drift characteristics of the internal reference in both 1 V and 0.5 V modes.

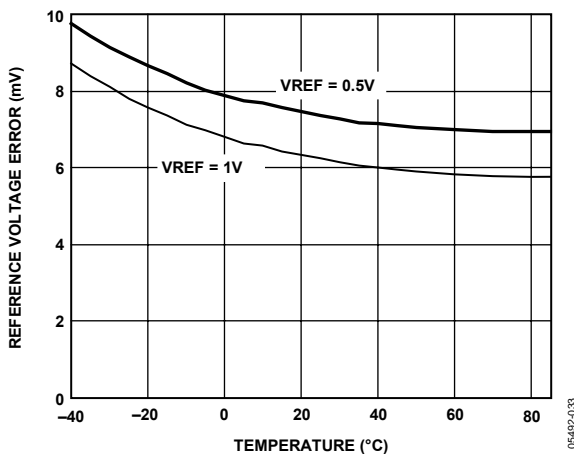


Figure 45. Typical VREF Drift

When the SENSE pin is tied to the AVDD pin, the internal reference is disabled, allowing the use of an external reference. An internal resistor divider loads the external reference with an equivalent 6 kΩ load (see Figure 11). In addition, an internal buffer generates the positive and negative full-scale references for the ADC core. Therefore, the external reference must be limited to a maximum of 1 V.

### CLOCK INPUT CONSIDERATIONS

For optimum performance, the AD9233 sample clock inputs (CLK+ and CLK-) should be clocked with a differential signal. The signal is typically ac-coupled into the CLK+ pin and the CLK- pin via a transformer or capacitors. These pins are biased internally (see Figure 5) and require no external bias.

#### Clock Input Options

The AD9233 has a very flexible clock input structure. The clock input can be a CMOS, LVDS, LVPECL, or sine wave signal. Regardless of the type of signal used, the jitter of the clock source is of the most concern, as described in the Jitter Considerations section.

Figure 46 shows one preferred method for clocking the AD9233. A low jitter clock source is converted from single-ended to a differential signal using an RF transformer. The back-to-back Schottky diodes across the transformer secondary limit clock excursions into the AD9233 to approximately 0.8 V p-p differential. This helps prevent the large voltage swings of the clock from feeding through to other portions of the AD9233 while preserving the fast rise and fall times of the signal, which are critical to a low jitter performance.

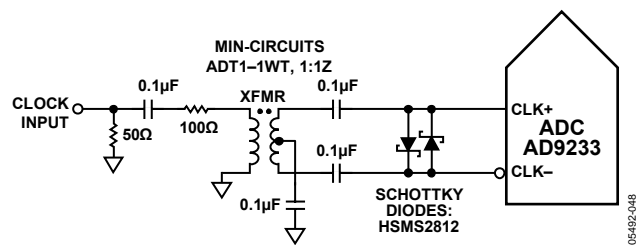
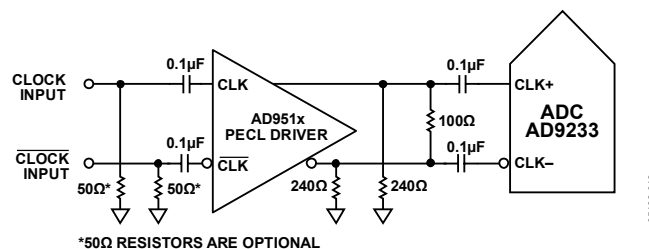


Figure 46. Transformer Coupled Differential Clock

If a low jitter clock source is not available, another option is to ac-couple a differential PECL signal to the sample clock input pins, as shown in Figure 47. The AD9510/AD9511/AD9512/AD9513/AD9514/AD9515 family of clock drivers offers excellent jitter performance.



\*50Ω RESISTORS ARE OPTIONAL

Figure 47. Differential PECL Sample Clock

A third option is to ac-couple a differential LVDS signal to the sample clock input pins, as shown in Figure 48. The AD9510/AD9511/AD9512/AD9513/AD9514/AD9515 family of clock drivers offers excellent jitter performance.

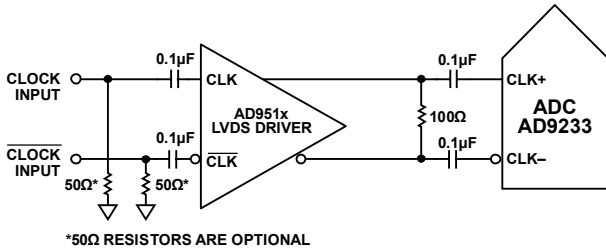


Figure 48. Differential LVDS Sample Clock

In some applications, it is acceptable to drive the sample clock inputs with a single-ended CMOS signal. In such applications, directly drive CLK+ from a CMOS gate, while bypassing the CLK- pin to ground with a 0.1 μF capacitor. Although the CLK+ input circuit supply is AVDD (1.8 V), this input is designed to withstand input voltages up to 3.6 V, making the selection of the drive logic voltage very flexible. When driving CLK+ with a 1.8 V CMOS signal, it is required to bias the CLK- pin with a 0.1 μF capacitor in parallel with a 39 kΩ resistor (see Figure 49). The 39 kΩ resistor is not required when driving CLK+ with a 3.3 V CMOS signal (see Figure 50).

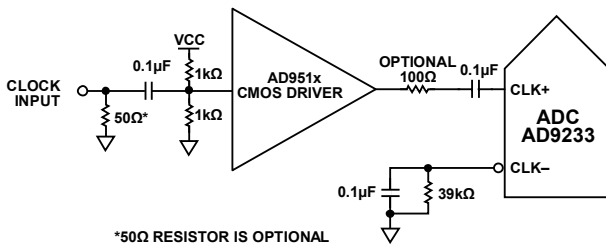


Figure 49. Single-Ended 1.8 V CMOS Sample Clock

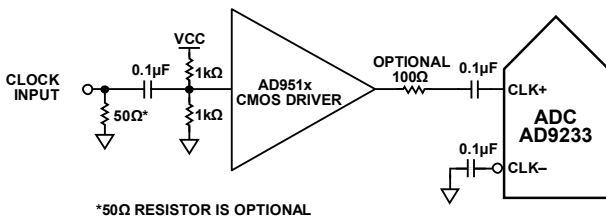


Figure 50. Single-Ended 3.3 V CMOS Sample Clock

**Clock Duty Cycle**

Typical high speed ADCs use both clock edges to generate a variety of internal timing signals. As a result, these ADCs may be sensitive to clock duty cycle. Commonly, a ±5% tolerance is required on the clock duty cycle to maintain dynamic performance characteristics.

The AD9233 contains a DCS that retimes the nonsampling, or falling edge, providing an internal clock signal with a nominal 50% duty cycle. This allows a wide range of clock input duty cycles without affecting the performance of the AD9233. Noise

and distortion performance are nearly flat for a wide range of duty cycles when the DCS is on, as shown in Figure 31.

Jitter in the rising edge of the input is still of paramount concern and is not reduced by the internal stabilization circuit. The duty cycle control loop does not function for clock rates less than 20 MHz nominally. The loop has a time constant associated with it that needs to be considered in applications where the clock rate can change dynamically, which requires a wait time of 1.5 μs to 5 μs after a dynamic clock frequency increase (or decrease) before the DCS loop is relocked to the input signal. During the time the loop is not locked, the DCS loop is bypassed, and the internal device timing is dependant on the duty cycle of the input clock signal. In such an application, it can be appropriate to disable the duty cycle stabilizer. In all other applications, enabling the DCS circuit is recommended to maximize ac performance.

The DCS can be enabled or disabled by setting the SDIO/DCS pin when operating in the external pin mode (see Table 10), or via the SPI, as described in the Table 15.

**Table 10. Mode Selection (External Pin Mode)**

| Voltage at Pin | SCLK/DFS         | SDIO/DCS              |
|----------------|------------------|-----------------------|
| AGND           | Binary (default) | DCS disabled          |
| AVDD           | Twos complement  | DCS enabled (default) |

**JITTER CONSIDERATIONS**

High speed, high resolution ADCs are sensitive to the quality of the clock input. The degradation in SNR at a given input frequency ( $F_{IN}$ ) due to jitter ( $t_j$ ) is calculated as

$$SNR = -20 \log (2\pi \times F_{IN} \times t_j)$$

In the equation, the rms aperture jitter ( $t_j$ ) represents the root-mean-square of all jitter sources, which include the clock input, analog input signal, and ADC aperture jitter specification. IF undersampling applications are particularly sensitive to jitter, as shown in Figure 51.

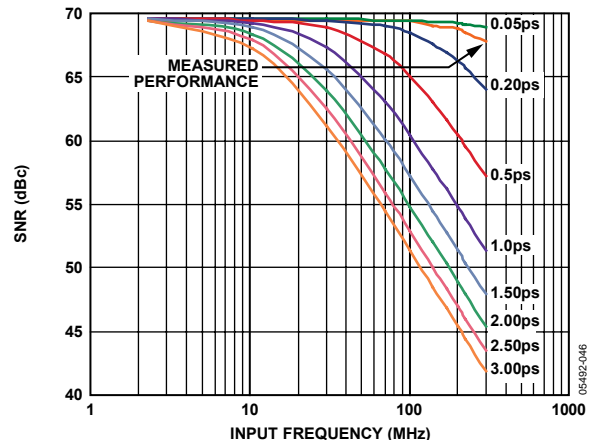


Figure 51. SNR vs. Input Frequency and Jitter

# AD9233

Treat the clock input as an analog signal in cases where aperture jitter may affect the dynamic range of the AD9233. Power supplies for clock drivers should be separated from the ADC output driver supplies to avoid modulating the clock signal with digital noise. The power supplies should also not be shared with analog input circuits such as buffers to avoid the clock modulating onto the input signal or vice versa. Low jitter, crystal-controlled oscillators make the best clock sources. If the clock is generated from another type of source (by gating, dividing, or other methods), it should be retimed by the original clock at the last step.

Refer to Application Notes [AN-501](#), *Aperture Uncertainty and ADC System Performance*, and [AN-756](#), *Sampled Systems and the Effects of Clock Phase Noise and Jitter* for more in-depth information about jitter performance as it relates to ADCs.

## POWER DISSIPATION AND STANDBY MODE

As shown in Figure 52 and Figure 53, the power dissipated by the AD9233 is proportional to its sample rate. The digital power dissipation is determined primarily by the strength of the digital drivers and the load on each output bit. The maximum DRVDD current ( $I_{DRVDD}$ ) can be calculated as

$$I_{DRVDD} = V_{DRVDD} \times C_{LOAD} \times \frac{f_{CLK}}{2} \times N$$

where  $N$  is the number of output bits (12 in the case of the AD9233).

This maximum current occurs when every output bit switches on every clock cycle, that is, a full-scale square wave at the Nyquist frequency,  $f_{CLK}/2$ . In practice, the DRVDD current is established by the average number of output bits switching, which is determined by the sample rate and the characteristics of the analog input signal. Reducing the capacitive load presented to the output drivers can minimize digital power consumption.

The data used for Figure 52 and Figure 53 is based on the same operating conditions as used in the plots in the Typical Performance Characteristics section with a 5 pF load on each output driver.

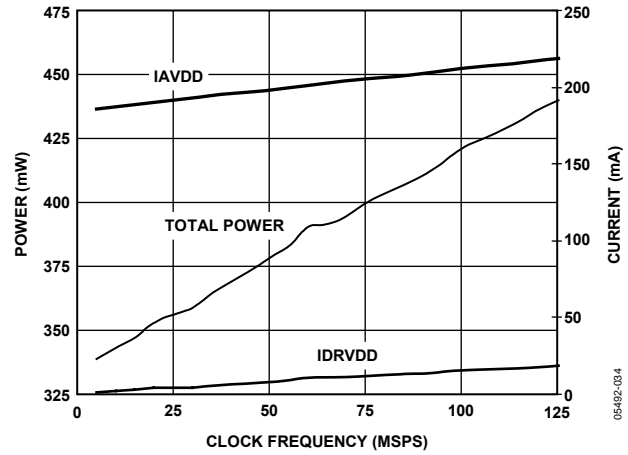


Figure 52. AD9233-125 Power and Current vs. Clock Frequency,  $F_{IN} = 30$  MHz

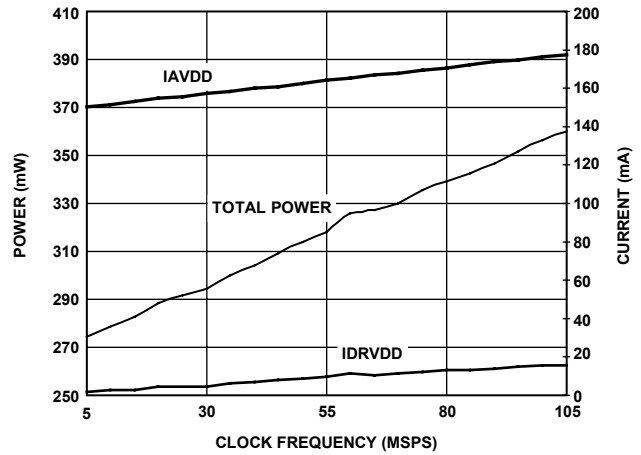


Figure 53. AD9233-105 Power and Current vs. Clock Frequency,  $F_{IN} = 30$  MHz

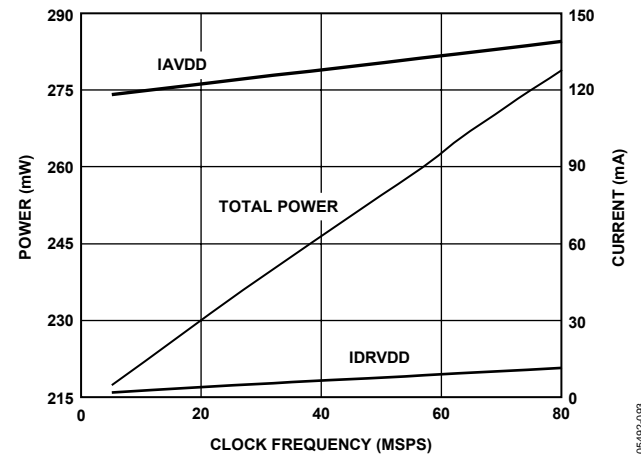


Figure 54. AD9233-80 Power and Current vs. Clock Frequency,  $F_{IN} = 30$  MHz

**Power-Down Mode**

By asserting the PDWN pin high, the AD9233 is placed in power-down mode. In this state, the ADC typically dissipates 1.8 mW. During power-down, the output drivers are placed in a high impedance state. Reasserting the PDWN pin low returns the AD9233 to its normal operational mode. This pin is both 1.8 V and 3.3 V tolerant.

Low power dissipation in power-down mode is achieved by shutting down the reference, reference buffer, biasing networks, and clock. The decoupling capacitors on REFT and REFB are discharged when entering power-down mode and then must be recharged when returning to normal operation. As a result, the wake-up time is related to the time spent in power-down mode; shorter power-down cycles result in proportionally shorter wake-up times. With the recommended 0.1 μF decoupling capacitor on REFT and REFB, it takes approximately 0.25 ms to fully discharge the reference buffer decoupling capacitor and 0.35 ms to restore full operation.

**Standby Mode**

When using the SPI port interface, the user can place the ADC in power-down or standby modes. Standby mode allows the user to keep the internal reference circuitry powered when faster wake-up times are required. See the Memory Map section for more details.

**DIGITAL OUTPUTS**

The AD9233 output drivers can be configured to interface with 1.8 V to 3.3 V logic families by matching DRVDD to the digital supply of the interfaced logic. The output drivers are sized to provide sufficient output current to drive a wide variety of logic families. However, large drive currents tend to cause current glitches on the supplies that can affect converter performance. Applications requiring the ADC to drive large capacitive loads or large fanouts can require external buffers or latches.

The output data format can be selected for either offset binary or twos complement by setting the SCLK/DFS pin when operating in the external pin mode (see Table 10). As detailed in the *Interfacing to High Speed ADCs via SPI User Manual*, the data format can be selected for either offset binary, twos complement, or Gray code when using the SPI control.

**Table 12. Output Data Format**

| Condition (V)                                    | Binary Output Mode | Twos Complement Mode | Gray Code Mode (SPI Accessible) | OR |
|--|--------------------|----------------------|---------------------------------|----|
| $V_{IN+} - V_{IN-} < -V_{REF} - 0.5 \text{ LSB}$ | 0000 0000 0000     | 1000 0000 0000       | 1100 0000 0000                  | 1  |
| $V_{IN+} - V_{IN-} = -V_{REF}$                   | 0000 0000 0000     | 1000 0000 0000       | 1100 0000 0000                  | 0  |
| $V_{IN+} - V_{IN-} = 0$                          | 1000 0000 0000     | 0000 0000 0000       | 0000 0000 0000                  | 0  |
| $V_{IN+} - V_{IN-} = +V_{REF} - 1.0 \text{ LSB}$ | 1111 1111 1111     | 0111 1111 1111       | 1000 0000 0000                  | 0  |
| $V_{IN+} - V_{IN-} > +V_{REF} - 0.5 \text{ LSB}$ | 1111 1111 1111     | 0111 1111 1111       | 1000 0000 0000                  | 1  |

**Out-of-Range (OR) Condition**

An out-of-range condition exists when the analog input voltage is beyond the input range of the ADC. OR is a digital output that is updated along with the data output corresponding to the particular sampled input voltage. Thus, OR has the same pipeline latency as the digital data.

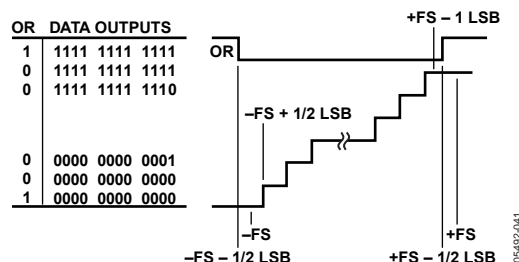


Figure 55. OR Relation to Input Voltage and Output Data

OR is low when the analog input voltage is within the analog input range and high when the analog input voltage exceeds the input range, as shown in Figure 55. OR remains high until the analog input returns to within the input range and another conversion is completed. By logically AND'ing the OR bit with the MSB and its complement, overrange high or underrange low conditions can be detected. Table 11 is a truth table for the overrange/underrange circuit in Figure 56, which uses NAND gates.

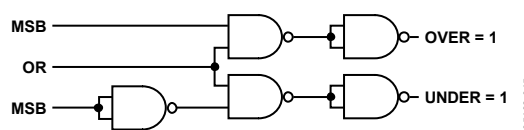


Figure 56. Overrange/Underrange Logic

**Table 11. Overrange/Underrange Truth Table**

| OR | MSB | Analog Input Is: |
|----|-----|------------------|
| 0  | 0   | Within Range     |
| 0  | 1   | Within Range     |
| 1  | 0   | Underrange       |
| 1  | 1   | Overrange        |

**Digital Output Enable Function (OEB)**

The AD9233 has three-state ability. If the OEB pin is low, the output data drivers are enabled. If the OEB pin is high, the output data drivers are placed in a high impedance state. This is not intended for rapid access to the data bus. Note that OEB is referenced to the digital supplies (DRVDD) and should not exceed that supply voltage.

## **TIMING**

The lowest typical conversion rate of the AD9233 is 10 MSPS. At clock rates below 10 MSPS, dynamic performance can degrade.

The AD9233 provides latched data outputs with a pipeline delay of 12 clock cycles. Data outputs are available one propagation delay ( $t_{PD}$ ) after the rising edge of the clock signal.

The length of the output data lines and the loads placed on them should be minimized to reduce transients within the AD9233. These transients can degrade the dynamic performance of the converter.

## ***Data Clock Output (DCO)***

The AD9233 provides a data clock output (DCO) intended for capturing the data in an external register. The data outputs are valid on the rising edge of DCO, unless the DCO clock polarity has been changed via the SPI. See Figure 2 for a graphical timing description.

## SERIAL PORT INTERFACE (SPI)

The AD9233 SPI allows the user to configure the converter for specific functions or operations through a structured register space provided inside the ADC. This provides the user added flexibility and customization depending on the application. Addresses are accessed via the serial port and can be written to or read from via the port. Memory is organized into bytes that are further divided into fields, as documented in the Memory Map section. For detailed operational information, see the [Interfacing to High Speed ADCs via SPI User Manual](#).

### CONFIGURATION USING THE SPI

As summarized in Table 13, three pins define the SPI of this ADC. The SCLK/DFS pin synchronizes the read and write data presented to the ADC. The SDIO/DCS dual-purpose pin allows data to be sent and read from the internal ADC memory map registers. The CSB pin is an active low control that enables or disables the read and write cycles.

**Table 13. Serial Port Interface Pins**

| Mnemonic | Description  |
|----------|--|
| SCLK/DFS | SCLK (Serial Clock) is the serial shift clock in. SCLK synchronizes serial interface reads and writes.   |
| SDIO/DCS | SDIO (Serial Data Input/Output) is a dual-purpose pin. The typical role for this pin is an input and output depending on the instruction being sent and the relative position in the timing frame. |
| CSB      | CSB (Chip Select Bar) is an active low control that gates the read and write cycles.   |

The falling edge of the CSB in conjunction with the rising edge of the SCLK determines the start of the framing. Figure 57 and Table 14 provide an example of the serial timing and its definitions.

Other modes involving the CSB are available. The CSB can be held low indefinitely, permanently enabling the device (this is called streaming). The CSB can stall high between bytes to allow for additional external timing. When CSB is tied high during power up, SPI functions are placed in a high impedance mode. This mode turns on any SPI pin secondary functions. If CSB is high at power up and then brought low to activate the SPI, the SPI pin secondary functions are no longer available, unless the device power is cycled.

During an instruction phase, a 16-bit instruction is transmitted. Data follows the instruction phase and the length is determined by the W0 bit and the W1 bit. All data is composed of 8-bit words. The first bit of each individual byte of serial data indicates whether a read or write command is issued. This allows the serial data input/output (SDIO) pin to change direction from an input to an output.

In addition to word length, the instruction phase determines if the serial frame is a read or write operation, allowing the serial port to be used to both program the chip as well as read the contents of the on-chip memory. If the instruction is a readback operation, performing a readback causes the serial data input/output (SDIO) pin to change direction from an input to an output at the appropriate point in the serial frame.

Data can be sent in MSB first or in LSB first mode. MSB first is the default on power up and can be changed via the configuration register. For more information, see the [Interfacing to High Speed ADCs via SPI User Manual](#).

**Table 14. SPI Timing Diagram Specifications**

| Name             | Description  |
|------------------|--|
| t <sub>DS</sub>  | Setup time between data and rising edge of SCLK          |
| t <sub>DH</sub>  | Hold time between data and rising edge of SCLK           |
| t <sub>CLK</sub> | Period of the clock                                      |
| t <sub>S</sub>   | Setup time between CSB and SCLK                          |
| t <sub>H</sub>   | Hold time between CSB and SCLK                           |
| t <sub>HI</sub>  | Minimum period that SCLK should be in a logic high state |
| t <sub>LO</sub>  | Minimum period that SCLK should be in a logic low state  |

### HARDWARE INTERFACE

The pins described in Table 13 comprise the physical interface between the user's programming device and the serial port of the AD9233. The SCLK and CSB pins function as inputs when using the SPI interface. The SDIO pin is bidirectional, functioning as an input during write phases and as an output during readback.

The SPI interface is flexible enough to be controlled by either PROM or PIC microcontrollers. This provides the user with the ability to use an alternate method to program the ADC. One method is described in detail in the Application Note [AN-812](#).

When the SPI interface is not used, some pins serve a dual function. When strapped to AVDD or ground during device power on, the pins are associated with a specific function.

### CONFIGURATION WITHOUT THE SPI

In applications that do not interface to the SPI control registers, the SDIO/DCS and SCLK/DFS pins serve as standalone CMOS-compatible control pins. When the device is powered up with the CSB chip select connected to AVDD, the serial port interface is disabled. In this mode, it is assumed that the user intends to use the pins as static control lines for the output data format and duty cycle stabilizer (see Table 10). For more information, see the [Interfacing to High Speed ADCs via SPI User Manual](#).

## MEMORY MAP

### READING THE MEMORY MAP TABLE

Each row in the memory map table has eight address locations. The memory map is roughly divided into three sections: chip configuration registers map (Address 0x00 to Address 0x02), device index and transfer registers map (Address 0xFF), and ADC functions map (Address 0x08 to Address 0x18).

The memory map register in Table 15 displays the register address number in hexadecimal in the first column. The last column displays the default value for each hexadecimal address. The Bit 7 (MSB) column is the start of the default hexadecimal value given. For example, Hexadecimal Address 0x14, output\_phase has a hexadecimal default value of 0x00. This means Bit 3 = 0, Bit 2 = 0, Bit 1 = 1, and Bit 0 = 1 or 0011 in binary. This setting is the default output clock or DCO phase adjust option. The default value adjusts the DCO phase 90° relative to the nominal DCO edge and 180° relative to the data edge. For more information on this function, consult the [Interfacing to High Speed ADCs via SPI User Manual](#).

### Open Locations

Locations marked as open are currently not supported for this device. When required, these locations should be written with 0s. Writing to these locations is required only when part of an address location is open (for example, Address 0x14). If the entire address location is open (Address 0x13), then the address location does not need to be written.

### Default Values

Coming out of reset, critical registers are loaded with default values. The default values for the registers are provided in Table 15.

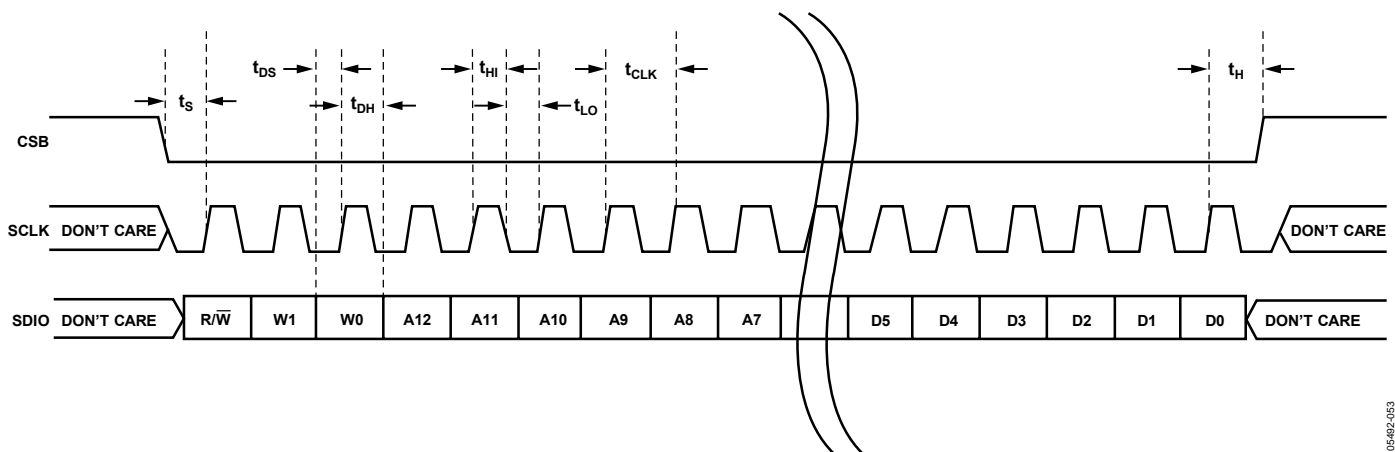


Figure 57. Serial Port Interface Timing Diagram

### Logic Levels

An explanation of two registers follows:

- Bit is set is synonymous with bit is set to Logic 1 or writing Logic 1 for the bit.
- Clear a bit is synonymous with bit is set to Logic 0 or writing Logic 0 for the bit.

### SPI-Accessible Features

A list of features accessible via the SPI and a brief description of what the user can do with these features follows. These features are described in detail in the [Interfacing to High Speed ADCs via SPI User Manual](#).

- **Modes:** Set either power-down or standby mode.
- **Clock:** Access the DCS via the SPI.
- **Offset:** Digitally adjust the converter offset.
- **Test I/O:** Set test modes to have known data on output bits.
- **Output Mode:** Setup outputs, vary the strength of the output drivers.
- **Output Phase:** Set the output clock polarity.
- **VREF:** Set the reference voltage.



Table 15. Memory Map Register

| Addr (Hex)                                 | Parameter Name   | Bit 7 (MSB)  | Bit 6                                    | Bit 5  | Bit 4 | Bit 3                                     | Bit 2   | Bit 1                                    | Bit 0 (LSB)                                      | Default Value (Hex)  | Default Notes/Comments   |
|--|------------------|--|--|--|-------|---|---|--|--|--|--|
| <b>Chip Configuration Registers</b>        |                  |  |  |  |       |   |   |  |  |  |  |
| 00   | chip_port_config | 0  | LSB First<br>0 = Off (Default)<br>1 = On | Soft Reset<br>0 = Off (Default)<br>1 = On  | 1     | 1   | Soft Reset<br>0 = Off (Default)<br>1 = On   | LSB First<br>0 = Off (Default)<br>1 = On | 0  | 0x18   | The nibbles should be mirrored. See <a href="#">Interfacing to High Speed ADCs via SPI User Manual</a> . |
| 01   | chip_id          | 8-Bit Chip ID Bits 7:0<br>(AD9233 = 0x00), (Default) |  |  |       |   |   |  |  | Read-Only  | Default is unique chip ID, different for each device.  |
| 02   | chip_grade       | Open   | Open                                     | Open   | Open  | Child ID<br>0 = 125 MSPS,<br>1 = 105 MSPS | Open  | Open                                     | Open   | Read-Only  | Child ID used to differentiate speed grades.   |
| <b>Device Index and Transfer Registers</b> |                  |  |  |  |       |   |   |  |  |  |  |
| FF   | device_update    | Open   | Open                                     | Open   | Open  | Open                                      | Open  | Open                                     | SW Transfer                                      | 0x00   | Synchronously transfers data from the master shift register to the slave.                                |
| <b>Global ADC Functions</b>                |                  |  |  |  |       |   |   |  |  |  |  |
| 08   | modes            | Open   | Open                                     | PDWN<br>0—Full<br>1—Standby  | Open  | Open                                      | Internal Power-Down Mode<br>000—Normal (Power-Up)<br>001—Full Power-Down<br>010—Standby<br>011—Normal (Power-Up)<br>Note: External PDWN pin overrides this setting. |  | 0x00   | Determines various generic modes of chip operation. See Power Dissipation and Standby Mode and SPI-Accessible Features sections. |  |
| 09   | clock            | Open   | Open                                     | Open   | Open  | Open                                      | Open  | Open                                     | Duty Cycle Stabilizer<br>0—Disabled<br>1—Enabled | 0x01   | See Clock Duty Cycle and SPI-Accessible Features sections.   |
| <b>Flexible ADC Functions</b>              |                  |  |  |  |       |   |   |  |  |  |  |
| 10   | offset           |  |  | <b>Digital Offset Adjust &lt;5:0&gt;</b><br>011111<br>011110<br>011101<br>...<br>000010<br>000001<br>000000<br>111111<br>111110<br>111101<br>...<br>100001<br>100000 |       |   | <b>Offset in LSBs</b><br>+7 3/4<br>+7 1/2<br>+7 1/4<br><br>+1/2<br>+1/4<br>0<br>-1/4<br>-1/2<br>-3/4<br><br>-7 3/4<br>-8  |  | 0x00   | Adjustable for offset inherent in the converter. See SPI-Accessible Features section.  |  |

# AD9233

| Addr (Hex) | Parameter Name | Bit 7 (MSB)  | Bit 6 | Bit 5                           | Bit 4  | Bit 3 | Bit 2   | Bit 1  | Bit 0 (LSB) | Default Value (Hex) | Default Notes/Comments  |
|------------|----------------|--|-------|---------------------------------|--|-------|---|--|-------------|---------------------|---|
| 0D         | test_io        |  |       | PN23<br>0 = Normal<br>1 = Reset | PN9<br>0 = Normal<br>1 = Reset                           |       | Global Output Test Options<br>000—Off<br>001—Midscale Short<br>010— +FS Short<br>011— -FS Short<br>100—Checker Board Output<br>101—PN 23 Sequence<br>110—PN 9<br>111—One/Zero Word Toggle |  |             | 0x00                | See the <a href="#">Interfacing to High Speed ADCs via SPI User Manual</a> .      |
| 14         | output_mode    | Output Driver Configuration<br>00 for DRVDD = 3.3 V<br>10 for DRVDD = 1.8 V  |       | Open                            | Output Disable<br>1— Disabled<br>0— Enabled <sup>1</sup> | Open  | Output Data Invert<br>1 = Invert  | Data Format Select<br>00—Offset Binary (Default)<br>01—Twos Complement<br>10—Gray Code |             | 0x00                | Configures the outputs and the format of the data and the output driver strength. |
| 16         | output_phase   | DCO Polarity<br>1 = Inverted<br>0 = Normal   | Open  | Open                            | Open   | Open  | Open  | Open   | Open        | 0x00                | See SPI-Accessible Features section.  |
| 18         | VREF           | Internal Reference Resistor Divider<br>00—VREF = 1.25 V<br>01—VREF = 1.5 V<br>10—VREF = 1.75 V<br>11—VREF = 2.00 V |       | Open                            | Open   | Open  | Open  | Open   | Open        | 0xC0                | See SPI-Accessible Features section.  |

<sup>1</sup> External Output Enable (OEB) pin must be high.

## LAYOUT CONSIDERATIONS

### POWER AND GROUND RECOMMENDATIONS

When connecting power to the AD9233, it is recommended that two separate supplies be used: one for analog (AVDD, 1.8 V nominal) and one for digital (DRVDD, 1.8 V to 3.3 V nominal). If only a single 1.8 V supply is available, then it should be routed to AVDD first, then tapped off and isolated with a ferrite bead or filter choke with decoupling capacitors preceding its connection to DRVDD. The user can employ several different decoupling capacitors to cover both high and low frequencies. These should be located close to the point of entry at the PC board level and close to the parts with minimal trace length.

A single PC board ground plane should be sufficient when using the AD9233. With proper decoupling and smart partitioning of the analog, digital, and clock sections of the board, optimum performance is easily achieved.

#### **Exposed Paddle Thermal Heat Slug Recommendations**

It is required that the exposed paddle on the underside of the ADC is connected to analog ground (AGND) to achieve the best electrical and thermal performance of the AD9233. An exposed, continuous copper plane on the PCB should mate to the AD9233 exposed paddle, Pin 0. The copper plane should have several vias to achieve the lowest possible resistive thermal path for heat dissipation to flow through the bottom of the PCB. These vias should be solder filled or plugged.

To maximize the coverage and adhesion between the ADC and PCB, partition the continuous plane by overlaying a silkscreen on the PCB into several uniform sections. This provides several tie points between the two during the reflow process. Using one continuous plane with no partitions only guarantees one tie point between the ADC and PCB. See Figure 58 for a PCB layout example. For detailed information on packaging and the PCB layout of chip scale packages, see Application Note [AN-772](#), *A Design and Manufacturing Guide for the Lead Frame Chip Scale Package (LFCSP)*.

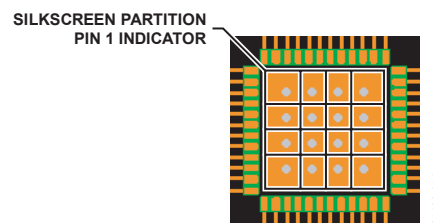


Figure 58. Typical PCB Layout

### CML

The CML pin should be decoupled to ground with a 0.1  $\mu\text{F}$  capacitor, as shown in Figure 38.

### RBIAS

The AD9233 requires the user to place a 10 k $\Omega$  resistor between the RBIAS pin and ground. This resistor sets the master current reference of the ADC core and should have at least a 1% tolerance.

### REFERENCE DECOUPLING

The VREF pin should be externally decoupled to ground with a low ESR 1.0  $\mu\text{F}$  capacitor in parallel with a 0.1  $\mu\text{F}$  ceramic low ESR capacitor. In all reference configurations, REFT and REFB are bypass points provided for reducing the noise contributed by the internal reference buffer. It is recommended to place an external 0.1  $\mu\text{F}$  ceramic capacitor across REFT/REFB. While it is not required to place this 0.1  $\mu\text{F}$  capacitor, the SNR performance will degrade by approximately 0.1 dB without it. All reference decoupling capacitors should be placed as close to the ADC as possible with minimal trace lengths.

## EVALUATION BOARD

The AD9233 evaluation board provides all of the support circuitry required to operate the ADC in its various modes and configurations. The converter can be driven differentially through a double balun configuration (default) or through the AD8352 differential driver. The ADC can also be driven in a single-ended fashion. Separate power pins are provided to isolate the DUT from the AD8352 drive circuitry. Each input configuration can be selected by proper connection of various components. Figure 59 shows the typical bench characterization setup used to evaluate the ac performance of the AD9233.

It is critical that the signal sources used for the analog input and clock have very low phase noise (<1 ps rms jitter) to realize the optimum performance of the converter. Proper filtering of the analog input signal to remove harmonics and lower the integrated or broadband noise at the input is also necessary to achieve the specified noise performance.

See Figure 60 to Figure 70 for the complete schematics and layout diagrams that demonstrate the routing and grounding techniques that should be applied at the system level.

### POWER SUPPLIES

This evaluation board comes with a wall-mountable switching power supply that provides a 6 V, 2 A maximum output. Simply connect the supply to the rated 100 V ac to 240 V ac wall outlet at 47 Hz to 63 Hz. The other end is a 2.1 mm inner diameter jack that connects to the PCB at P500. Once on the PC board, the 6 V supply is fused and conditioned before connecting to five low dropout linear regulators that supply the proper bias to each of the various sections on the board. When operating the evaluation board in a nondefault condition, L501, L503, L504, L508, and L509 can be removed to disconnect the switching power supply. This enables the user to bias each section of the board independently. Use P501 to connect a different supply for each section.

Although at least one 1.8 V supply is needed with a 1 A current capability for AVDD\_DUT and DRVDD\_DUT, it is recommended that separate supplies be used for analog and digital.

To operate the evaluation board using the AD8352 option, a separate 5.0 V analog supply is needed. The 5.0 V supply, or AMP\_VDD, should have a 1 A current capability. To operate the evaluation board using the alternate SPI options, a separate 3.3 V analog supply is needed in addition to the other supplies. The 3.3 V supply (AVDD\_3.3V) should have a 1 A current capability as well. Solder Jumpers J501, J502, and J505 allow the user to combine these supplies. See Figure 64 for more details.

### INPUT SIGNALS

When connecting the clock and analog source, use clean signal generators with low phase noise, such as Rohde & Schwarz SMHU or Agilent HP8644 signal generators or the equivalent. Use one meter long, shielded, RG-58, 50 Ω coaxial cables for making connections to the evaluation board. Enter the desired frequency and amplitude for the ADC. Typically, most ADI evaluation boards can accept a ~2.8 V p-p or 13 dBm sine wave input for the clock. When connecting the analog input source, it is recommended to use a multipole, narrow-band, band-pass filter with 50 Ω terminations. Analog Devices uses TTE®, Allen Avionics, and K&L® types of band-pass filters. Connect the filter directly to the evaluation board, if possible.

### OUTPUT SIGNALS

The parallel CMOS outputs interface directly with Analog Devices' standard single-channel FIFO data capture board (HSC-ADC-EVALB-SC). For more information on the FIFO boards and their optional settings, visit [www.analog.com/FIFO](http://www.analog.com/FIFO).

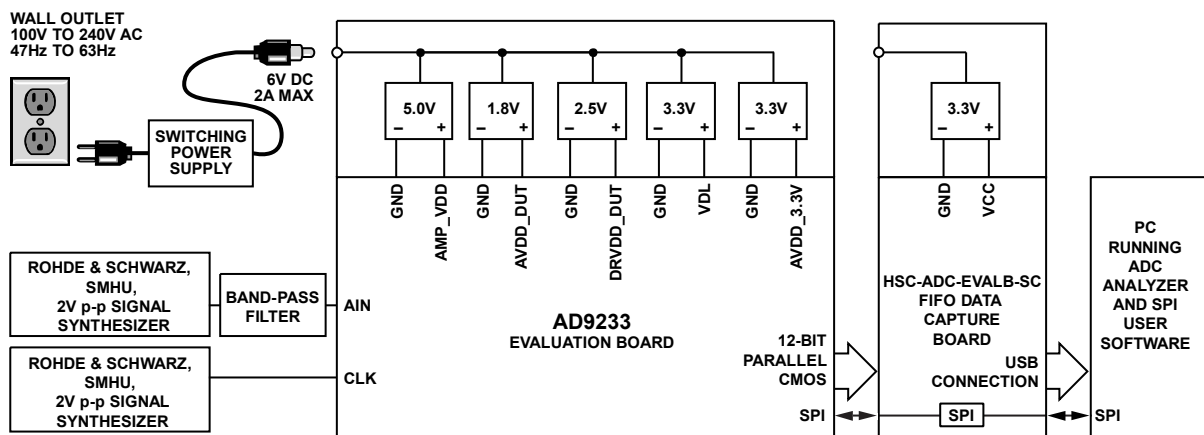


Figure 59. Evaluation Board Connection

## DEFAULT OPERATION AND JUMPER SELECTION SETTINGS

The following is a list of the default and optional settings or modes allowed on the AD9233 Rev. A evaluation board.

### POWER

Connect the switching power supply that is supplied in the evaluation kit between a rated 100 V ac to 240 V ac wall outlet at 47 Hz to 63 Hz and P500.

### VIN

The evaluation board is set up for a double balun configuration analog input with optimum 50  $\Omega$  impedance matching out to 70 MHz. For more bandwidth response, the differential capacitor across the analog inputs can be changed or removed (see Table 8). The common mode of the analog inputs is developed from the center tap of the transformer via the CML pin of the ADC. See the Analog Input Considerations section for more information.

### VREF

VREF is set to 1.0 V by tying the SENSE pin to ground via JP507 (Pin 1 and Pin 2). This causes the ADC to operate in 2.0 V p-p full-scale range. A separate external reference option is also included on the evaluation board. Simply connect JP507 between Pin 2 and Pin 3, connect JP501, and provide an external reference at E500. Proper use of the VREF options is detailed in the Voltage Reference section.

### RBIAS

RBIAS requires a 10 k $\Omega$  (R503) to ground and is used to set the ADC core bias current.

### CLOCK

The default clock input circuitry is derived from a simple transformer-coupled circuit using a high bandwidth 1:1 impedance ratio transformer (T503) that adds a very low amount of jitter to the clock path. The clock input is 50  $\Omega$  terminated and ac-coupled to handle single-ended sine wave inputs. The transformer converts the single-ended input to a differential signal that is clipped before entering the ADC clock inputs.

### PDWN

To enable the power-down feature, connect JP506, shorting the PDWN pin to AVDD.

### CSB

The CSB pin is internally pulled-up, setting the chip into external pin mode, to ignore the SDIO and SCLK information. To connect the control of the CSB pin to the SPI circuitry on the evaluation board, connect JP1 Pin 1 and Pin 2. To set the chip into serial pin mode and to enable the SPI information on the SDIO and SCLK pins, tie JP1 low (connect Pin 2 and Pin 3) in the always enabled mode.

### SCLK/DFS

If the SPI port is in external pin mode, the SCLK/DFS pin sets the data format of the outputs. If the pin is left floating, the pin is internally pulled down, setting the default condition to binary. Connecting JP2 Pin 2 and Pin 3 sets the format to twos complement. If the SPI port is in serial pin mode, connecting JP2 Pin 1 and Pin 2 connects the SCLK pin to the on board SPI circuitry. See the Serial Port Interface (SPI) section for more details.

### SDIO/DCS

If the SPI port is in external pin mode, the SDIO/DCS pin acts to set the duty cycle stabilizer. If the pin is left floating, the pin is internally pulled up, setting the default condition to DCS enabled. To disable the DCS, connect JP3 Pin 2 and Pin 3. If the SPI port is in serial pin mode, connecting JP3 Pin 1 and Pin 2 connects the SDIO pin to the on-board SPI circuitry. See the Serial Port Interface (SPI) section for more details.

## ALTERNATIVE CLOCK CONFIGURATIONS

A differential LVPECL clock can also be used to clock the ADC input using the [AD9515](#) (U500). When using this drive option, the components listed in Table 16 need to be populated. Consult the [AD9515](#) data sheet for further information.

To configure the analog input to drive the [AD9515](#) instead of the default transformer option, the following components need to be added, removed, and/or changed.

- Remove R507, R508, C532, and C533 in the default clock path.
- Populate R505 with a 0  $\Omega$  resistor and C531 in the default clock path.
- Populate R511, R512, R513, R515 to R524, U500, R580, R582, R583, R584, C536, C537, and R586.

If using an oscillator, two oscillator footprint options are also available (OSC500) to check the performance of the ADC. JP508 provides the user flexibility in using the enable pin, which is common on most oscillators. Populate OSC500, R575, R587, and R588 to use this option.

## ALTERNATIVE ANALOG INPUT DRIVE CONFIGURATION

This section provides a brief description of the alternative analog input drive configuration using the [AD8352](#). When using this particular drive option, some components need to be populated as listed in Table 16. For more details on the [AD8352](#) differential driver, including how it works and its optional pin settings, consult the [AD8352](#) data sheet.

To configure the analog input to drive the [AD8352](#) instead of the default transformer option, the following components need to be added, removed and/or changed:

- Remove C1 and C2 in the default analog input path.
- Populate R3 and R4 with 200  $\Omega$  resistors in the analog input path.
- Populate the optional amplifier input path with all components, except R594, R595, and C502. Note that to terminate the input path, only one of these components, (R9, R592, or R590 and R591) should be populated.
- Populate C529 with a 5 pF capacitor in the analog input path.

Currently, R561 and R562 are populated with 0  $\Omega$  resistors to allow signal connection. This area allows the user to design a filter if additional requirements are necessary.

SCHEMATICS

850-29250

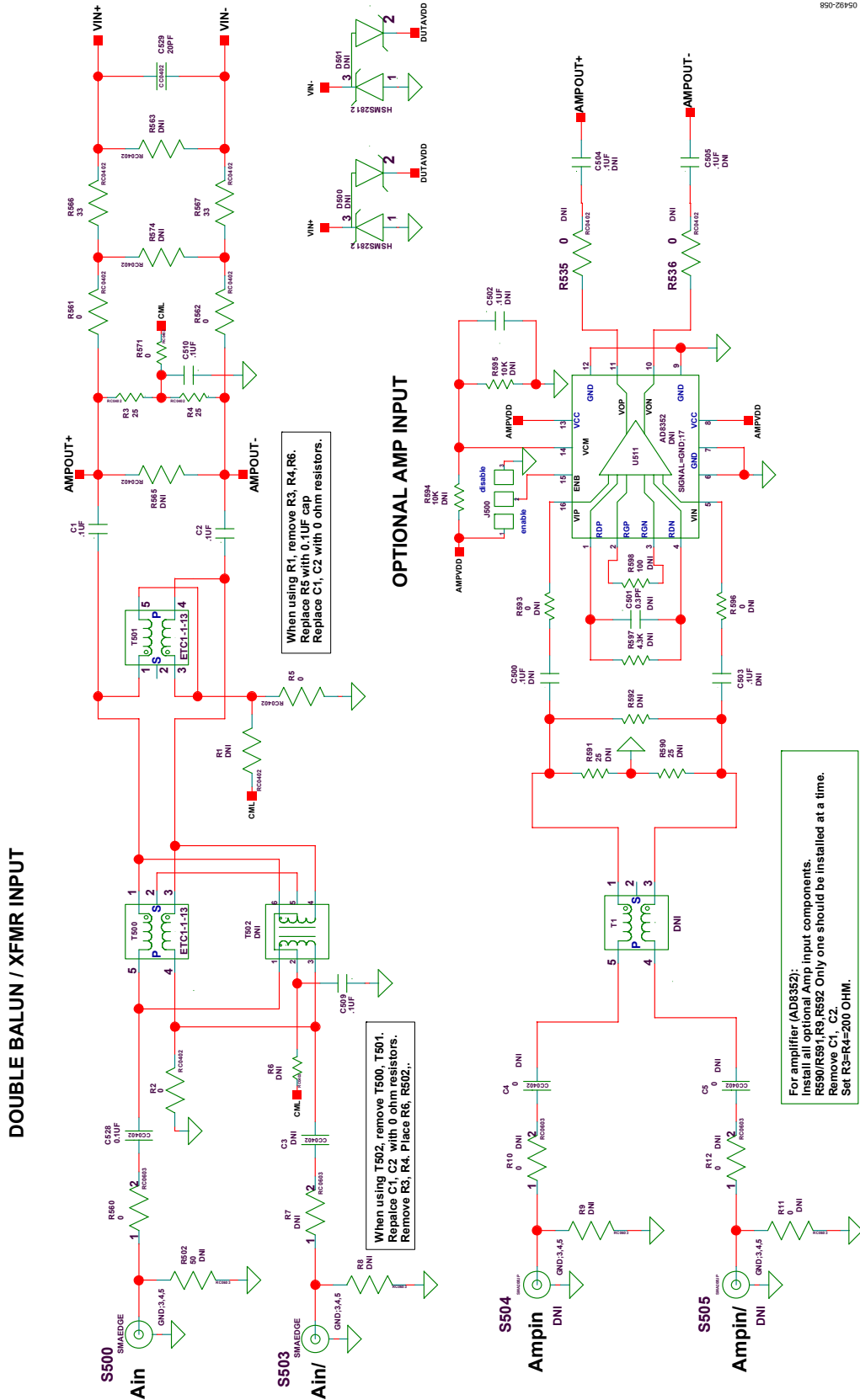


Figure 60. Evaluation Board Schematic, DUT Analog Inputs

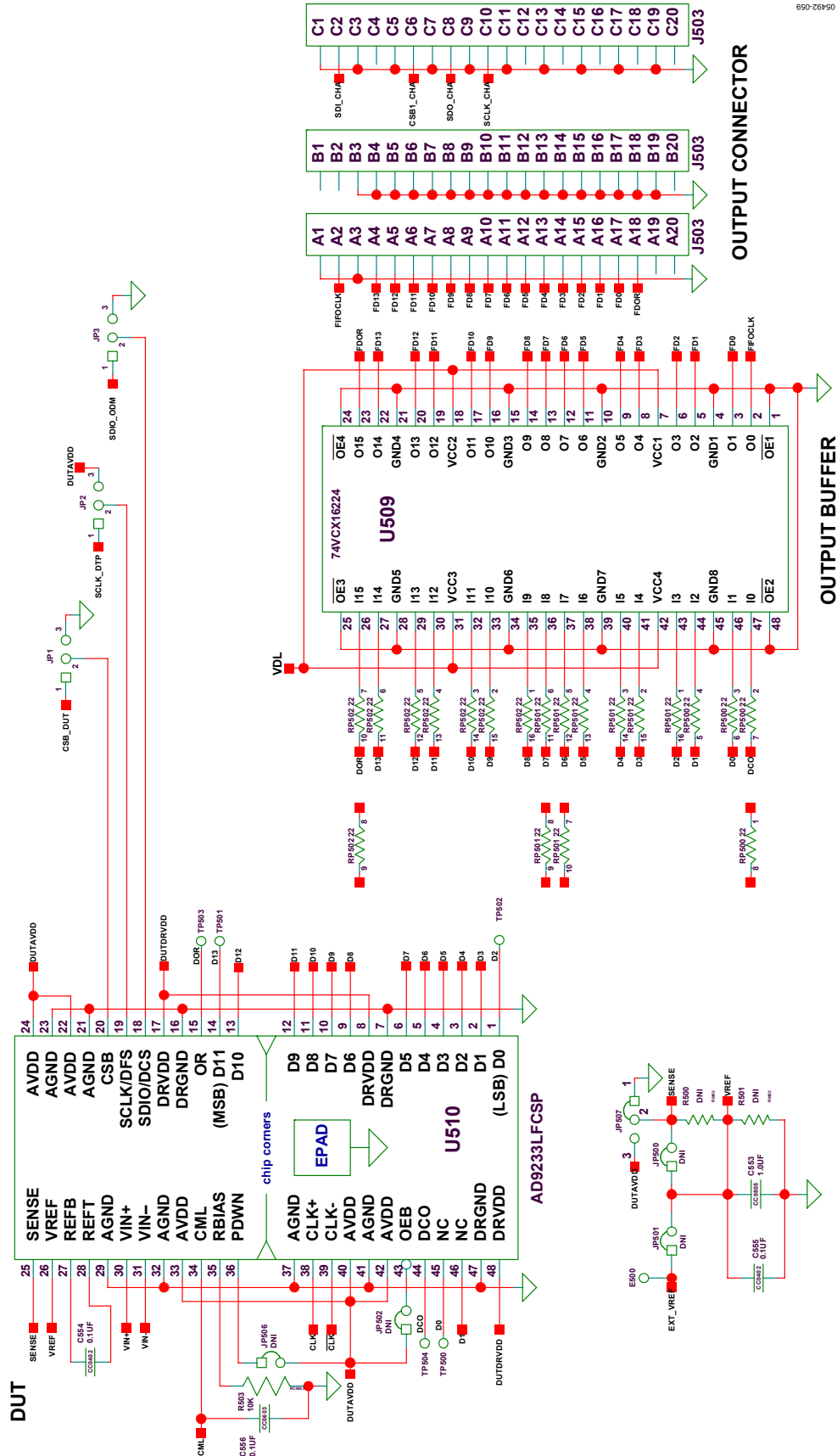


Figure 61. Evaluation Board Schematic, DUT, VREF, and Digital Output Interface



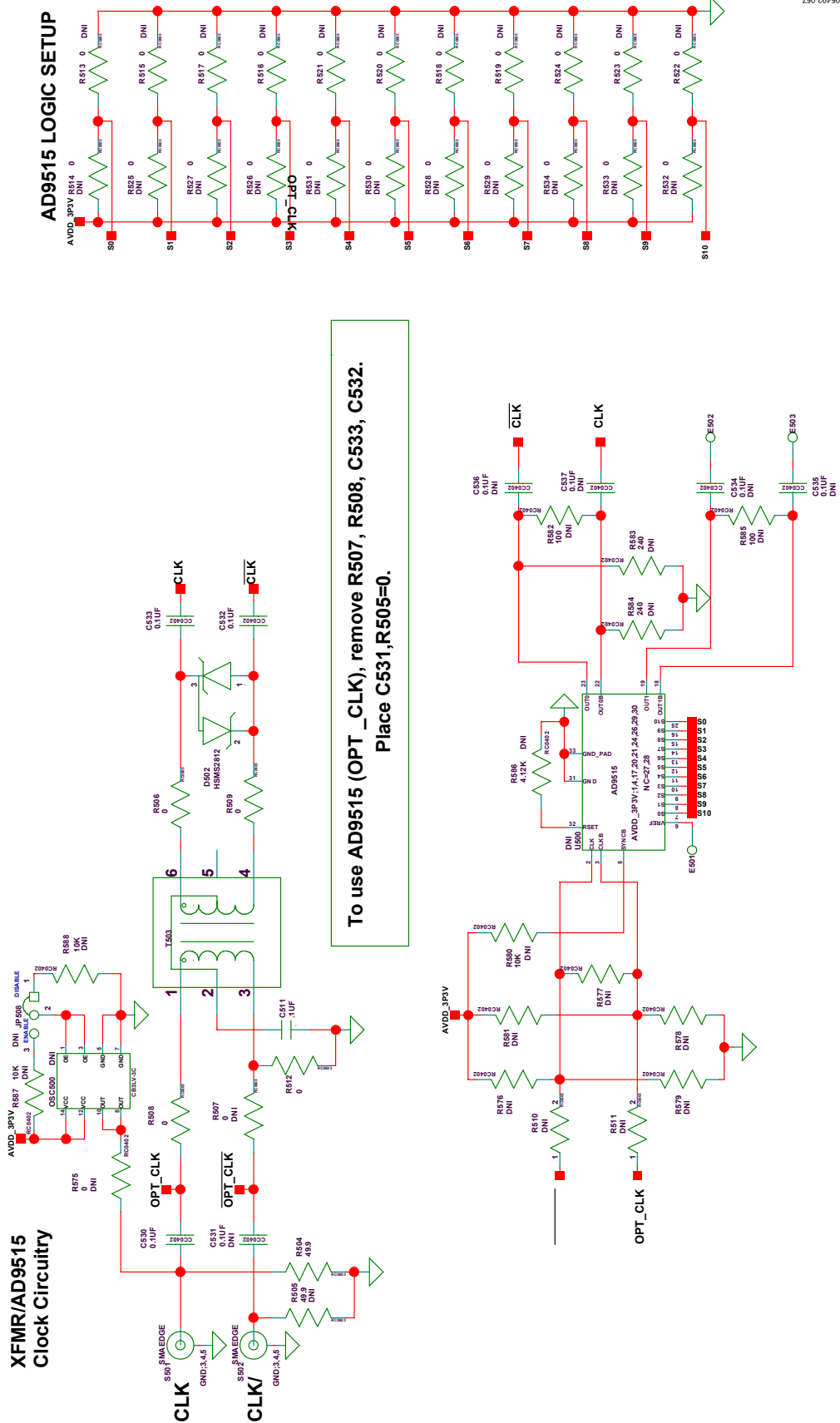


Figure 62. Evaluation Board Schematic, DUT Clock Inputs



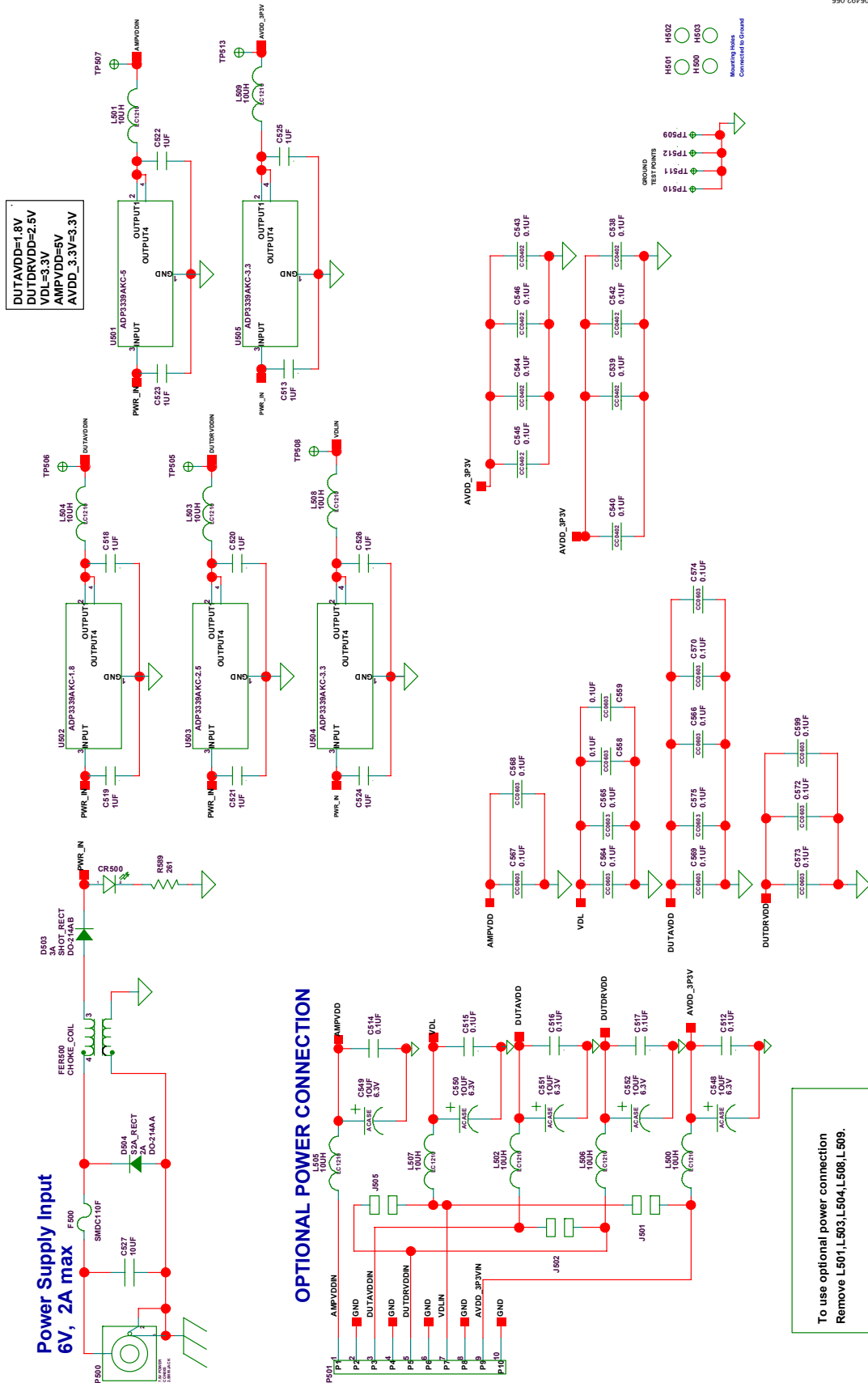


Figure 64. Evaluation Board Schematic, Power Supply Inputs

EVALUATION BOARD LAYOUTS

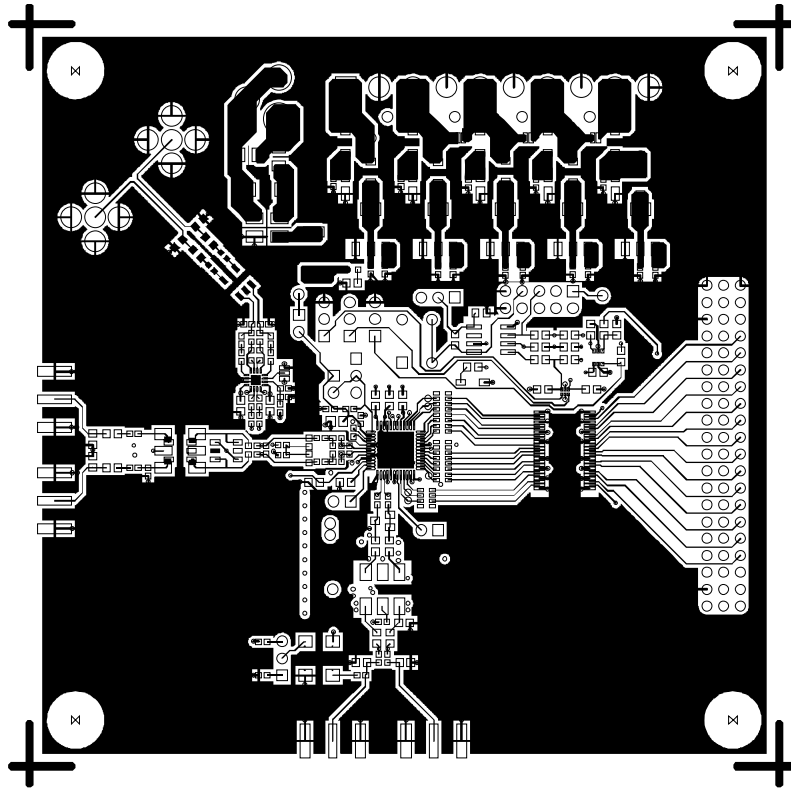


Figure 65. Evaluation Board Layout, Primary Side

05492-063

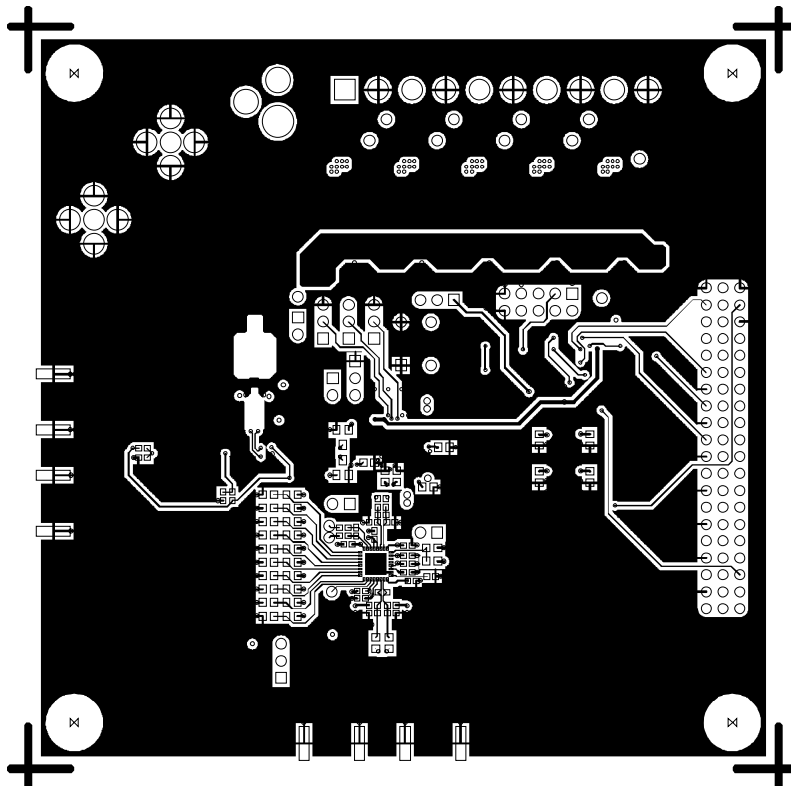
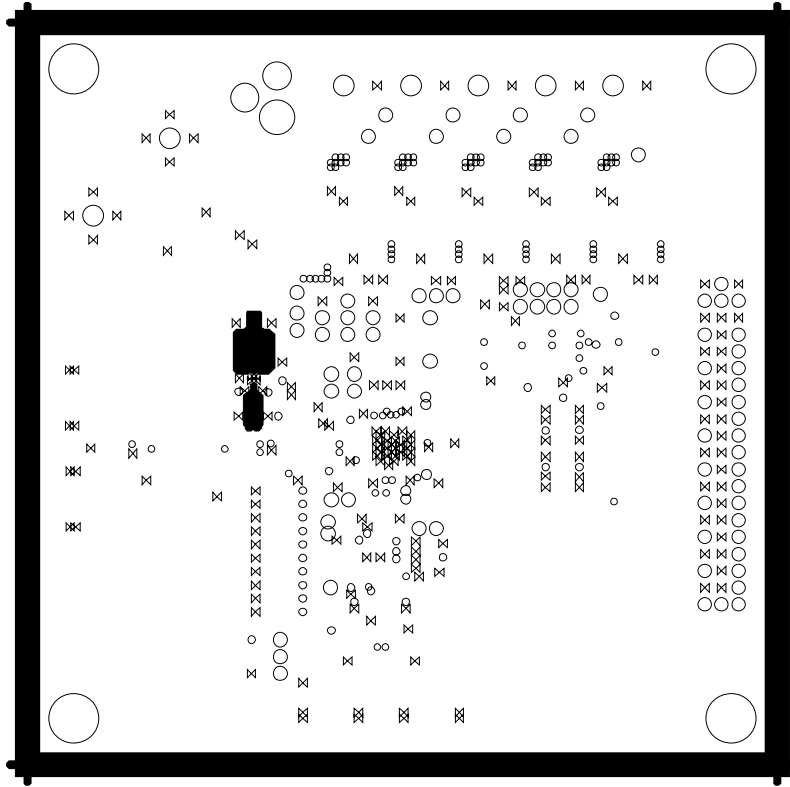


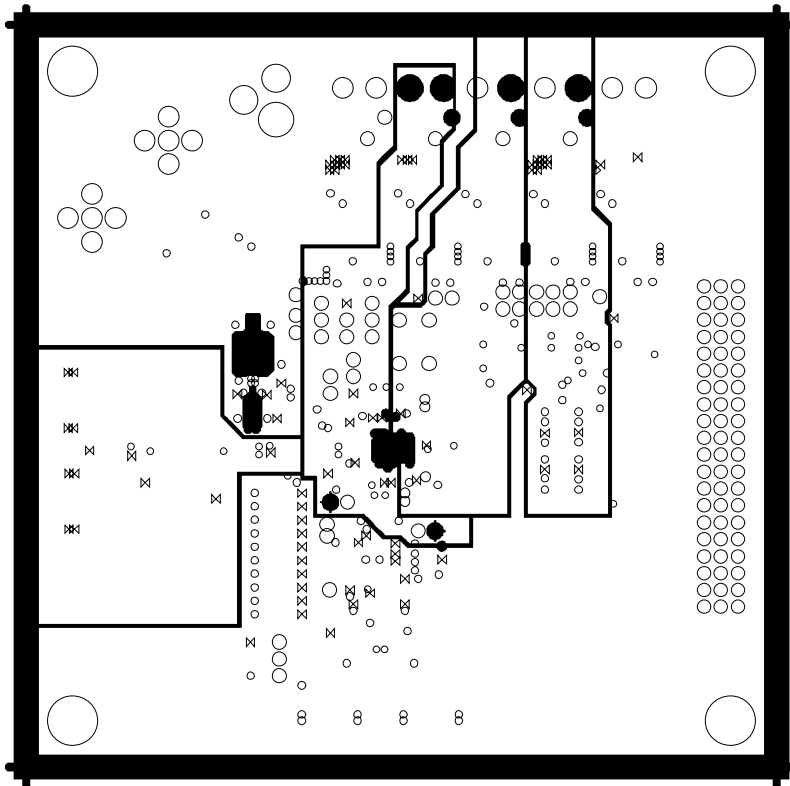
Figure 66. Evaluation Board Layout, Secondary Side (Mirrored Image)

05492-062



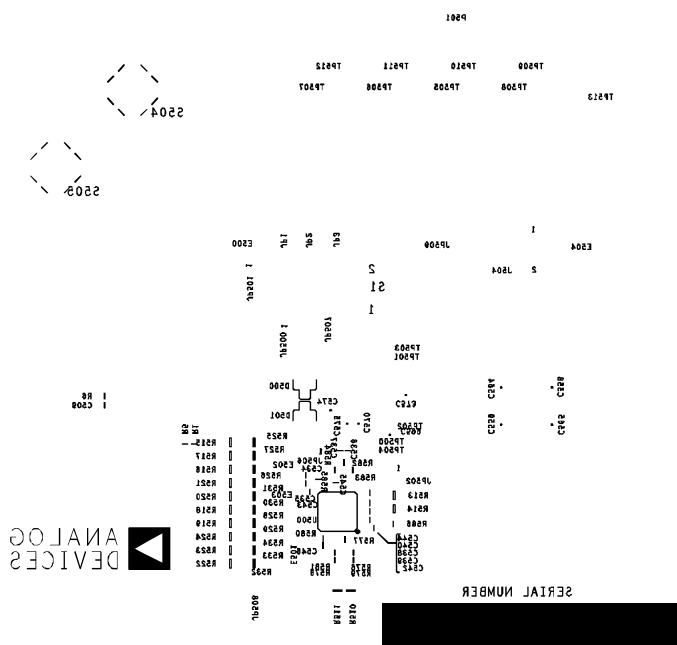
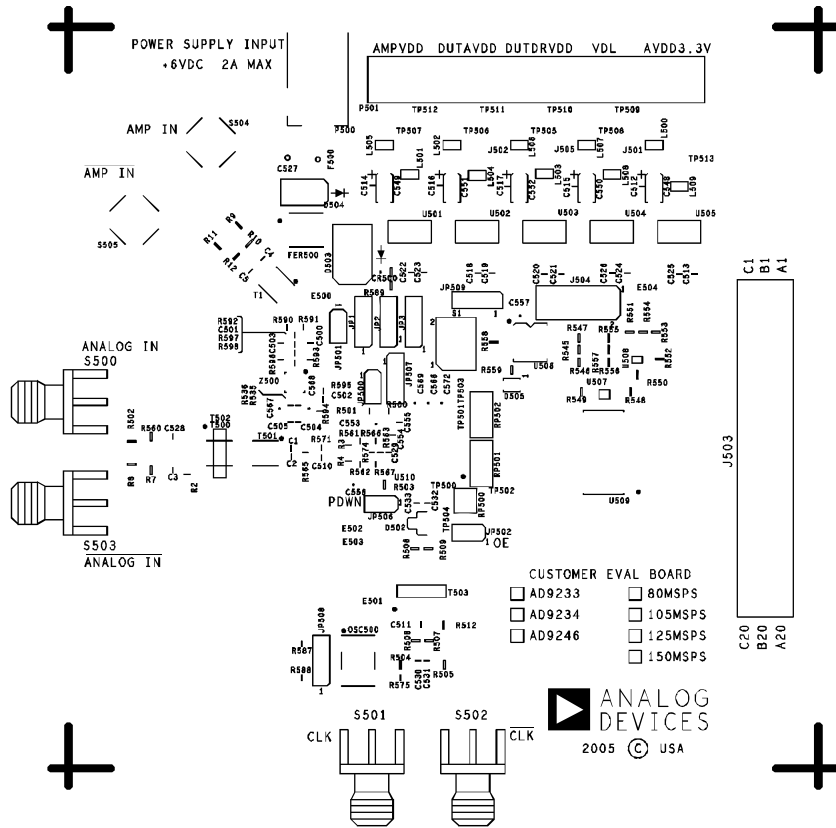
05492-065

Figure 67. Evaluation Board Layout, Ground Plane



05492-064

Figure 68. Evaluation Board Layout, Power Plane



**BILL OF MATERIALS (BOM)**

Table 16. Evaluation Board BOM

| Item | Qty. | Omit (DNI) | Reference Designator   | Device        | Package                                      | Description                                    | Supplier/Part No.                        |
|------|------|------------|--|---------------|--|--|--|
| 1    | 1    |            | AD9246CE_REVA  | PCB           |  | PCB  | Analog Devices, Inc.                     |
| 2    | 24   |            | C1, C2, C509, C510, C511, C512, C514, C515, C516, C517, C528, C530, C532, C533, C538, C539, C540, C542, C543, C544, C545, C546, C554, C555 | Capacitors    | 0402   | 0.1 $\mu$ F                                    |  |
|      |      | 12         | C3, C500, C502, C503, C504, C505, C531, C534, C535, C536, C537, C557   |               |  |  |  |
| 3    |      | 1          | C501   | Capacitor     | 0402   | 0.3 pF   |  |
| 4    |      | 2          | C4, C5   | Resistors     | 0402   | 0 $\Omega$                                     |  |
| 5    | 10   |            | C513, C518, C519, C520, C521, C522, C523, C524, C525, C526   | Capacitors    | 0402   | 1.0 $\mu$ F                                    |  |
| 6    | 1    |            | C527   | Capacitor     | 1206   | 10 $\mu$ F                                     |  |
| 7    | 1    |            | C529   | Capacitor     | 0402   | 20 pF  |  |
| 8    | 5    |            | C548, C549, C550, C551, C552   | Capacitors    | ACASE  | 10 $\mu$ F                                     |  |
| 9    | 1    |            | C553   | Capacitor     | 0805   | 1.0 $\mu$ F                                    |  |
| 10   | 15   |            | C556, C558, C559, C564, C565, C566, C567, C568, C569, C570, C572, C573, C574, C575, C599   | Capacitors    | 0603   | 0.1 $\mu$ F                                    |  |
| 11   | 1    |            | CR500  | LED           | 0603   | Green  | Panasonic<br>LNJ314G8TRA                 |
| 12   | 1    |            | D502   | Diode         | SOT-23                                       | 30 V, 20 mA,<br>dual Schottky                  | HSMS2812                                 |
|      |      | 2          | D500, D501   | Diodes        |  |  |  |
| 13   | 1    |            | D503   | Diode         | DO-214AB                                     | 3 A, 30 V, SMC                                 | Micro Commercial Group<br>SK33-TPMSCT-ND |
| 14   | 1    |            | D504   | Diode         | DO-214AA                                     | 2 A, 50 V, SMC                                 | Micro Commercial Group<br>S2A-TPMSTR-ND  |
| 15   |      | 1          | D505   | LED           | LN1461C                                      | AMB  | Amber LED                                |
| 16   | 1    |            | F500   | Fuse          | 1210   | 6.0V, 2.2 A trip<br>current resettable<br>fuse | Tyco, Raychem<br>NANO SMDC110F-2         |
| 17   | 1    |            | FER500   | Choke         | 2020   |  | Murata<br>DLW5BSN191SQ2                  |
| 18   |      | 1          | J500   | Jumper        |  | Solder jumper                                  |  |
| 19   |      | 3          | J501, J502, J505   | Jumpers       |  | Solder jumper                                  |  |
| 20   | 1    |            | J503   | Connector     | 120 Pin                                      | Male header                                    | Samtec<br>TSW-140-08-G-T-RA              |
| 21   |      | 1          | J504   | Connector     | 10 Pin                                       | Male, 2 $\times$ 5                             | Samtec                                   |
| 22   | 3    |            | JP1, JP2, JP3  | Jumpers       | 3 Pin  | Male, straight                                 | Samtec<br>TSW-103-07-G-S                 |
| 23   | 4    |            | JP500, JP501, JP502, JP506   | Jumpers       | 2 Pin  | Male, straight                                 | Samtec<br>TSW-102-07-G-S                 |
| 24   | 1    |            | JP507  | Jumpers       | 3 Pin  | Male, straight                                 | Samtec<br>TSW-103-07-G-S                 |
|      |      | 2          | JP508, JP509   |               |  |  |  |
| 25   | 10   |            | L500, L501, L502, L503, L504, L505, L506, L507, L508, L509   | Ferrite Beads | 3.2 mm $\times$<br>2.5 mm $\times$<br>1.6 mm |  | Digi-Key P9811CT-ND                      |
| 26   |      | 1          | OSC500   | Oscillator    | SMT  | 125 MHz or<br>105 MHz                          | CTS Reeves CB3LV-3C                      |
| 27   | 1    |            | P500   | Connector     | PJ-102A                                      | DC power jack                                  | Digi-Key CP-102A-ND                      |
| 28   |      | 1          | P501   | Connector     | 10 Pin                                       | Male, straight                                 | PTMICRO10                                |

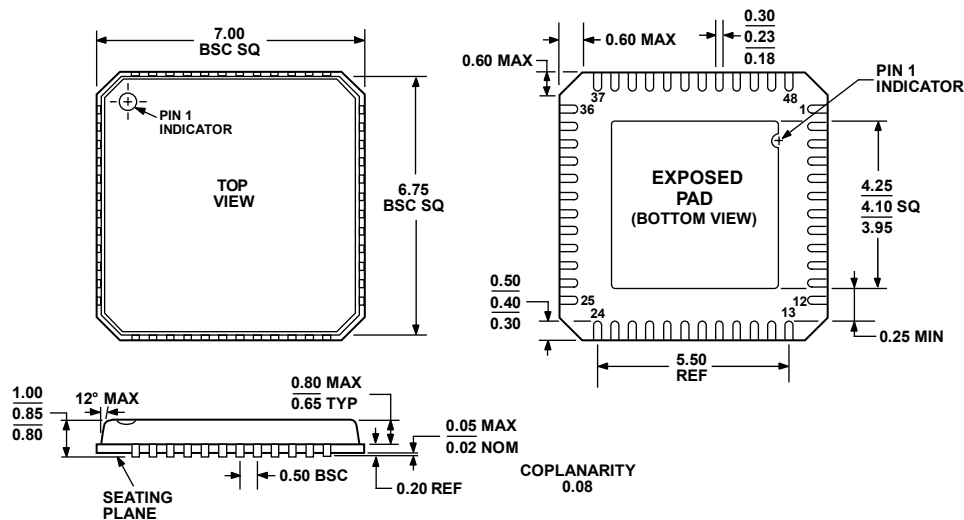
# AD9233

| Item | Qty. | Omit (DNI) | Reference Designator  | Device                 | Package          | Description                  | Supplier/Part No.                                       |
|------|------|------------|---|------------------------|------------------|------------------------------|---|
| 29   |      | 6          | R1, R6, R563, R565, R574, R577  | Resistors              | 0402             | DNI                          |   |
| 30   | 5    | 6          | R2, R5, R561, R562, R571<br>R10, R11, R12, R535, R536, R575   | Resistors<br>Resistors | 0402             | 0 Ω                          |   |
| 31   | 2    |            | R3, R4  | Resistors              | 0402             | 25 Ω                         |   |
| 32   |      | 6          | R7, R8, R9, R502, R510, R511  | Resistors              | 0603             | DNI                          |   |
| 33   |      | 6          | R500, R501, R576, R578, R579, R581  | Resistors              | 0402             | DNI                          |   |
| 34   | 4    |            | R503, R548, R549, R550  | Resistors              | 0603             | 10 kΩ                        |   |
| 35   | 1    | 1          | R504<br>R505  | Resistor<br>Resistor   | 0603             | 49.9 Ω                       |   |
| 36   | 9    |            | R506, R508, R509, R512, R554,<br>R555, R556, R557, R560   | Resistors              | 0603             | 0 Ω                          |   |
|      |      | 23         | R507, R514, R513, R515, R516, R517,<br>R518, R519, R520, R521, R522, R523,<br>R524, R525, R526, R527, R528, R529,<br>R530, R531, R532, R533, R534 |                        |                  |                              |   |
| 37   |      | 4          | R545, R546, R547, R558  | Resistors              | 0603             | 4.7 kΩ                       |   |
| 38   | 3    |            | R551, R552, R553  | Resistors              | 0603             | 1 kΩ                         |   |
| 39   | 1    |            | R589  | Resistors              | 0603             | 261 Ω                        |   |
|      |      | 1          | R559  |                        |                  |                              |   |
| 40   | 2    |            | R566, R567  | Resistors              | 0402             | 33 Ω                         |   |
| 41   |      | 3          | R582, R585, R598  | Resistors              | 0402             | 100 Ω                        |   |
| 42   |      | 2          | R583, R584  | Resistors              | 0402             | 240 Ω                        |   |
| 43   |      | 1          | R586  | Resistor               | 0402             | 4.12 kΩ                      |   |
| 44   |      | 3          | R580, R587, R588  | Resistors              | 0402             | 10 kΩ                        |   |
| 45   |      | 2          | R590, R591  | Resistors              | 0402             | 25 Ω                         |   |
| 46   |      | 1          | R592  | Resistor               | 0402             | DNI                          |   |
| 47   |      | 2          | R593, R596  | Resistors              | 0402             | 0 Ω                          |   |
| 48   |      | 2          | R594, R595  | Resistors              | 0402             | 10 kΩ                        |   |
| 49   |      | 1          | R597  | Resistor               | 0402             | 4.3 kΩ                       |   |
| 50   | 1    |            | RP500   | Resistor               | RCA74204         | 22 Ω                         |   |
| 51   | 2    |            | RP501, RP502  | Resistors              | RCA74208         | 22 Ω                         |   |
| 52   |      | 1          | S1  | Switch                 |                  | Momentary<br>(normally open) | Panasonic<br>EVQ-PLDA15                                 |
| 53   | 2    |            | S500, S501  | Connectors             | SMAEDGE          | SMA edge<br>right angle      |   |
|      |      | 2          | S502, S503  |                        |                  |                              |   |
| 54   |      | 2          | S504, S505  | Connectors             | SMA200UP         | SMA RF<br>5-pin upright      |   |
| 55   | 2    |            | T500, T501  | Transformers           | SM-22            |                              | M/A-Com ETC1-1-13                                       |
|      |      | 1          | T1  |                        |                  |                              |   |
| 56   | 1    |            | T503  | Transformer            | CD542            |                              | Mini-Circuits<br>ADT1-1WT                               |
|      |      | 1          | T502  |                        |                  |                              |   |
| 57   |      | 1          | U500  | IC                     | 32-Lead<br>LFCSP | Clock distribution           | Analog Devices, Inc.<br><a href="#">AD9515BCPZ</a>      |
| 58   | 1    |            | U501  | IC                     | SOT-223          | Voltage regulator            | Analog Devices, Inc.<br><a href="#">ADP3339AKCZ-5</a>   |
| 59   | 1    |            | U502  | IC                     | SOT-223          | Voltage regulator            | Analog Devices, Inc.<br><a href="#">ADP3339AKCZ-1.8</a> |
| 60   | 1    |            | U503  | IC                     | SOT-223          | Voltage regulator            | Analog Devices, Inc.<br><a href="#">ADP3339AKCZ-2.5</a> |
| 61   | 2    |            | U504, U505  | ICs                    | SOT-223          | Voltage regulator            | Analog Devices, Inc.<br><a href="#">ADP3339AKCZ-3.3</a> |



| <b>Item</b>  | <b>Qty.</b> | <b>Omit (DNI)</b> | <b>Reference Designator</b> | <b>Device</b> | <b>Package</b> | <b>Description</b>     | <b>Supplier/Part No.</b>                        |
|--------------|-------------|-------------------|-----------------------------|---------------|----------------|------------------------|---|
| 62           |             | 1                 | U506                        | IC            | 8-pin SOIC     | 8-bit microcontroller  | Microchip PIC12F629                             |
| 63           | 1           |                   | U507                        | IC            | SC70           | Dual buffer            | Fairchild NC7WZ16                               |
| 64           | 1           |                   | U508                        | IC            | SC70           | Dual buffer            | Fairchild NC7WZ07                               |
| 65           | 1           |                   | U509                        | IC            | 48-Lead TSSOP  | Buffer/line driver     | Fairchild 74VCX162244                           |
| 66           | 1           |                   | U510                        | DUT (AD9233)  | 48-Lead LFCSP  | ADC                    | Analog Devices, Inc. AD9233BCPZ                 |
| 67           |             | 1                 | U511 (or Z500)              | IC            | 16-Lead LFCSP  | Differential amplifier | Analog Devices, Inc. <a href="#">AD8352ACPZ</a> |
| <b>Total</b> | <b>128</b>  | <b>107</b>        |                             |               |                |                        |   |

## OUTLINE DIMENSIONS



COMPLIANT TO JEDEC STANDARDS MO-220-VKKD-2

Figure 71. 48-Lead Frame Chip Scale Package [LFSCP\_VQ]  
7 mm × 7 mm Body, Very Thin Quad  
(CP-48-3)

Dimensions shown in millimeters

## ORDERING GUIDE

| Model                          | Temperature Range | Package Description                              | Package Option <sup>1</sup> |
|--------------------------------|-------------------|--|-----------------------------|
| AD9233BCPZ-125 <sup>2</sup>    | -40°C to +85°C    | 48-Lead Lead Frame Chip Scale Package [LFSCP_VQ] | CP-48-3                     |
| AD9233BCPZRL7-125 <sup>2</sup> | -40°C to +85°C    | 48-Lead Lead Frame Chip Scale Package [LFSCP_VQ] | CP-48-3                     |
| AD9233BCPZ-105 <sup>2</sup>    | -40°C to +85°C    | 48-Lead Lead Frame Chip Scale Package [LFSCP_VQ] | CP-48-3                     |
| AD9233BCPZRL7-105 <sup>2</sup> | -40°C to +85°C    | 48-Lead Lead Frame Chip Scale Package [LFSCP_VQ] | CP-48-3                     |
| AD9233BCPZ-80 <sup>2</sup>     | -40°C to +85°C    | 48-Lead Lead Frame Chip Scale Package [LFSCP_VQ] | CP-48-3                     |
| AD9233BCPZRL7-80 <sup>2</sup>  | -40°C to +85°C    | 48-Lead Lead Frame Chip Scale Package [LFSCP_VQ] | CP-48-3                     |
| AD9233-125EB                   |                   | Evaluation Board                                 |                             |
| AD9233-105EB                   |                   | Evaluation Board                                 |                             |
| AD9233-80EB                    |                   | Evaluation Board                                 |                             |

<sup>1</sup> It is required that the exposed paddle be soldered to the AGND plane to achieve the best electrical and thermal performance.

<sup>2</sup> Z = Pb-free part.

**NOTES**

**AD9233**

**NOTES**