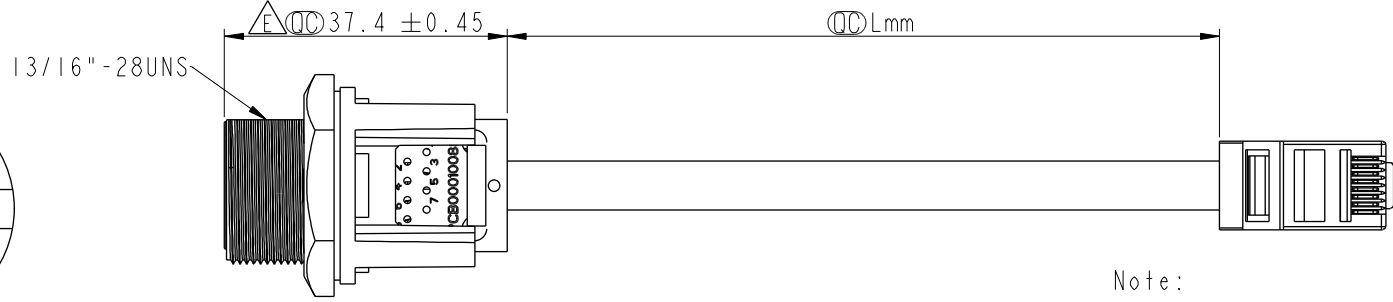
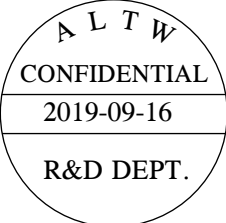
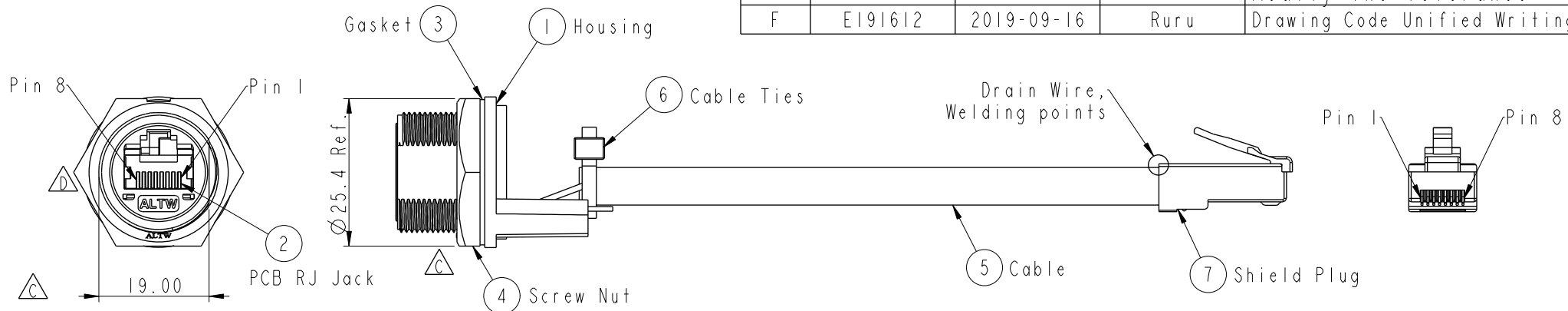


THIS DOCUMENT IS SUBJECT TO CHANGE WITHOUT NOTICE. IT IS CONFIDENTIAL AND A PROPERTY OF Amphenol LTW. DISCLOSURE TO THIRD PARTY HAS TO BE AUTHORIZED BY Amphenol LTW.

| REV. | ECN NO.        | DATE       | SIGN   | DESCRIPTION                  |
|------|----------------|------------|--------|------------------------------|
| D    | LEN15C0248~54  | 2015-12-16 | Jinhai | 凸字底部修平                       |
| E    | LEN1810017~024 | 2017-11-28 | Jalam  | Modify The Tolerance         |
| F    | E191612        | 2019-09-16 | Ruru   | Drawing Code Unified Writing |

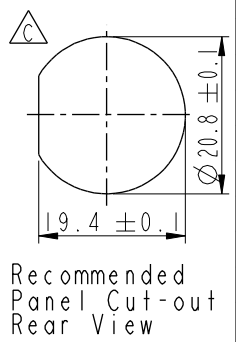


| Cable length | Tolerance |
|--------------|-----------|
| 0.0~100 mm   | ±10 mm    |
| 101~300 mm   | ±15 mm    |
| 301~1000 mm  | ±20 mm    |

- Note:
- \* (⌀) Important Dimension
  - \* Waterproof Rate : IP67 Mated
  - \* Housing : Nylon+GF,UL 94V-0, BLACK
  - \* Screw Nut : Nylon+GF, BLACK
  - \* Gasket : Silicone, UL 94V-0, Gray.
  - \* PCB: FR-4
  - \* Jack : PBT Polyester UL 94V-0
  - \* Use without Waterproof cap or Dust cap  
For Panel Thickness Max: 4.2mm
  - \* Use with Waterproof cap or Dust cap  
For Panel Thickness Max: 3.0mm
  - \* Screw torsion value range: 8~12kgf-cm

RCP-5SPFFP-SCM7BXX  $\Delta$   
 10: 100mm  
 15: 150mm  
 20: 200mm  
 s  
 A0: 1000mm  
 Cable Pitch Unit=50mm  
 Cable Length(L):100~1000mm

| Shield  | Drain Wire   | 接地線 | Shield |       |
|---------|--------------|-----|--------|-------|
| 8       | Brown        | 棕   | 8      | Twist |
| 7       | White/Brown  | 白/棕 | 7      |       |
| 6       | Green        | 綠   | 6      | Twist |
| 5       | White/Blue   | 白/藍 | 5      |       |
| 4       | Blue         | 藍   | 4      | Twist |
| 3       | White/Green  | 白/綠 | 3      |       |
| 2       | Orange       | 橘   | 2      | Twist |
| 1       | White/Orange | 白/橘 | 1      |       |
| Jack    | Wire Color   |     | Plug   |       |
| Pin Out |              |     |        |       |



|           |       |                                       |                 |
|-----------|-------|---------------------------------------|-----------------|
| UNIT:mm   |       | TITLE<br>RJ45,C SIZE,MATED WATERPROOF |                 |
| TOLERANCE |       | SCALE<br>1:1                          | SIZE<br>A4      |
| .X        | ±0.25 | REV.<br>F                             | SHEET<br>1 OF 1 |
| .XX       | ±0.1  | WC-REV.<br>B.6                        | OF              |
| .XXX      | ±0.05 | (⌀): Inspection item                  |                 |
| ANGLES    | ±1°   |                                       |                 |

**Amphenol LTW**  
 安費諾亮泰企業股份有限公司

|                    |             |            |
|--------------------|-------------|------------|
| ITEM NO            | DRAWN BY    | DATE       |
|                    | Ruru        | 2019-09-16 |
| DWG NO             | CHECKED BY  | DATE       |
| RCP-5SPFFP-SCM7BXX | Rita        | 2019-09-16 |
| CUSTOMER           | APPROVED BY | DATE       |
| ALTW               | Max         | 2019-09-16 |