

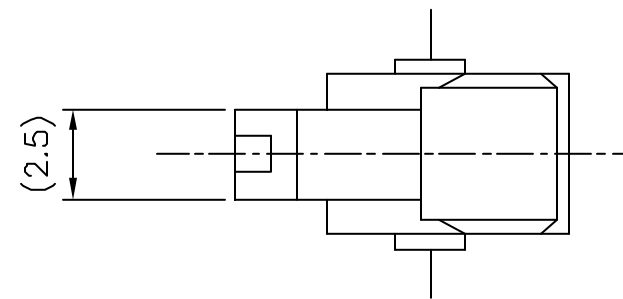
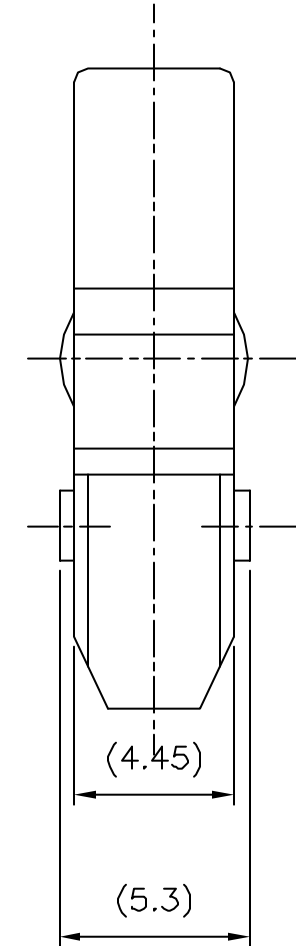
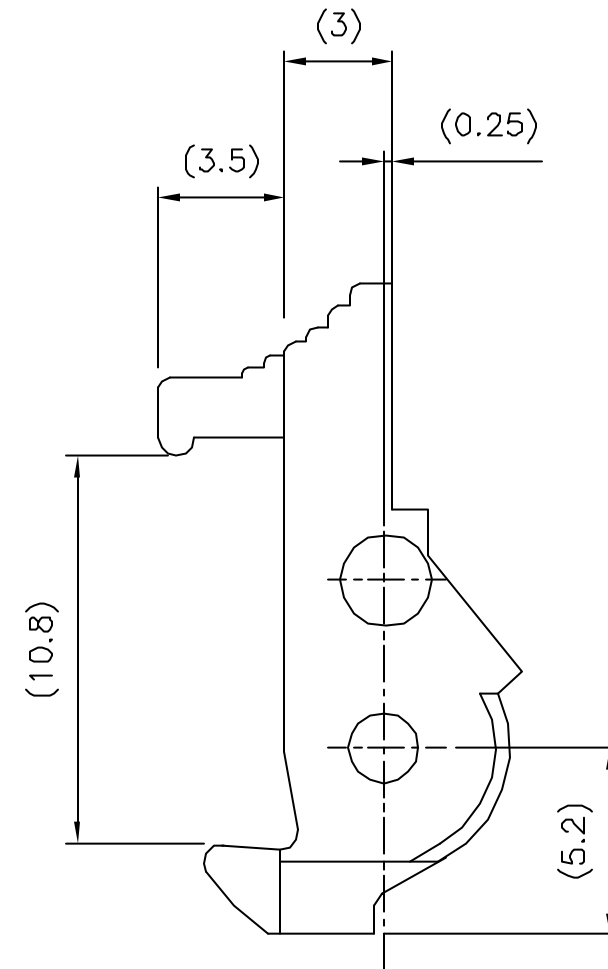
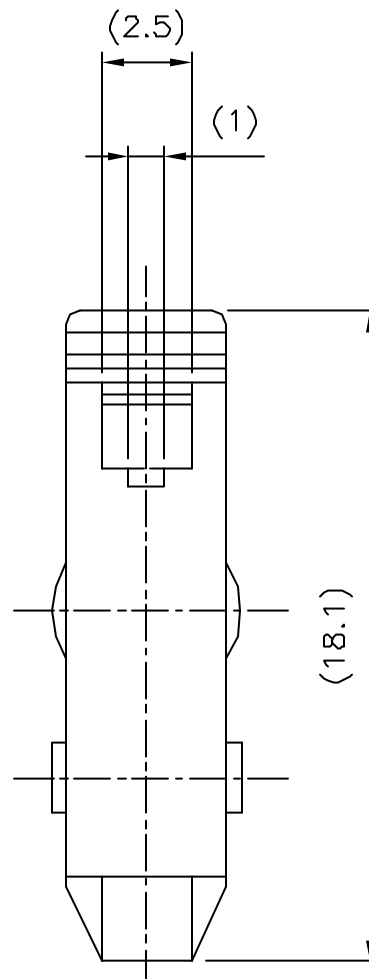
PRODUCT NUMBER
67046-X01LF

INDICATES THE PRODUCT IS RoHS
COMPATIBLE, SEE NOTE 3

CODE	COLOUR
0	GREY
1	BLUE

NOTES:

1. MOLDING MATERIAL : 30% GLASSFIBER POLYESTER,
FLAME RETARDANT PER UL-94-V0
COLOR : GREY, OR BLUE (SEE TABLE)
2. 0.08 MAX. FLASH ALLOWED ON SPLIT LINE
3. RoHS COMPATIBLE PRODUCT
 - a - LABELLING:
 - MEETS PACKAGING SPECS AS PER GS-14-920
 - b - LEGAL STATEMENT : SEE GS-22-008
 - c - THE PRODUCT IS NOT INTENDED TO BE EXPOSED
TO MANUFACTURING SOLDER PROCESS



mat'l. code SEE NOTE 1				tolerances unless otherwise specified		CUSTOMER COPY	FCI ELECTRONICS www.fciconnect.com	
ltr	ecn no	dr	date	Linear	.x	±0.3	projection 	title EJECTOR LATCH 10.8 LOW PROFIL
A	F50863	JMC	95.11.21		.xx	±0.15		
B	F05-0257	LMU	05.10.11	angles	.xxx	±0.05		product family QKIE HDR
C	F06-0274	LMU	06.10.18		dr	L.MULIN		
				engr	J.COMPAGNON	05.10.11	scale 10:1	sheet 1 of 1
				chr				
				appd	JM.C	05.10.11		
sheet index	revision sheet							