

STANDARD BEND PROTECTION

Polyamide (PA)

- IP68 (NEMA1, 2, 3, 3R, 4, 4X, 5, 6, 12, 13).
- PG, NPT standard. Metric available.
- Integral Sealing Ridges (Only PG7 to PG21 and NPT3/8 to NPT3/4). Order Seal Rings separately if required.
- Standard Color: Light Gray and Black.

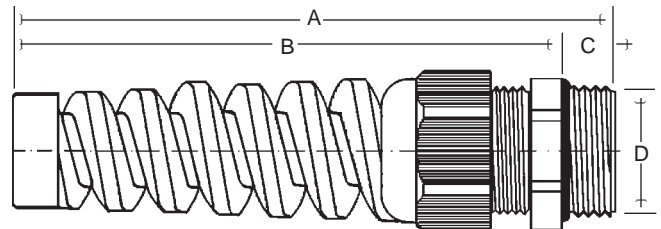
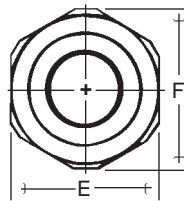


Temperature Ranges	
Body	Sealing Sleeve
Polyamide (PA)	Neoprene (NE)
-20 to 100°C (-4 to 212°F)	-40 to 100°C (-40 to 212°F)

Polyamide (PA) with Neoprene (NE) Sealing Sleeve

Liquid Tight Strain Reliefs (Cord Grips)									Seal Rings ³ Polyethylene (PE)		Locknuts ² Polyamide (PA)			
Type	NE	Cat. No.	Cat. No.		Std. Pk.	Cable Dia.		Mtg. Hole Dia. ¹	Nearest Drill Size	Cat. No. Opaque	Std. Pk.	Cat. No.		Std. Pk.
			Lt. Gray	Black		mm	(in.)					mm	(in.)	
PG7-SBPA - <input type="checkbox"/>	<input type="checkbox"/>	NE 06	80.300	80.310	50	3.5 - 6.5	(.14 - .26)	13.0 (.51)	33/64	86.600	100	86.000	86.021	100
PG9-SBPA - <input type="checkbox"/>	<input type="checkbox"/>	NE 08	80.301	80.311	50	4.0 - 8.0	(.16 - .31)	15.5 (.61)	39/64	86.601	100	86.001	86.022	100
PG11-SBPA - <input type="checkbox"/>	<input type="checkbox"/>	NE 10	80.302	80.312	50	5.0 - 10.0	(.20 - .39)	19.0 (.74)	3/4	86.602	100	86.002	86.023	100
PG13.5-SBPA - <input type="checkbox"/>	<input type="checkbox"/>	NE 12	80.303	80.313	50	6.0 - 12.0	(.24 - .47)	21.0 (.82)	53/64	86.603	100	86.003	86.024	100
PG16-SBPA - <input type="checkbox"/>	<input type="checkbox"/>	NE 14	80.304	80.314	25	10.0 - 14.0	(.39 - .55)	23.0 (.90)	29/32	86.604	50	86.004	86.025	50
PG21-SBPA - <input type="checkbox"/>	<input type="checkbox"/>	NE 18	80.305	80.315	25	13.0 - 18.0	(.51 - .71)	29.0 (1.14)	1-9/64	86.605	50	86.005	86.026	50
NPT3/8-SBPA - <input type="checkbox"/>	<input type="checkbox"/>	NE 10	80.306	80.316	50	5.0 - 10.0	(.20 - .39)	17.5 (.69)	11/16	80.602	50	86.061	86.081	50
NPT1/2-SBPA - <input type="checkbox"/>	<input type="checkbox"/>	NE 14	80.307	80.317	50	10.0 - 14.0	(.39 - .55)	21.5 (.85)	27/32	80.603	50	86.062	86.082	50
NPT3/4-SBPA - <input type="checkbox"/>	<input type="checkbox"/>	NE 18	80.308	80.318	25	13.0 - 18.0	(.51 - .71)	27.0 (1.06)	1-1/16	80.605	25	86.063	86.083	25

Body Color, Example: Light Gray or Black



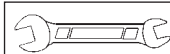
Dimensions mm (in.)

Size	A	B	C	D	E	F
PG7	68.0 (2.67)	60.0 (2.36)	8.0 (.31)	12.5 (.49)	15.0	16.5 (.65)
PG9	80.0 (3.14)	72.0 (2.83)	8.0 (.31)	15.2 (.59)	19.0	21.0 (.82)
PG11	92.0 (3.62)	84.0 (3.30)	8.0 (.31)	18.6 (.73)	22.0	24.4 (.96)
PG13.5	104.5 (4.11)	95.5 (3.75)	9.0 (.35)	20.4 (.80)	24.0	26.6 (1.05)
PG16	119.0 (4.68)	109.0 (4.29)	10.0 (.39)	22.5 (.88)	27.0	30.0 (1.18)
PG21	138.0 (5.43)	128.0 (5.03)	11.0 (.43)	28.3 (1.11)	33.0	36.6 (1.44)
NPT3/8"	92.0 (3.62)	84.0 (3.30)	15.0 (.59)	17.2 (.68)	22.0	24.3 (.96)
NPT1/2"	119.0 (4.68)	109.0 (4.29)	15.0 (.59)	21.3 (.84)	27.0	29.6 (1.17)
NPT3/4"	138.0 (5.43)	128.0 (5.03)	15.0 (.59)	26.7 (1.05)	33.0	36.1 (1.42)

¹ For installation into nonthreaded holes with Locknuts. Please refer to page 5 for installation instructions.

² Order Locknuts separately if required. Please refer to page 54 for more information.

³ Order Seal Rings separately if required. Please refer to page 52 for more information.



Installation
To install, we recommend the use of Socket (Refer to page 53), Metric Open-end or Adjustable Wrenches. Please refer to column "E" in the Dimensions Table for sizes.

HIGH PERFORMANCE STRAIGHT-THROUGH

Brass, Nickel Plated (BN)

- IP68 (NEMA 1, 2, 3, 3R, 4, 4X, 5, 6, 12, 13) / 10 Bar (140 psi).
- PG standard.
- Preinstalled Perbunan (PR) or Silicone (SI) Seal Ring.
- Long Thread 15mm (.59 in.) available.
- Order Locknuts separately if required.



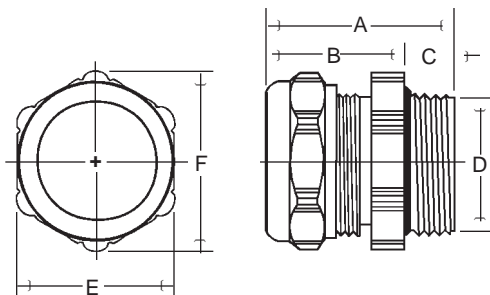
Brass, Nickel Plated (BN) with PVC Polyvinylchloride (PV) Tubular Sealing Insert

Liquid Tight Strain Reliefs (Cord Grips)

Body Material	Brass, Nickel Plated (BN)
Body Temperature Range	-40 to 300° C (-40 to 572°F)
Sealing Insert Material	PVC Polyvinylchloride (PV)
Sealing Insert Temperature Range	-20 to 80°C (-4 to 176°F)
Sealing Insert Color	Multi
Seal Ring Material	Perbunan (PR)
Seal Ring Temperature Range	-20 to 120°C (-4 to 248°F)

Type	Std. Pk.	Cable Dia. mm	(in.)	Mtg. Hole Dia. ¹ mm	(in.)	Nearest Drill Size	Cat. No.	Sealing Insert Color	
PG7-PSBN-	06	50	4.0 - 6.5	(.16 - .26)	13.0	(.51)	33/64	70.300	Yellow
PG9-PSBN-	08	50	5.0 - 8.0	(.20 - .31)	15.5	(.61)	39/64	70.301	Gray
PG9-PSBN-	09	50	6.5 - 9.5	(.26 - .37)	15.5	(.61)	39/64	70.302	Black
PG11-PSBN-	08	50	5.0 - 8.0	(.20 - .31)	19.0	(.75)	3/4	70.303	Gray
PG11-PSBN-	09	50	6.5 - 9.5	(.26 - .37)	19.0	(.75)	3/4	70.304	Black
PG11-PSBN-	10	50	7.0 - 10.5	(.28 - .41)	19.0	(.75)	3/4	70.305	Green
PG13.5-PSBN-	09	50	6.5 - 9.5	(.26 - .37)	21.0	(.83)	53/64	70.306	Black
PG13.5-PSBN-	10	50	7.0 - 10.5	(.28 - .41)	21.0	(.83)	53/64	70.307	Green
PG13.5-PSBN-	13	50	9.0 - 13.0	(.35 - .51)	21.0	(.83)	53/64	70.308	Red
PG16-PSBN-	10	25	7.0 - 10.5	(.28 - .41)	23.0	(.91)	29/32	70.309	Green
PG16-PSBN-	13	25	9.0 - 13.0	(.35 - .51)	23.0	(.91)	29/32	70.310	Red
PG16-PSBN-	15	25	11.5 - 15.5	(.45 - .61)	23.0	(.91)	29/32	70.311	White
PG21-PSBN-	15	25	11.5 - 15.5	(.45 - .61)	29.0	(1.14)	1-9/64	70.312	White
PG21-PSBN-	18	25	14.0 - 18.0	(.55 - .71)	29.0	(1.14)	1-9/64	70.313	Blue
PG21-PSBN-	20	25	17.0 - 20.5	(.67 - .81)	29.0	(1.14)	1-9/64	70.314	Brown
PG29-PSBN-	25	20	20.0 - 25.0	(.79 - .98)	37.5	(1.48)	1-31/64	70.315	Orange
PG29-PSBN-	28	20	24.0 - 28.0	(.94 - 1.10)	37.5	(1.48)	1-31/64	70.316	Light Yellow
PG36-PSBN-	32	10	27.0 - 32.0	(1.06 - 1.26)	47.5	(1.87)	1-7/8	70.317	Dark Gray
PG36-PSBN-	36	10	32.0 - 36.0	(1.26 - 1.42)	47.5	(1.87)	1-7/8	70.318	Rose
PG42-PSBN-	40	5	36.0 - 40.0	(1.42 - 1.57)	54.5	(2.15)	2-5/32	70.319	White
PG48-PSBN-	44	5	39.0 - 44.0	(1.54 - 1.73)	60.0	(2.36)	2-3/8	70.320	White

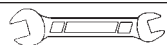
Sealing Insert Material. Example: PVC Polyvinylchloride **PM** or Santoprene **ST** or TPE Polyolefin **TP** or Silicone **SI**



Dimensions mm (in.)

Size	A	B	C	D	E	F
PG7	25.0 (.98)	20.0 (.79)	5.0 (.20)	12.5 (.49)	14.0	15.5 (.61)
PG9	26.0 (1.02)	20.0 (.79)	6.0 (.24)	15.2 (.60)	17.0	18.9 (.74)
PG11	26.0 (1.02)	20.0 (.79)	6.0 (.24)	18.6 (.73)	20.0	22.2 (.87)
PG13.5	27.5 (1.08)	21.0 (.83)	6.5 (.26)	20.4 (.80)	22.0	24.4 (.96)
PG16	27.5 (1.08)	21.0 (.83)	6.5 (.26)	22.5 (.89)	24.0	26.7 (1.05)
PG21	32.0 (1.26)	25.0 (.98)	7.0 (.28)	28.3 (1.11)	30.0	33.5 (1.32)
PG29	35.0 (1.38)	27.0 (1.06)	8.0 (.31)	37.0 (1.46)	40.0	43.5 (1.71)
PG36	37.0 (1.46)	28.0 (1.10)	9.0 (.35)	47.0 (1.85)	50.0	54.0 (2.24)
PG42	40.0 (1.57)	30.0 (1.18)	10.0 (.39)	54.0 (2.13)	57.0	61.0 (2.40)
PG48	40.0 (1.57)	30.0 (1.18)	10.0 (.39)	59.3 (2.33)	64.0	69.0 (2.72)

¹ For installation into nonthreaded holes with Locknuts. Please refer to page 5 for installation instructions.



Installation

To install, we recommend the use of Socket (Refer to page 53), Metric Open-end or Adjustable Wrenches. Please refer to column "E" in the Dimensions Table for sizes.

HIGH PERFORMANCE EMI / RFI

Brass, Nickel Plated (BN)

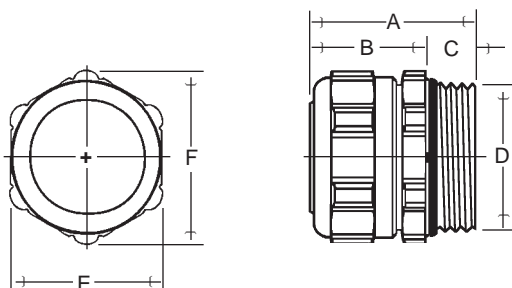
Provide sealing and strain relief plus shielding against electromagnetic and radio frequency interference. For more information about EMI / RFI Cord Grips, please refer to page 26.

- IP68 (NEMA 1, 2, 3, 3R, 4, 4X, 5, 6, 12, 13) / 10Bar (140 psi).
- PG standard.
- Preinstalled Perbunan (PR) Seal Ring.
- Order EMI / RFI or regular Locknuts separately if required. Please refer to pages 26 for general information and page 54 for ordering.



Brass, Nickel Plated (BN) with Santoprene (ST) Tubular Sealing Insert

Liquid Tight Strain Reliefs (Cord Grips)											
Body Material											
Body Temperature Range											
Sealing Insert Material											
Temperature Range											
Sealing Insert Color											
Seal Ring Material											
Seal Ring Temperature Range											
Type	Std. Pk.	Cable Dia. mm	Cable Dia. (in.)	Shield Dia. Min. mm	Shield Dia. Min. (in.)	Shield Dia. Min. mm	Shield Dia. Min. (in.)	Mtg. Hole Dia. ¹ mm	Mtg. Hole Dia. ¹ (in.)	Nearest Drill Size	Cat.No.
PG9-STBN-BNST 06	5	4.0 - 6.0	(.16- .24)	1.5	(.06)	4.0	(.16)	15.5	(.61)	39/64	71.300
PG9-STBN-BNST 09	5	7.0 - 9.5	(.27- .37)	1.5	(.06)	6.5	(.26)	15.5	(.61)	39/64	71.301
PG11-STBN-BNST 06	5	6.0 - 8.0	(.24- .31)	3.0	(.12)	7.0	(.28)	19.0	(.75)	3/4	71.302
PG11-STBN-BNST 09	5	6.0 - 9.5	(.24- .37)	3.5	(.14)	8.0	(.31)	19.0	(.75)	3/4	71.303
PG11-STBN-BNST 10	5	8.0 - 10.5	(.31- .41)	4.0	(.16)	8.5	(.33)	19.0	(.75)	3/4	71.304
PG13.5-STBN-BNST 06	5	4.0 - 6.0	(.16- .24)	2.5	(.10)	6.0	(.24)	21.0	(.83)	53/64	71.305
PG13.5-STBN-BNST 09	5	6.0 - 9.5	(.24- .37)	5.0	(.20)	8.0	(.31)	21.0	(.83)	53/64	71.306
PG13.5-STBN-BNST 10	5	8.0 - 10.5	(.31- .41)	5.0	(.20)	8.0	(.31)	21.0	(.83)	53/64	71.307
PG16-STBN-BNST 09	5	6.0 - 9.5	(.24- .37)	6.0	(.24)	9.0	(.35)	23.0	(.91)	29/32	71.308
PG16-STBN-BNST 10	5	8.0 - 10.5	(.31- .41)	6.0	(.24)	9.0	(.35)	23.0	(.91)	29/32	71.309
PG16-STBN-BNST 11	5	10.0 - 11.5	(.39- .45)	6.5	(.26)	10.0	(.39)	23.0	(.91)	29/32	71.310
PG16-STBN-BNST 14	5	10.0 - 14.0	(.39- .55)	8.0	(.31)	12.0	(.47)	23.0	(.91)	29/32	71.311
PG16-STBN-BNST 16	5	14.0 - 16.5	(.55- .65)	8.0	(.31)	12.0	(.47)	23.0	(.91)	29/32	71.312
PG21-STBN-BNST 10	3	8.0 - 10.5	(.31- .41)	8.0	(.31)	10.0	(.39)	29.0	(1.14)	1-9/64	71.313
PG21-STBN-BNST 14	3	10.0 - 14.0	(.39- .55)	8.0	(.31)	12.0	(.47)	29.0	(1.14)	1-9/64	71.314
PG21-STBN-BNST 16	3	14.0 - 16.5	(.55- .64)	8.0	(.31)	12.0	(.47)	29.0	(1.14)	1-9/64	71.315
PG21-STBN-BNST 18	3	15.0 - 18.0	(.59- .71)	12.5	(.49)	17.5	(.69)	29.0	(1.14)	1-9/64	71.316
PG21-STBN-BNST 20	3	17.0 - 20.0	(.67- .79)	12.5	(.49)	17.5	(.69)	29.0	(1.14)	1-9/64	71.317
PG29-STBN-BNST 23	1	19.0 - 23.0	(.74- .90)	15.0	(.59)	21.0	(.83)	37.5	(1.48)	1-31/64	71.318
PG29-STBN-BNST 27	1	22.0 - 27.0	(.86- 1.06)	15.0	(.59)	21.0	(.83)	37.5	(1.48)	1-31/64	71.319
PG36-STBN-BNST 30	1	25.0 - 30.0	(.98- 1.18)	18.0	(.71)	25.0	(.98)	47.5	(1.87)	1-7/8	71.320
PG36-STBN-BNST 32	1	29.0 - 32.0	(1.14- 1.26)	24.0	(.94)	30.0	(1.18)	47.5	(1.87)	1-7/8	71.321
PG42-STBN-BNST 41	1	37.0 - 41.0	(1.45- 1.61)	29.0	(1.14)	33.0	(1.30)	54.5	(2.15)	2-5/32	71.322



Dimensions mm (in.)

Size	A	B	C	D	E	F
PG9	41.0 (1.61)	31.0 (1.22)	10.0 (.39)	15.2 (.60)	24.0	26.7 (1.05)
PG11	41.0 (1.61)	31.0 (1.22)	10.0 (.39)	18.6 (.73)	24.0	26.7 (1.05)
PG13.5	41.0 (1.61)	31.0 (1.22)	10.0 (.39)	20.4 (.80)	24.0	26.7 (1.05)
PG16	43.0 (1.70)	32.0 (1.26)	11.0 (.43)	22.5 (.89)	30.0	33.5 (1.32)
PG21	44.0 (1.73)	34.0 (1.34)	12.0 (.47)	28.3 (1.11)	30.0	33.5 (1.32)
PG29	52.0 (2.05)	39.0 (1.54)	13.0 (.51)	37.0 (1.46)	40.0	43.5 (1.71)
PG36	59.0 (2.32)	45.0 (1.77)	14.0 (.55)	47.0 (1.85)	50.0	54.0 (2.13)
PG42	65.0 (2.56)	50.0 (1.97)	15.0 (.59)	54.0 (2.13)	60.0	65.0 (2.56)

¹ For installation into nonthreaded holes with Locknuts. For additional information please refer to the Installation Worksheet, page 55.



Installation

To install, we recommend the use of Socket (Refer to page 53), Metric Open-end or Adjustable Wrenches. Please refer to column "E" in the Dimensions Table for sizes.

LOCKNUTS

Use Locknuts to install Cord Grips into nonthreaded holes

- PG, NPT standard.
- Metric available.
- Standard color: Light Gray and Black Polyamide (PA), Brass, Nickel Plated (BN) or Stainless Steel (SS).



Polyamide (PA)

Brass, Ni Plated (BN)

Stainless Steel (SS)

EMI / RFI Brass, Ni Plated (BN)

Ordering Information

Temperature Range

-20 to 100°C
(-4 to 212°F)

-40 to 300°C
(-40 to 572°F)

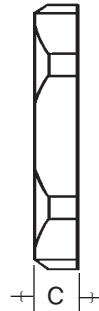
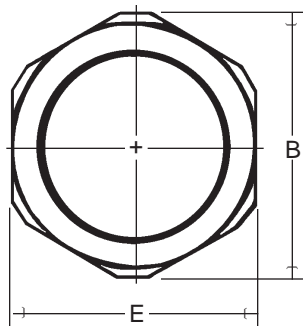
-50 to 500°C
(-65 to 932°F)

-40 to 300°C
(-40 to 572°F)

Size	AL	Cat. No. Gray	Cat. No. Black	Std. Pk.	Cat. No.	Std. Pk.	Cat. No.	Std. Pk.	Cat. No.	Std. Pk.
PG7-	AL	86.000	86.021	100	86.500	100	86.520	10	—	—
PG9-	AL	86.001	86.022	100	86.501	100	86.521	10	86.740	10
PG11-	AL	86.002	86.023	100	86.502	50	86.522	10	86.741	10
PG13.5-	AL	86.003	86.024	100	86.503	50	86.523	10	86.742	10
PG16-	AL	86.004	86.025	50	86.504	50	86.524	5	86.743	5
PG21-	AL	86.005	86.026	50	86.505	50	86.525	5	86.744	5
PG29-	AL	86.006	86.027	25	86.506	25	86.526	2	86.745	2
PG36-	AL	86.007	86.028	10	86.507	10	86.527	2	86.746	2
PG42-	AL	86.008	86.029	5	86.508	5	—	—	—	—
PG48-	AL	86.009	86.030	5	86.509	5	—	—	—	—
NPT3/8-	AL	86.061	86.081	50	86.541	50	—	—	—	—
NPT1/2-	AL	86.062	86.082	50	86.542	50	—	—	—	—
NPT3/4-	AL	86.063	86.083	25	86.543	25	—	—	—	—

Color, Example: Light Gray [LG] or Black [BK] or Brass, Nickel Plated [-] or Stainless Steel [-]
Material, Example: Polyamide [PA] or Brass, Nickel Plated [BN] or Stainless Steel [SS]

Dimensions



E = Width Across Flats (mm.)
B = Width Across "Tips"
C = Thickness

Most Locknuts (Front View)

Most Locknuts (Side View)

EMI / RFI Locknuts (Side View)

Locknut Material	Polyamide (PA)			Brass, Ni Plated (BN)			Stainless Steel (SS)			EMI / RFI Brass, Ni Plated (BN)			
	Size	E	B	C	E	B	C	E	B	C	E	B	C
PG7	19.0	21.0 (.83)	5.0 (.20)	15.0	16.6 (.65)	2.8 (.11)	17.0	21.1 (.83)	3.0 (.12)	—	—	—	—
PG9	22.0	24.0 (.94)	5.0 (.20)	18.0	20.0 (.79)	2.8 (.11)	19.0	21.1 (.83)	3.0 (.12)	17.0	18.5 (.73)	6.0 (.24)	—
PG11	24.0	26.0 (1.02)	5.0 (.20)	21.0	23.5 (.93)	3.0 (.19)	22.0	22.3 (.88)	3.0 (.12)	22.0	24.4 (.96)	6.0 (.24)	—
PG13.5	27.0	29.0 (1.14)	6.0 (.24)	23.0	25.5 (1.00)	3.0 (.19)	24.0	26.8 (1.05)	3.0 (.12)	24.0	26.7 (1.05)	6.0 (.24)	—
PG16	30.0	33.0 (1.30)	6.0 (.24)	26.0	29.0 (1.14)	3.0 (.19)	27.0	30.2 (1.19)	3.0 (.12)	26.0	28.8 (1.13)	6.0 (.24)	—
PG21	36.0	39.0 (1.54)	7.0 (.28)	32.0	35.5 (1.40)	3.5 (.14)	32.0	35.8 (1.41)	3.5 (.14)	35.0	38.5 (1.52)	7.0 (.28)	—
PG29	46.0	50.0 (1.97)	7.0 (.28)	41.0	45.0 (1.77)	4.0 (.16)	41.0	45.7 (1.80)	4.0 (.16)	40.0	43.5 (1.71)	7.0 (.28)	—
PG36	60.0	66.0 (2.60)	8.0 (.32)	51.0	56.0 (2.20)	5.0 (.20)	50.0	55.8 (2.19)	5.0 (.20)	50.0	54.0 (2.13)	7.0 (.28)	—
PG42	65.0	73.0 (2.87)	8.0 (.32)	60.0	65.0 (2.56)	5.0 (.20)	—	—	—	—	—	—	—
PG48	70.0	78.0 (3.07)	8.0 (.32)	64.0	69.0 (2.72)	5.5 (.22)	—	—	—	—	—	—	—
NPT3/8"	22.0	24.0 (.94)	5.0 (.20)	17.0	—	3.0 (.19)	—	—	—	—	—	—	—
NPT1/2"	27.0	29.0 (1.14)	6.0 (.24)	24.0	—	3.0 (.19)	—	—	—	—	—	—	—
NPT3/4"	36.0	39.0 (1.54)	7.0 (.28)	30.0	—	3.5 (.14)	—	—	—	—	—	—	—