

Material:

Body: Nickel-plated brass
 Seal: Santoprene
 O-ring: Perbunan

Characteristic feature:

PG thread

Technical properties:

- EMC protection due to pressure rings and circular spring
- Gas and water-tight
- Completely twist protected

Applications:

- Machines and devices
- Measuring and control engineering
- Plant installations

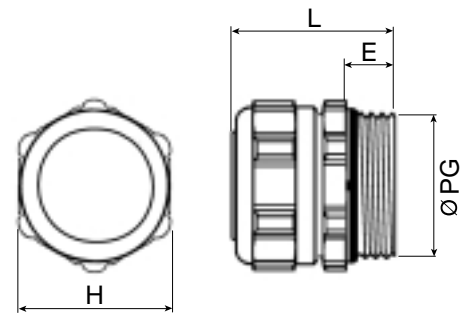


Thread Size	Dimensions			ØPG mm
	H mm	E mm	L mm	
PG9	20	6	34	15.2
PG11	24	10	41	18.6
PG13.5	24	10	41	20.4
PG16	30	11	43	22.5
PG21	30	12	44	28.3
PG29	40	13	53	37.0
PG36	50	14	61	47.0
PG42	60	15	65	54.0

Temperature Range MS
 -40 to 135° C (-40 to 275° F)



Outer thread	Cable Clamping range mm	Shield Clamping range mm	Cat. No.	Std. Pk.
PG				
PG 9	4 - 6	2.5 - 6	4266003	25
PG 9	6.5 - 9.5	2.5 - 8.5	4266004	25
PG 11	4 - 6	3 - 6	4266006	25
PG 11	6 - 9	3.5 - 7.5	4266007	25
PG 11	7 - 10.5	4 - 8.5	4266008	25
PG 13.5	4 - 6	4 - 6	4266010	25
PG 13.5	6 - 9	3.5 - 7.5	4266011	25
PG 13.5	7 - 10.5	4 - 8	4266013	25
PG 16	6 - 9.5	6 - 9	4266015	25
PG 16	6 - 10.5	6 - 9	4266014	25
PG 16	8 - 12	6 - 10	4266018	25
PG 16	10 - 14	9 - 13	4266016	25
PG 16	14 - 18	9 - 13	4266020	25
PG 21	6 - 10.5	6 - 10	4266023	20
PG 21	10 - 14	9 - 13	4266021	20
PG 21	14 - 18	9 - 13	4266024	20
PG 21	14 - 18	12.5 - 17.5	4266025	20
PG 21	17 - 20	12 - 18	4266022	20
PG 29	19 - 23	15 - 21	4266028	20
PG 29	22 - 27	15 - 21	4266029	20
PG 36	25 - 29	18 - 25.5	4266031	10
PG 36	29 - 32	24 - 31	4266033	10
PG 42	37 - 41	29 - 33	4266035	10



Material:

Body: Nickel-plated brass
 Seal: Santoprene
 O-ring: Perbunan

Characteristic feature:

PG thread

Technical properties:

- EMC protection due to pressure rings and circular spring
- Gas and water-tight
- Completely twist protected

Applications:

- Machines and devices
- Measuring and control engineering
- Plant installations

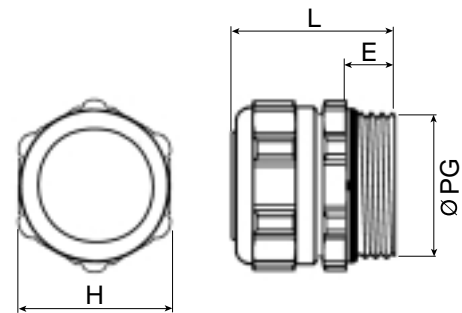


Thread Size	Dimensions			ØPG mm
	H mm	E mm	L mm	
PG9	20	6	34	15.2
PG11	24	10	41	18.6
PG13.5	24	10	41	20.4
PG16	30	11	43	22.5
PG21	30	12	44	28.3
PG29	40	13	53	37.0
PG36	50	14	61	47.0
PG42	60	15	65	54.0

Temperature Range MS
 -40 to 135° C (-40 to 275° F)



Outer thread	Cable Clamping range mm	Shield Clamping range mm	Cat. No.	Std. Pk.
PG				
PG 9	4 - 6	2.5 - 6	4266003	25
PG 9	6.5 - 9.5	2.5 - 8.5	4266004	25
PG 11	4 - 6	3 - 6	4266006	25
PG 11	6 - 9	3.5 - 7.5	4266007	25
PG 11	7 - 10.5	4 - 8.5	4266008	25
PG 13.5	4 - 6	4 - 6	4266010	25
PG 13.5	6 - 9	3.5 - 7.5	4266011	25
PG 13.5	7 - 10.5	4 - 8	4266013	25
PG 16	6 - 9.5	6 - 9	4266015	25
PG 16	6 - 10.5	6 - 9	4266014	25
PG 16	8 - 12	6 - 10	4266018	25
PG 16	10 - 14	9 - 13	4266016	25
PG 16	14 - 18	9 - 13	4266020	25
PG 21	6 - 10.5	6 - 10	4266023	20
PG 21	10 - 14	9 - 13	4266021	20
PG 21	14 - 18	9 - 13	4266024	20
PG 21	14 - 18	12.5 - 17.5	4266025	20
PG 21	17 - 20	12 - 18	4266022	20
PG 29	19 - 23	15 - 21	4266028	20
PG 29	22 - 27	15 - 21	4266029	20
PG 36	25 - 29	18 - 25.5	4266031	10
PG 36	29 - 32	24 - 31	4266033	10
PG 42	37 - 41	29 - 33	4266035	10



Cable Gland, EMC, Nickel-Plated Brass

Material:

Body: Nickel-plated brass

Seal: Perbunan N

Sealing ring for outer thread: Nitril

Characteristic feature:

PG thread

Technical properties:

- Shield contact through clamping chuck with integrated clamp protection
- Gas and water-tight
- Completely twist protected
- Combinable with various sealing inserts

Applications:

- Machines and devices
- Measuring and control engineering
- Plant installations

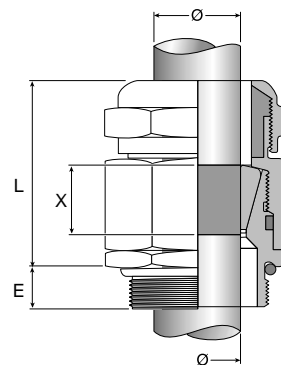
Temperature Range MS
-20 to 100° C (-4 to 212° F)

PROTECTION
IP68
RATING



Outer thread	Cable Clamping range mm	Shield Clamping range mm	Cat. No.	Std. Pk.
PG				
PG 9	6 - 8	3.1 - 4	4276040	25
PG 9	7.5 - 10	4.1 - 5	4276050	25
PG 9	7.5 - 10	5.1 - 6	4276060	25
PG 11	7 - 10	6.1 - 7	4276070	25
PG 11	8 - 12	7.1 - 8	4276080	25
PG 11	8 - 12	8.1 - 9	4276090	25
PG 16	11 - 15	9.1 - 10	4276100	25
PG 16	11 - 15	10.1 - 11	4276110	25
PG 16	14 - 17	11.1 - 12	4276120	25
PG 16	14 - 17	12.1 - 13	4276130	25
PG 21	15 - 20.5	13.1 - 14	4276140	25
PG 21	15 - 20.5	14.1 - 15	4276150	25
PG 21	15 - 20.5	15.1 - 16	4276160	25
PG 21	19 - 22	16.1 - 17	4276170	25
PG 21	19 - 22	17.1 - 18	4276180	25
PG 29	20 - 26	18.1 - 19.5	4276195	20
PG 29	20 - 26	19.6 - 21	4276210	20
PG 29	22 - 28	21.1 - 22.5	4276225	20
PG 29	26 - 32	22.6 - 24	4276240	20
PG 36	25 - 35	23.1 - 25	4276250	10
PG 36	25 - 35	25.1 - 27	4276270	10
PG 36	30 - 35	27.1 - 29	4276290	10
PG 48	31 - 35	29.1 - 31	4276310	10
PG 48	35 - 45	31.1 - 33	4276330	10
PG 48	35 - 45	33.1 - 35	4276350	10
PG 48	35 - 45	35.1 - 37	4276370	10

Thread Size	Dimensions			
	L mm	E mm	H mm	X mm
PG9	18	6	26	13
PG11	20/22	8	30	13
PG16	24	8	33	13
PG21	32	8	38	16
PG29	38	10	43	16
PG36	50	12	55	22
PG48	64	15	63	27

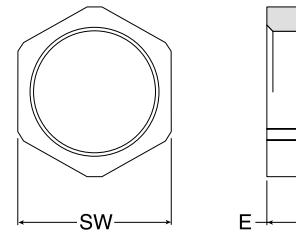


Lock Nuts, Polyamide

Material:
Polyamide 6
25 % Glass fiber Reinforced

Characteristic feature:
PG / metric and NPT thread

Temperature Range PA
-30 to 120° C (-22 to 248° F)



Thread	Thickness (E) mm	SW mm	Cat. No. Light grey	Cat. No. Black	Std. Pk.
PG (DIN 46 320)					
PG 7	5	19	7211881	7211851	50
PG 9	5	22	7211882	7211852	50
PG 11	5	24	7211883	7211853	50
PG 13.5	6	27	7211884	7211854	50
PG 16	6	30	7211885	7211855	50
PG 21	6.5	36	7211886	7211856	20
PG 29	7.5	46	7211887	7211857	20
PG 36	8	60	7211888	7211858	10
PG 42	9	65	7211889	7211859	5
PG 48	9.5	70	7211890	7211860	5
Metric					
M 12 x 1.5	5	19	7211979	7211974	50
M 16 x 1.5	5	22	7211980	7211975	50
M 20 x 1.5	5	24	7211981	7211976	50
M 25 x 1.5	6	30	7211982	7211977	50
M 32 x 1.5	7.5	38	7211983	7211978	50
M 40 x 1.5	8	50	7211984	7211990	20
M 50 x 1.5	9	60	7211985	7211991	10
M 63 x 1.5	10	75	7211986	7211992	5
NPT					
NPT 3/8"	5	22	7211485	7211495	50
NPT 1/2"	6	27	7211486	7211496	20
NPT 3/4"	7	36	7211487	7211497	20
NPT 1"	7	41	7211488	7211498	20

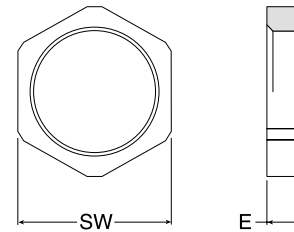
Material:
Polystyrene

Characteristic feature:
PG and Metric thread

Temperature Range PS
-20 to 70° C (-4 to 158° F)



Thread	Thickness (E) mm	SW mm	Cat. No. Light grey	Cat. No. Black	Std. Pk.
PG (DIN 46 320)					
PG 7	5	19	7211107	7211060	50
PG 9	5	22	7211109	7211061	50
PG 11	5	24	7211111	7211062	50
PG 13	6	27	7211113	7211063	50
PG 16	6	30	7211116	7211064	50
PG 21	6.5	36	7211121	7211065	20
PG 29	7.5	46	7211129	7211066	20
PG 36	8	60	7211130	7211067	10
PG 42	9	65	7211131	7211068	5
PG 48	9.5	70	7211132	7211069	5
Metric					
M 12 x 1.5	5	19	7212212	7212112	50
M 16 x 1.5	5	22	7212216	7212116	50
M 20 x 1.5	5	24	7212220	7212120	50
M 25 x 1.5	6	30	7212225	7212125	20
M 32 x 1.5	7.5	38	7212232	7212132	20
M 40 x 1.5	8	50	7212240	7212140	20
M 50 x 1.5	9	60	7212250	7212150	10
M 63 x 1.5	10	75	7212263	7212163	5



Lock Nuts, Nickel-Plated Brass

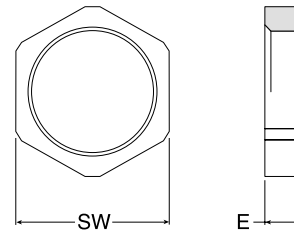
Material:
Nickel-plated brass

Characteristic feature:
PG and Metric thread



Temperature Range MS -40 to 300° C (-40 to 572° F)
--

Thread	Thickness (E) mm	SW mm	Cat. No.	Std. Pk.
PG (DIN 46 320)				
PG 7	2.9	15	6000070	100
PG 9	2.9	18	6000096	100
PG 11	3.1	21	6000118	100
PG 13.5	3.1	23	6000134	100
PG 16	3.1	26	6000169	100
PG 21	3.6	32	6000215	100
PG 29	4.1	41	6000290	100
PG 36	5.1	51	6000363	50
PG 42	5.1	60	6000428	25
PG 48	5.6	64	6000487	25
Metric				
M 12 x 1.5	3	15	6004121	50
M 16 x 1.5	3	19	6004164	50
M 20 x 1.5	3.5	24	6004202	50
M 25 x 1.5	3.5	30	6004253	25
M 32 x 1.5	4.5	36	6004326	20
M 40 x 1.5	5	46	6004407	10
M 50 x 1.5	5.5	55	6004504	10
M 63 x 1.5	6	70	6004636	5



Material:
Nickel-plated brass

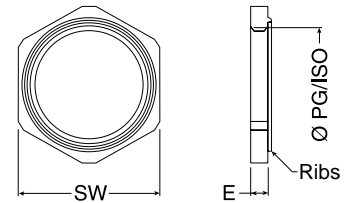
Characteristic feature:
PG and Metric thread

Applications:
EMC applications



Temperature Range MS
-40 to 300° C (-40 to 572° F)

Thread	Thickness (E) mm	SW mm	Cat. No.	Std. Pk.
PG				
PG 7	2.9	15	6011007	50
PG 9	2.9	18	6011009	50
PG 11	3.1	21	6011011	50
PG 13.5	3.1	23	6011013	50
PG 16	3.1	26	6011016	50
PG 21	3.6	32	6011021	20
PG 29	4.1	41	6011029	20
PG 36	5.1	51	6011036	10
PG 42	5.1	60	6011042	10
PG 48	5.6	64	6011048	10
Metric				
M 12 x 1.5	3	15	6011112	50
M 16 x 1.5	3	20	6011116	50
M 20 x 1.5	3.5	24	6011120	50
M 25 x 1.5	3.5	30	6011125	25
M 32 x 1.5	4.5	35	6011132	20
M 40 x 1.5	4.5	45	6011140	10
M 50 x 1.5	5.5	55	6011150	10
M 63 x 1.5	6	70	6011163	10



Cable Gland, Polyamide

Material:

Body: Polyamide 6

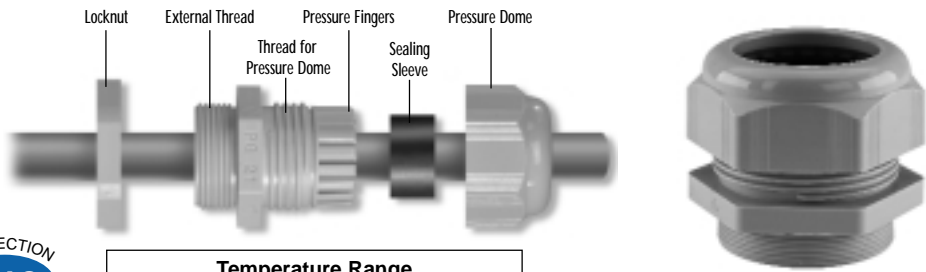
Seal: Neoprene

Technical properties:

- Maximum strain relief through clamping range
- IP 68 achieved without seal rings
- Trapezoidal thread with high torque guarantees tight and permanent fit of the dome nut
- Gas and water-tight

Application field:

- Machines and devices



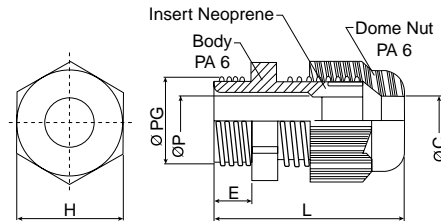
Temperature Range	
PA6	Neoprene
-40 to 100° C	-25 to 100° C
(-40 to 212° F)	(-13 to 212° F)



PG Thread

Outer thread	Clamping range mm	Cat. No. Light Grey	Cat. No. Black	Std. Pk.
PG 7	1.5-5	5309107	5309207	100
PG 7	2.5-6.5	5308707	5308507	100
PG 9	1.5-6	5309109	5309209	50
PG 9	2.5-8	5308709	5308509	50
PG 11	2-7	5309111	5309211	50
PG 11	3.5-10	5308711	5308511	50
PG 13.5	3-9	5309113	5309213	50
PG 13.5	5-12	5308713	5308513	50
PG 16	5-12	5309116	5309216	50
PG 16	7-14	5308716	5308516	50
PG 21	7-16	5309121	5309221	25
PG 21	9-18	5308721	5308521	25
PG 29	11-21	5309129	5309229	20
PG 29	14-25	5308729	5308529	20
PG 36	13-26	5309136	5309236	10
PG 36	18-32	5308736	5308536	10
PG 42	17-31	5309142	5309242	5
PG 42	24-38.5	5308737	5308537	5
PG 48	26-39	5309148	5309248	5
PG 48	35-48	5308738	5308538	5

Thread Size	H mm	PG Dimensions					
		E mm	L mm	ØC mm	ØP mm	ØPG mm	
PG7	15	8	32	6.7	6.8	12.5	
PG9	19	8	35	8.5	8.7	15.2	
PG11	22	8	37	10.5	10.5	18.6	
PG13.5	24	9	39	12.5	12.5	20.4	
PG16	27	10	43	14.5	14.5	22.5	
PG21	33	11	50	18.5	18.5	28.3	
PG29	42	11	53	25.5	25.5	37.0	
PG36	53	13	65	32.5	32.5	47.0	
PG42	60	13	68	39.0	39.0	54.0	
PG48	70	14	70	48.5	48.5	59.3	



NPT Thread

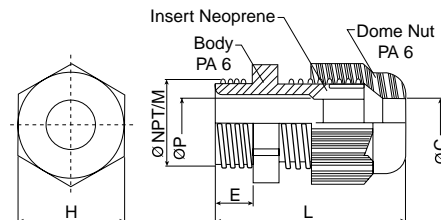
NPT	Clamping range mm	Cat. No.	Cat. No.	Std. Pk.
NPT 3/8"	1.5-6	5308904	5308924	50
NPT 3/8"	2.5-8	5308900	5308920	50
NPT 1/2"	3-9	5308905	5308925	50
NPT 1/2"	5-12	5308901	5308921	50
NPT 3/4"	7-16	5308906	5308926	20
NPT 3/4"	9-18	5308902	5308922	20
NPT 1"	11-21	5308907	5308927	20
NPT 1"	14-25	5308903	5308923	20

Thread Size	H mm	Metric/NPT Dimensions				
		E mm	L mm	ØC mm	ØP mm	ØNPT/M mm
NPT 3/8"	19	11	38	8.5	8.7	17.1
NPT 1/2"	24	14	44	12.5	12.5	21.2
NPT 3/4"	33	15	54	18.5	18.5	26.7
NPT 1"	42	18	60	25.5	25.5	33.3

Metric Thread*

Metric	Clamping range mm	Cat. No.	Cat. No.	Std. Pk.
M 12 x 1.5	1.5-5	5309612	5309712	100
M 12 x 1.5	2.5-6.5	5308950	5308940	100
M 16 x 1.5	2-7	5309616	5309716	50
M 16 x 1.5	2.5-8	5308958	5308948	50
M 16 x 1.5	3.5-10	5308951	5308941	50
M 20 x 1.5	5-12	5309620	5309720	50
M 20 x 1.5	5-12	5308959	5308949	50
M 20 x 1.5	7-14	5308952	5308942	50
M 25 x 1.5	7-16	5309625	5309725	25
M 25 x 1.5	7-14	5308960	5308962	50
M 25 x 1.5	9-18	5308953	5308943	25
M 32 x 1.5	11-21	5309632	5309732	20
M 32 x 1.5	14-25	5308954	5308944	20
M 40 x 1.5	13-26	5309640	5309740	10
M 40 x 1.5	18-32	5308955	5308945	10
M 50 x 1.5	17-31	5309650	5309750	5
M 50 x 1.5	24-38.5	5308956	5308946	5
M 63 x 1.5	26-39	5309663	5309763	5
M 63 x 1.5	35-48	5308957	5308947	5

M12	15	8	32	6.7	6.8	12.0
M16	22	10	39	10.5	10.5	16.0
M20	27	10	43	14.5	14.5	20.0
M25	33	10	49	18.5	18.5	25.0
M32	42	10	52	25.5	25.5	32.0
M40	53	10	62	32.5	32.5	40.0
M50	60	12	67	39.0	39.0	50.0
M63	70	12	68	48.5	48.5	63.0



* Extended Thread available consult Altech

Material:

Body: Nickel-plated brass
 Seal: Neoprene
 Clamping insert: PA 6
 Sealing ring for outer thread: Nitril

Technical properties:

• Seal rings included for PG and Metric sizes

Technical properties:

• Maximum strain relief through clamp range
 • Gas and water-tight

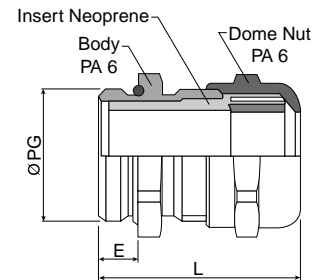
Temperature Range Neoprene
-25 to 100° C (-13 to 212° F)



PG Thread*

Outer thread	Clamping range mm	Cat. No.	Std. Pk.
PG 7	1.5-5	4220351	50
PG 7	2.5-6.5	4220307	50
PG 9	2.5-7	4220352	50
PG 9	4-9.5	4220309	50
PG 11	3-8.5	4220353	50
PG 11	6-11.5	4220311	50
PG 13	4-10	4220354	50
PG 13	7-13	4220313	50
PG 16	5-12	4220355	50
PG 16	8-15	4220316	50
PG 21	8-16	4220356	20
PG 21	11-19	4220321	20
PG 29	11-21	4220357	20
PG 29	16-26	4220329	20
PG 36	16-28	4220358	10
PG 36	22-34.5	4220336	10
PG 42	22-34	4220359	5
PG 42	27-40	4220342	5
PG 48	28-40	4220360	5
PG 48	35-48	4220348	5

Thread Size	H mm	PG Dimensions					
		E mm	L mm	ØC mm	ØP mm	ØPG mm	
PG7	14	5	32	6.7	6.8	12.5	
PG9	17	6	35	8.5	8.7	15.2	
PG11	20	6	37	10.5	10.5	18.6	
PG13	22	6.5	39	12.5	12.5	20.4	
PG16	24	6.5	43	14.5	14.5	22.5	
PG21	30	7	50	18.5	18.5	28.3	
PG29	40	8	53	25.5	25.5	37.0	
PG36	50	9	65	32.5	32.5	47.0	
PG42	58	10	68	39.0	39.0	54.0	
PG48	65	10	70	48.5	48.5	59.3	



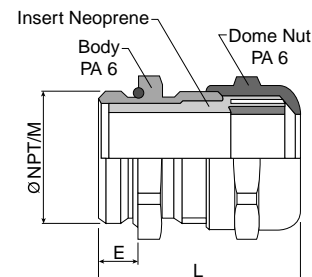
NPT Thread

NPT	Clamping range mm	Cat. No.	Std. Pk.
NPT 3/8"	2.5-7	4220810	50
NPT 3/8"	4-9.5	4220800	50
NPT 1/2"	4-10	4220811	50
NPT 1/2"	7-13	4220801	50
NPT 3/4"	5-13	4220812	20
NPT 3/4"	8-16	4220802	20
NPT 1"	7-17	4220813	5
NPT 1"	11-21	4220803	5

Thread Size	H mm	Metric/NPT Dimensions					
		E mm	L mm	ØC mm	ØP mm	ØNPT/M mm	
NPT 3/8	18	15	38	9.7	10	17.1	
NPT 1/2	23	20	46	13.2	13.5	21.2	
NPT 3/4	28	20	48	16.2	16.5	26.7	
NPT 1	36	25	55	21.5	22	33.3	
M12	14	5	25	6.6	6.6	12.0	
M16	17	5	28	9.7	10	16.0	
M20	22	6	32	13.2	13.5	20.0	
M25	27	7	35	16.2	16.5	25.0	
M32	34	8	38	21.5	22	32.0	
M40	42	8	41	27.5	28	40.0	
M50	55	9	46	35.5	36	50.0	
M63	65	10	54	48.5	50	63.0	

Metric Thread*

Metric	Clamping range mm	Cat. No.	Std. Pk.
M 12 x 1.5	1.5-5	4220712	100
M 12 x 1.5	2.5-6.5	4220612	100
M 16 x 1.5	2.5-7	4220716	50
M 16 x 1.5	4-9.5	4220616	50
M 20 x 1.5	4-10	4220720	50
M 20 x 1.5	7-13	4220620	50
M 25 x 1.5	5-13	4220725	25
M 25 x 1.5	8-16	4220625	25
M 32 x 1.5	7-17	4220732	20
M 32 x 1.5	11-21	4220632	20
M 40 x 1.5	10-22	4220740	10
M 40 x 1.5	15-27	4220640	10
M 50 x 1.5	17-29	4220750	5
M 50 x 1.5	22-35	4220650	5
M 63 x 1.5	28-40	4220763	5
M 63 x 1.5	35-48	4220663	5



* Extended Thread available consult Altech

Cable Gland Industrial, Polystyrene

Material:

Body: Polystyrene
 Seal: Tefabloc
 ECA clamping ring: Polycarbonate
Characteristic feature:
 PG/metric thread
 Extended thread available
 ECA clamping ring

Technical properties:

- Strain relief through ECA clamping ring
- Gas and water-tight
- Completely twist protected
- Combinable with various sealing inserts

Application field:

- Machines and devices
- Measuring and control engineering
- Plant installations

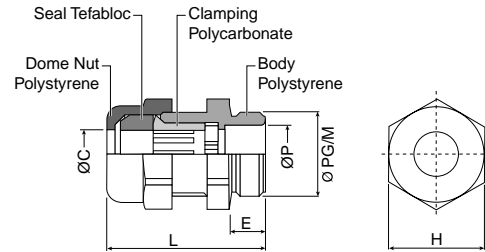
Temperature Range PS -20 to 70° C (-4 to 158° F)



Thread Size	Dimensions					
	H mm	E mm	L mm	ØC mm	ØP mm	ØPG/M mm
PG7	15	8	31	6.5	7.0	12.5
PG9	19	8	32	8.5	9.0	15.2
PG11	22	8	35	11.5	11.0	18.6
PG13.5	24	9	36	12.5	13.5	20.4
PG16	27	10	40	14.5	15.0	22.5
PG21	33	11	44	18.5	19.0	28.3
PG29	42	12	55	25.0	25.0	37.0
PG36	55	18	65	35.0	37.0	47.0
PG42	65	18	67	43.0	44.0	54.0
PG48	70	18	67	51.0	51.0	59.3
M 16x1.5	19	8	32	8.5	9.0	16.0
M 20x1.5/13	24	9	36	12.5	13.5	20.0
M 20x1.5/16	27	10	40	14.5	15.0	20.0
M 25x1.5	33	11	44	18.5	19.0	25.0
M 32x1.5	42	12	55	25.0	25.0	32.0

ECA Clamping Ring Polystyrene

Outer thread	Clamping range mm	Cat. No. Light Grey	Cat. No. Black	Std. Pk.
PG				
PG 7	3-6	5216007	5218007	50
PG 9	5-8	5216009	5218009	50
PG 11	6-10	5216011	5218011	50
PG 13.5	8-12	5216013	5218013	50
PG 16	10-14	5216016	5218016	25
Metric				
M 16 x 1.5	5-8	5216216	5218216	50
M 20 x 1.5/13	8-12	5216220	5218220	50
M 20 x 1.5/16	10-14	5216221	5218221	50



Material:

Body: Polystyrene
 Seal: Tefabloc
Characteristic feature:
 PG/metric thread
 Extended thread available

Technical properties:

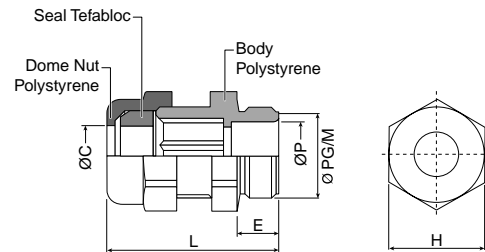
- Gas and water-tight
- Completely twist protected
- Combinable with various sealing inserts

Application field:

- Machines and devices
- Measuring and control engineering
- Plant installations

Short Seal Polystyrene

PG	Clamping range mm	Cat. No. Light Grey	Cat. No. Black	Std. Pk.
PG 7	3-6	5210107	5210507	50
PG 9	4.5-8	5210109	5210509	50
PG 11	5.5-10.5	5210111	5210511	50
PG 13.5	7-12	5210113	5210513	50
PG 16	9-14	5210116	5210516	50
PG 21	11.5-18	5210121	5210521	20
PG 29	16-24.5	5210129	5210529	20
Metric				
M 16 x 1.5	4.5-8	5210816	5210616	50
M 20 x 1.5/13	7-12	5210820	5210620	50
M 20 x 1.5/16	9-14	5210821	5210621	50
M 25 x 1.5	11.5-18	5210825	5210625	20
M 32 x 1.5	16-24.5	5210832	5210632	20



Material:

Body: Polystyrene
 Seal: Santoprene/Nitril
Characteristic feature:
 PG/metric thread
 Extended thread available

Technical properties:

- Gas and water-tight
- Completely twist protected
- Combinable with various sealing inserts

Application field:

- Machines and devices
- Measuring and control engineering
- Plant installations

Long Seal, Two Part Polystyrene

PG	Clamping range mm	Cat. No. Light Grey	Cat. No. Black	Std. Pk.
PG 9	3-8	5321001	5321101	50
PG 11	5-11	5321002	5321102	50
PG 13.5	5-12.5	5321003	5321103	50
PG 16	7-14.5	5321004	5321104	25
PG 21	10-18	5321005	5321105	20
PG 29	14-24	5321006	5321106	20
PG 36	22-32	5321007	5321107	20
PG 42	30-40	5321008	5321108	20
PG 48	34-46	5321009	5321109	20
Metric				
M 16 x 1.5	3-8	5321031	5321131	50
M 20 x 1.5/13	5-12.5	5321032	5321132	50
M 20 x 1.5/16	7-14.5	5321033	5321133	50
M 25 x 1.5	10-18	5321034	5321134	20
M 32 x 1.5	14-24	5321035	5321135	20

