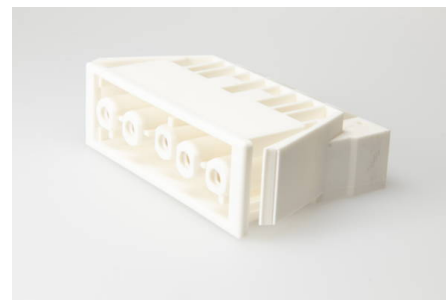




Connectors System AC 166® Panel Mounting

AC 166 GEBU/ 5 white

socket, 5 pole, white, coding: 1 (mains), wall thickness min.: 0.5 mm, wall thickness max.: 1.2 mm, voltage rating: 400 V, current rating: 20 A, cross-section rating: 2.5 mm²



Order Info

reference number (ref. no.)	168855
Applications	Lighting, Installation, Electrical Appliances
PU	100
EAN	4028012102914

Type

type	socket
number of poles	5 pole
clamping units per pole	2
colour	white
coding	1 (mains)
cross-section rating	2.5 mm ²
PE function	yes
protection against incorrect plugging	yes

Technical Data

voltage rating	400 V
current rating	20 A
insulating material	PA 6.6
contact material	brass
core cross-section min.	0.5 mm ²
core cross-section max.	2.5 mm ²
impulse voltage rating	4.0 kV
flammability rating	V-2
max. Ambient Temperature Operation	100 °C
IP code	IP20
IP code when plugged	IP40
type of conductor solid	yes
stripping length	8.0-9.0 mm
wall thickness min.	0.5 mm
wall thickness max.	1.2 mm

core cross-section	2.5 mm ²
Approbation EN61535	AC166-G_Leitungen_EN61535_20121212_20180725_VDE_ENEC_4C
Approbation UL	160_163_AC164_AC166_20011003_20170727_UL_E220480_Sec.1-(
Approbation CSA	AC_160-163-166_166G_20080321_CSA_1997949_Certificate_web.p

Accessories

AC 166 VSE black	169463
AC 166 VSE white	169453