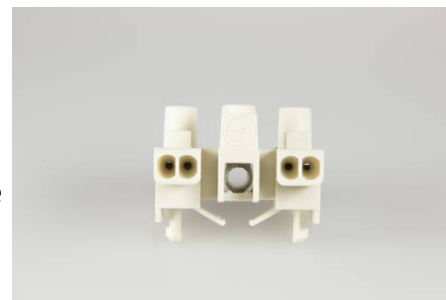




Screw-Screwless Connectors

900 ED FR

terminal block, 3 pole, fixing: screw, clamping units per pole: 2, voltage rating: 450 V, current rating: 13.5 A, cross-section rating external: 2.5 mm², cross-section rating internal: 1.0 mm²



Order Info

reference number (ref. no.)	115113
Applications	Lighting
PU	5,000
EAN	4028012105007

Type

type	terminal block
number of poles	3 pole
clamping units per pole	2
colour	natural
cross-section rating	1.0 / 2.5 mm ²

Technical Data

voltage rating	450 V
current rating	13.5 A
insulating material	PA 6.6
contact material	brass
flammability rating	V-2
max. Ambient Temperature Operation	85 °C
Assembly Contact Screw	0.8x4.0 / \varnothing 0.5 Nm
internal core cross-section max.	1.0 mm ²
internal stripping length	7.0-7.5 mm
external stripping length	8.0-8.5 mm
fixing	screw
internal core cross-section min.	0.5 mm ²
Type of Conductor Solid External	yes
Type of Conductor Flexible External	yes
Type of Conductor Solid Internal	yes
Type of Conductor Stranded Internal	yes
cross-section rating external	2.5 mm ²
cross-section rating internal	1.0 mm ²

Accessories

ZEL 110

196420
