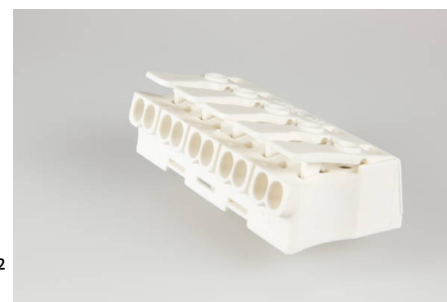




Screwless Connectors  
Luminaire Connectors  
**LK 980-01 RZ/ 5**



terminal block, 5 pole, insulating material: PA 6.6, fixing: catch pin,  
voltage rating: 450 V, current rating: 24 A, cross-section rating: 2.5 mm<sup>2</sup>

**Order Info**

<b>reference number (ref. no.)</b>	044015
<b>Applications</b>	Lighting, Electrical Appliances
<b>PU</b>	500
<b>EAN</b>	4028012113064

**Type**

<b>type</b>	terminal block
<b>number of poles</b>	5 pole
<b>clamping units per pole</b>	2
<b>colour</b>	white
<b>cross-section rating</b>	2.5 mm <sup>2</sup>

**Technical Data**

<b>voltage rating</b>	450 V
<b>current rating</b>	24 A
<b>insulating material</b>	PA 6.6
<b>contact material</b>	Spring Steel, Copper
<b>flammability rating</b>	V-2
<b>max. Ambient Temperature Operation</b>	85 °C
<b>stripping length</b>	8.0-9.0 mm
<b>internal core cross-section max.</b>	1.5 / 2.5 mm <sup>2</sup>
<b>external core cross-section min.</b>	0.5 mm <sup>2</sup>
<b>external core cross-section max.</b>	2.5 mm <sup>2</sup>
<b>fixing</b>	catch pin
<b>internal core cross-section min.</b>	0.5 mm <sup>2</sup>
<b>Type of Conductor Solid External</b>	yes
<b>Type of Conductor Flexible External</b>	yes
<b>Type of Conductor Stranded External</b>	yes
<b>Type of Conductor Solid Internal</b>	yes
<b>Type of Conductor Stranded Internal</b>	yes
<b>Approbation EN60998</b>	LK980-01_EN60998_20070627_20101213_VDE_ENEC_40021343_v
<b>Approbation UL</b>	LK980_20010625_20110411_UL_E63492_1-18_Description_web.pdf

## Accessories

<b>WKZ 980-01</b>	999041
<b>ZEL 110</b>	196420
<b>ZEL 900</b>	196423