

# SMD 916.5 MHz SAW FILTER

AFS916.5S3

APPLICATION: Remote Control



3.8 x 3.8 x 1.5mm

## STANDARD SPECIFICATIONS:

CHARACTERISTICS	UNIT	MIN.	TYP.	MAX.
Center Frequency Fc	MHz	-	916.5	-
Bandwidth	MHz	-	$F_c \pm 3.5$	-
Insertion Loss @ Passband	dB	-	-	4.5
Ripple @ Passband	dB	-	-	2.0
Relative Attenuation				
Fc-45MHz ~ Fc-41MHz	dB	40	-	-
Fc-23MHz ~ Fc-20MHz	dB	30	-	-
Fc+20MHz ~ Fc+23MHz	dB	20	-	-
Fc+41MHz ~ Fc+46MHz	dB	40	-	-
DC Voltage	V	10		
Source Power	dBm	10		
Operating Temperature	°C	-10°C to +60°C		
Storage Temperature	°C	-25°C to +70°C		
Terminating Impedance	-	50 + j57.4Ω		

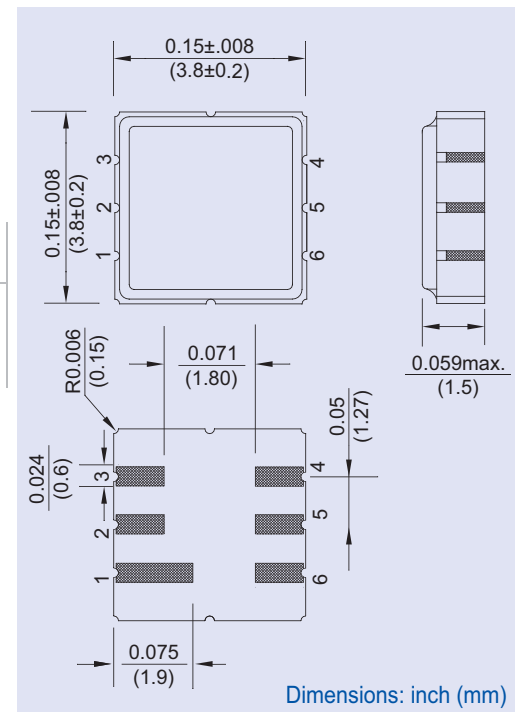
Electrostatic Sensitive Device. Handle with precaution.

## MARKING:

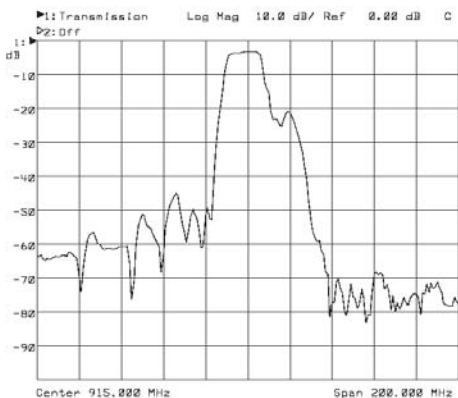
- 916.50 (916.5 Frequency in MHz)
- AF ZYX (ZY: Date code Z for month from A to L; Y for year, i.e. 4 for 2004; X: Traceability code)

PIN NO.	CONNECTIONS
2	Input
5	Output
Others	Ground

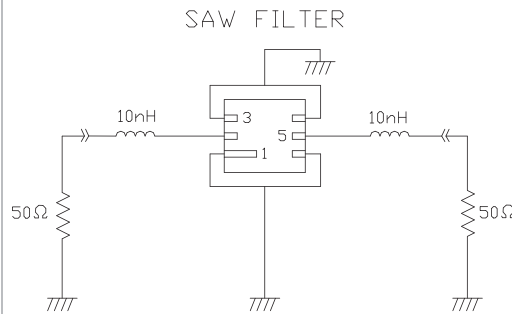
## OUTLINE DRAWING:



## FREQUENCY RESPONSE:



## TEST CIRCUIT:



Please refer to ABRACON's Chip Inductor Series AISC-0603.