

3M™ Fiber Dome Closure FDC 08S

The new compact 3M™ Fiber Dome Closure FDC 08S is a hermetically sealed fiber dome closure for aerial, buried above-grade, and buried below-grade applications. This closure is designed to meet the needs of anyone using fiber optic splice closures in the long haul, metro, local access (DSL, HFC, mobile wireless back haul) and FTTP feeder and distribution networks. It is designed for butt, single or ribbon fiber cable applications.

This compact closure requires no special tools, which can help reduce tooling costs and allows for ease of installation and re-entry into the closure.

The closure features a fixed O-ring sealing system along with an innovative latching mechanism. This combination provides for simple, error-free closure sealing and re-entry.

The fiber dome closure utilizes the external cable assembly module (ECAM) built-in cable entry port system. The ECAM design allows true plug-and-play capability which can reduce installation and labor costs because the cable preparation and installation are completed outside of the closure body. Also, the built-in cable entry system allows the technician to add and remove cables from the closure without breaking the cable seals. The FDC 08S is Rural Development (RUS) Listed.

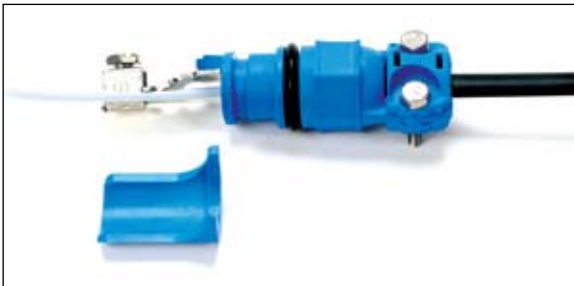
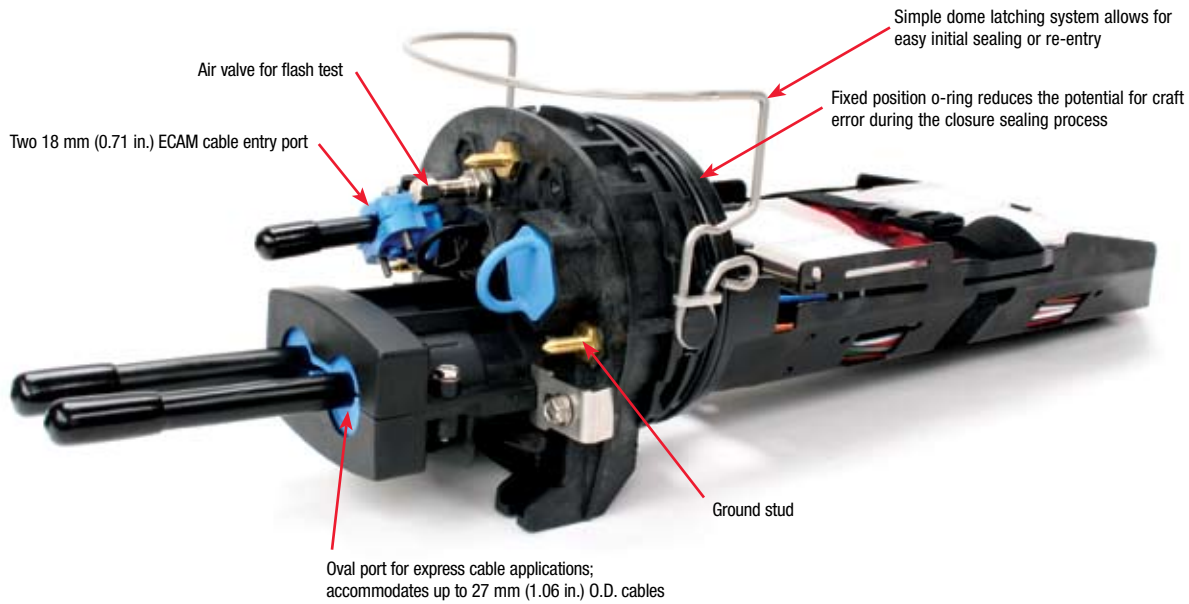


3M™ Fiber Dome Closure FDC 08S

Features	Benefits
Compact size	Fits into small pedestals and handholes
Constructed of highly chemical-resistant material	Can be deployed in all environments: buried, underground, and aerial
ECAM port design with true plug-and-play capability	Helps reduce installation and labor cost: cable preparation and installation is completed outside of the closure
Built-in cable entry termination system	Permits re-entry into the closure without breaking the cable seals
No special tools required	Simple installation and re-entry
Fixed o-ring seal	Easy, error-free closure sealing and re-entry
Innovative latching mechanism	Simple re-entry into closure by lifting the dome lid away from the base



3M™ Fiber Dome Closure FDC 08S



3M™ External Cable Assembly Module Cable Entry Port 12 mm



3M™ External Cable Assembly Module Cable Entry Port 18 mm

Specifications

	3M Fiber Dome FDC 08S-B	3M Fiber Dome FDC 08S-A
Dimensions (L x H x W) mm (in.)	521 x 178 x 137 (20.5 x 7.0 x 5.4)	521 x 178 x 137 (20.5 x 7.0 x 5.4)
Cable Entry Ports & Cable Size	Round ports: 3 1: 4 - 12 mm (0.15 - 0.47 in.) O.D. 2: 5 - 18 mm (0.20 - 0.71 in.) O.D. Oval ports: 1 for 2 express cables 6.5 - 27 mm (0.26 - 1.06 in.) O.D.	Round ports: 8 Round Cable 4 - 12 mm (0.15 - 0.47 in.) O.D. Flat Cable 8.5 x 4.3 mm (0.33 x 0.17 in.) Oval ports: 1 for 2 express cables 8 - 20 mm (0.31 - 0.79 in.) O.D.
Grounding	No. of feed-thru ground studs: 0, 3 or 5 Additional grounding hardware to be purchased separately	No. of feed-thru ground studs: 0 or 1 Additional grounding hardware to be purchased separately
Flash Test	5.8 PSI max	5.8 PSI max



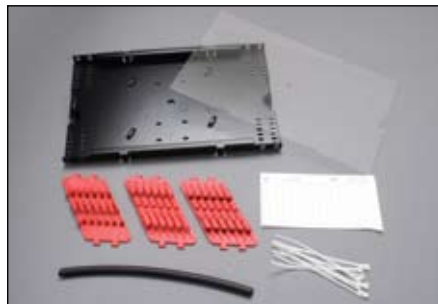
3M™ Fiber Dome Closure FDC 08S-B port layout



3M™ Fiber Dome Closure FDC 08S-A port layout

3M™ Fiber Dome Closure FDC 08S Splice Capacity

Product Number	Product Description	Splices Accommodated	Splice Capacity per Tray	FDC 08S-B		FDC 08S-A	
				Max no. of Trays	Max Splice Capacity	Max no. of Trays	Max Splice Capacity
2538-24-DF/72-MF	Stackable tray, fiber entry/exit at any corner of the tray	Single fusion (45 or 60 mm)	24	4	96	4	96
		Single mechanical (3M™ Fibrlok™ Splice)*	12	4	48	4	48
		Mass fusion	72	4	288	4	288
2539-12-DF	Hinged	Single fusion (45 or 60 mm)	12	8	96	8	96
2540-12-DF/36-MF	Hinged	Single fusion (45 or 60 mm)	12	4	48	4	48
		Single mechanical (3M™ Fibrlok™ Splice)*	6	4	24	4	24
		Mass fusion	36	4	144	4	144



3M™ Fiber Optic Splice Tray 2538



3M™ Fiber Optic Splice Tray 2539



3M™ Fiber Optic Splice Tray 2540

Ordering Information

Product Number	Product Description	Stock Number	Minimum Order
FDC 08S-A-X0-X-01A-A	Fiber dome closure with one 20 mm double cable port, eight 12 mm ECAM ports, one 2538 tray, 1 ground stud	80-6113-2639-0	1
FDC 08S-B-01-X-01A-C	Fiber dome closure with one 27 mm double cable port, two 18 mm and one 12 mm ECAM cable ports, two 18 mm blank plugs, one 12 mm ECAM cable entry port kit, one 2538 tray, 3 ground studs	80-6113-1694-6	1
FDC 08S-B-01-X-02B-C	Fiber dome closure with one 27 mm double cable port, two 18 mm and one 12 mm ECAM cable ports, two 18 mm blank plugs, one 12 mm ECAM cable entry port kit, two 2539 trays, 3 ground studs	80-6113-1695-3	1
FDC 08S-C-00-2-01A-C	Fiber dome closure with four 18 mm and one 12 mm ECAM cable ports, two 18 mm ECAM cable entry port kits, one 12 mm ECAM cable entry port kit, one 2538 tray, 3 ground studs	80-6113-2205-0	1

3M™ Fiber Dome Closure FDC 08S

Fiber Dome Closure Accessories

Product Number	Product Description	Stock Number	Minimum Order
2538-24-DF/72-MF	Fiber Splice Organizer 2538, 24 Discrete or 72 Mass Fusion Splices, Stackable	80-6113-1714-2	2
2539-12-DF	Fiber Splice Organizer 2539, 12 Discrete Fusion Splices, Hinged	80-6113-1715-9	2
2540-12-DF/36-MF	Fiber Splice Organizer 2540, 12 Discrete Fusion or 36 Mass Fusion Splices, Hinged	80-6113-1716-7	2
ECAM-12mm	12mm ECAM Cable Entry Port	80-6130-1696-1	4
ECAM-20mm-D	20mm Double ECAM Cable Entry Port	80-6113-1697-9	1
ECAM-27mm-D	27mm Double ECAM Cable Entry Port	80-6113-1698-7	1
ECAM-18mm	18mm ECAM Cable Entry Port	80-6113-1699-5	2
ECAM-GND-6-AWG	ECAM (18mm, 20mm, 27mm) Cable Ground (6 AWG)	80-6113-1702-7	2
ECAM-GND-14-AWG	ECAM Cable Ground (14 AWG)	80-6113-1704-3	2
FD 08-HH-1730	FD 08 Handhole Mounting Bracket for 17"x30" Channell & Strongwell	80-6113-1706-8	2
FDT 08-PED-CH	FD 08 Pedestal Mounting Bracket for 10" Channell Pedestal	80-6113-1720-9	2
FDT 08-PED-CI	FD 08 Pedestal Mounting Bracket for Charles Industries 8" Pedestal	80-6113-1721-7	2
FD 08-Aerial-SHB	FD 08 Aerial Stand Mount Hanger Bracket	80-6113-1707-6	2

3M and Fibrok are trademarks of 3M. All other trademarks used herein are the property of their respective owners.

Important Notice

All statements, technical information, and recommendations related to 3M's products are based on information believed to be reliable, but the accuracy or completeness is not guaranteed. Before using this product, you must evaluate it and determine if it is suitable for your intended application. You assume all risks and liability associated with such use. Any statements related to the product which are not contained in 3M's current publications, or any contrary statements contained on your purchase order shall have no force or effect unless expressly agreed upon, in writing, by an authorized officer of 3M.

Warranty; Limited Remedy; Limited Liability.

This product will be free from defects in material and manufacture for a period of 12 months from the time of purchase. **3M MAKES NO OTHER WARRANTIES INCLUDING, BUT NOT LIMITED TO, ANY IMPLIED WARRANTY OF MERCHANTABILITY OR FITNESS FOR A PARTICULAR PURPOSE.** If this product is defective within the warranty period stated above, your exclusive remedy shall be, at 3M's option, to replace or repair the 3M product or refund the purchase price of the 3M product. **Except where prohibited by law, 3M will not be liable for any loss or damage arising from this 3M product, whether indirect, special, incidental or consequential regardless of the legal theory asserted.**



Communication Markets Division 3M Telecommunications

6801 River Place Blvd.
Austin, TX 78726-9000
800/426 8688
Fax 800/626 0329
www.3MTelecommunications.com

Please recycle. Printed in USA.
© 3M 2008. All rights reserved.
80-6113-1550-0